

How To Configure Bit Defender To Allow Trusted QSL.  
Courtesy of Walt Flesher, W6SA

From the Bit Defender screen, GO TO:

Shield

Advanced Settings

AVC should be enabled by default. If you turn it off you don't need to enter exclusions

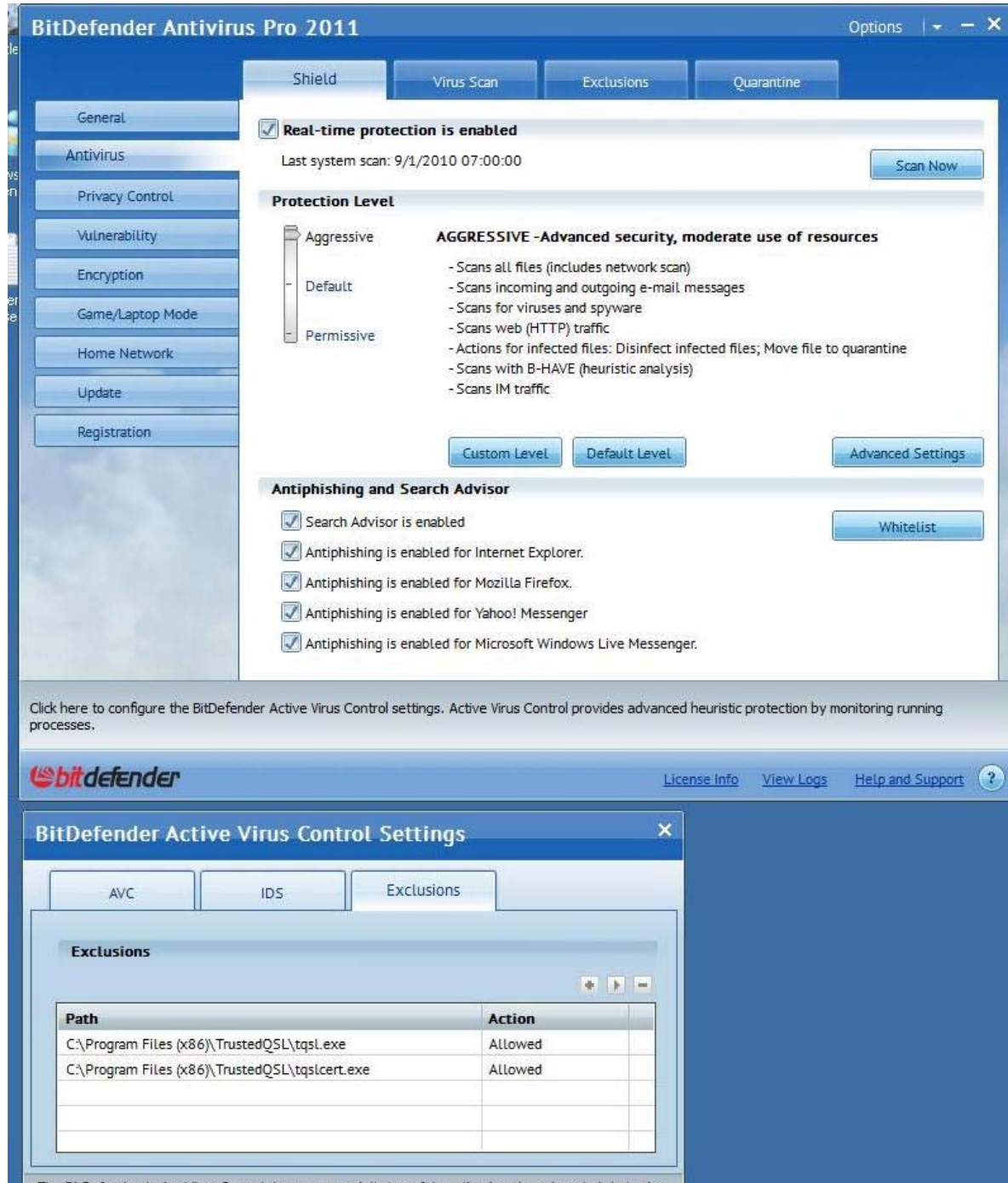
Exclusion Tab

Click on + sign

Add TQSL.EXE

Add TQSLCERT.EXE

Click OK and you should be able to open the TQSL programs without receiving an error message.



The BitDefender Active Virus Control detects potentially harmful applications based on their behavior.