



# ARRL Phone Sweepstakes

## 2013 Results

By Steve London, N2IC

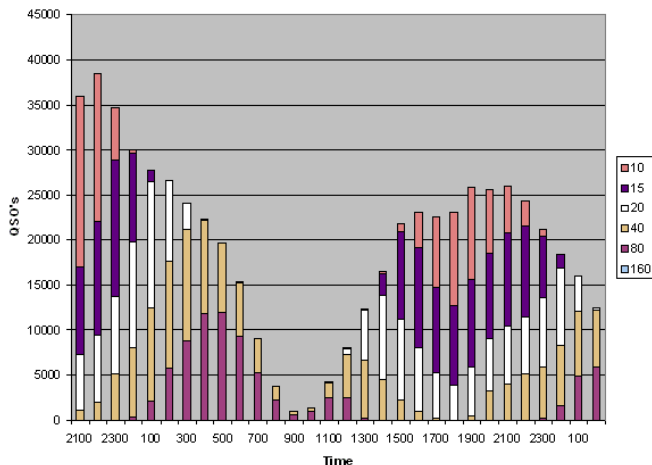


PRINCIPAL AWARDS SPONSOR

### Equipment and Endurance

Just when we were all settling into the idea that the new Maunder Minimum was nearly upon us, 'Ol Sol awakened from his slumber just in time for the 2013/2014 winter contest season! The 2013 Phone Sweepstakes was a major beneficiary of the reawakening, with great conditions and long openings on all of the high bands well into the evening hours. There was an unseasonably severe weather outbreak in the Midwest and the lower bands, even up through 20 meters, were filled with static crashes part of the time.

QSO's per hour



As you can see, 10 meters played a big part in this year's contest, especially at the start. This is a good chart to use when planning your off time!

This year, 1750 logs were submitted, compared to 1673 logs in 2012. The two Single-Operator Unlimited categories (High Power and Low Power) accounted for most of the increase in participants. Over 591,000 QSOs were reported, a 2.8% increase over 2012. 15, 20 and 40 meters shared almost equal numbers of contacts (approximately 141,000), while 10 meters had slightly more contacts than 80 meters (91,000 vs. 77,000).

#### Entries by Category

| Category | Clean Sweeps | Total Entries |
|----------|--------------|---------------|
| SOQRP    | 1            | 74            |
| SOLP     | 42           | 771           |
| SOHP     | 60           | 259           |
| MH       | 41           | 72            |
| ML       | 14           | 73            |
| UH       | 104          | 312           |
| UL       | 31           | 165           |
| S        | 3            | 24            |

This was the third year for entries in the Single-Op Unlimited, Low Power and Multioperator, Low Power categories. The

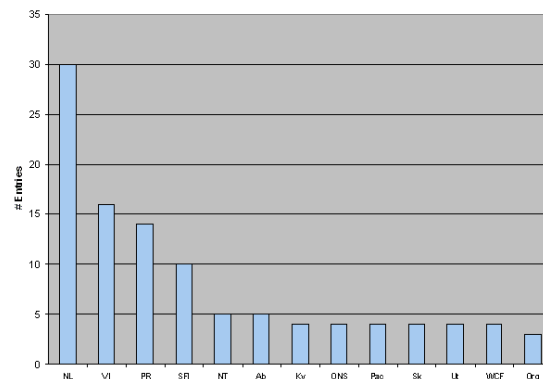
popularity of these categories continues to increase, with many old records continuing to be broken. However the number of new records in other categories has dropped, as the bar gets raised higher and higher each year. This year, there were "only" 94 new section records and 28 new division records! (A complete list of new records can be found at the end of this article.)

### The Clean Sweep

296 participants made the grade by working at least one station in each of the 83 ARRL/RAC sections. N6RNO, N6YEU, KK4GV, N4PSE and others made their first-ever sweeps. For N4PSE it took 50 years of operating — congratulations! The number of Clean Sweeps was down slightly compared to 329 last year.

142 more operators came so close to a Clean Sweep, missing by just one section. Last year, 104 participants were similarly disappointed. Unlike last year, Ontario East (ONE) was easy. Over 3100 QSOs with ONE were made and almost no one could blame ONE for costing them the sweep. It turns out that this year's prime nemesis was Newfoundland-Labrador, which accounted for 30 participants missing a Clean Sweep. The next two were the perennial sweep-breakers, Virgin Islands (16 missed sweeps) and Puerto Rico (10 missed sweeps). The #4 trouble maker was...South Florida! Yes, 10 participants lost out on a Clean Sweep by not working South Florida. For those of you still wondering "where were these sections?" they were all well represented. Many thanks to VO1KVT, VO1BQ, WP2Z, KH2RU/KP4, KP4/N6VUY, NP4Z, NP4G and WP3GW. Special thanks also to Northwest Territories stalwarts VY1EI, VE8GER and VE8EV. Many commented about how easy the Northwest Territories was this year.

82 Multipliers - Missed Sections



This chart gives the breakdown of what sections were missed by how many of the stations who worked 82 sections.

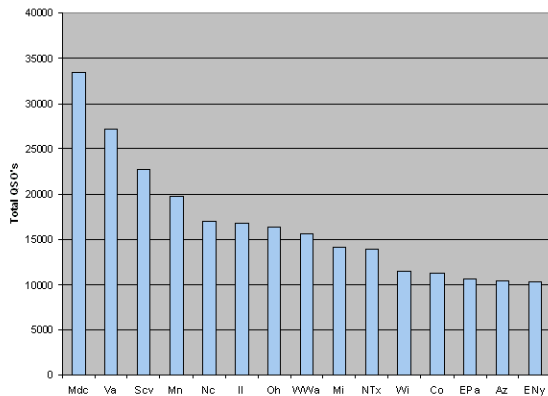
Who was the first to earn a Clean Sweep this year? That honor goes to team KG5VK, who made the sweep in the Multioperator, High Power category at 0318Z. Their last section? Puerto Rico. 10 minutes later, team NX6T completed the sweep by working Delaware. The first single-operator entry to make the Clean Sweep was KUØG at 0421Z, working Puerto Rico. Jim did it operating low power and without spotting assistance — a great accomplishment!

### First Twenty Clean Sweeps

| Station | Time | Last Section | Station | Time | Last Section |
|---------|------|--------------|---------|------|--------------|
| KG5VK   | 0318 | PR           | N1RR    | 1245 | NL           |
| NX6T    | 0328 | DE           | N3BUO   | 1316 | PR           |
| NØMA    | 0337 | NE           | K5RT    | 1347 | PR           |
| KUØG    | 0421 | PR           | KØGND   | 1350 | NL           |
| WØNO    | 0457 | ND           | N1LN    | 1351 | PR           |
| K6LL    | 0607 | UT           | W4MR    | 1354 | PR           |
| AA9A    | 0655 | ONN          | WB1GQR  | 1359 | PR           |
| K1KD    | 0755 | PAC          | N5ZC    | 1401 | PR           |
| W6DR    | 0836 | WCF          | N4GU    | 1407 | PR           |
| K4XS    | 1106 | VI           | W3LL    | 1409 | NL           |

There were only 10 Clean Sweeps through Saturday night. All other stations had to wait until at least Sunday morning when VO1KVT came on at 1233Z (for his first contest QSOs) and several Puerto Rican stations returned from their sleep breaks during the 13Z hour.

Most-Worked Sections



Where was the Sweepstakes action? This chart shows the 15 sections that appeared in the most logs. We hope you didn't miss one of these! The following table shows the number of QSOs with each section.

|     |       |     |      |     |      |     |      |
|-----|-------|-----|------|-----|------|-----|------|
| Mdc | 33541 | Ga  | 9000 | Ar  | 4943 | Sd  | 3422 |
| Va  | 27322 | Tn  | 8689 | Lax | 4930 | Wcf | 3316 |
| Scv | 22753 | Nh  | 8452 | Bc  | 4819 | Sb  | 3190 |
| Mn  | 19788 | Al  | 8359 | NLi | 4680 | Ms  | 3152 |
| Nc  | 17018 | NFl | 8282 | WTx | 4588 | De  | 3145 |
| Il  | 16829 | Or  | 8000 | Mt  | 4524 | One | 3129 |
| Oh  | 16404 | WNy | 7623 | Ok  | 4449 | Ons | 3033 |
| WWa | 15689 | Sjv | 7528 | Nv  | 4427 | Ri  | 3022 |
| Mi  | 14130 | Ks  | 7523 | SNj | 4281 | Qc  | 3004 |
| NTx | 13939 | NNj | 7451 | Sc  | 4258 | Nd  | 2869 |
| Wi  | 11555 | EMa | 7284 | Wy  | 4166 | NNy | 2695 |
| Co  | 11357 | la  | 7022 | Mar | 4148 | Gta | 2593 |
| EPa | 10752 | Nm  | 6775 | Ky  | 4048 | Pac | 2370 |
| Az  | 10475 | WMa | 6761 | Ne  | 3882 | Ab  | 2076 |
| ENy | 10365 | La  | 5784 | Id  | 3870 | Onn | 2032 |

|     |       |     |      |     |      |    |      |
|-----|-------|-----|------|-----|------|----|------|
| STx | 10208 | WPa | 5167 | SFI | 3800 | Nt | 2025 |
| Sv  | 10137 | Org | 5136 | Me  | 3752 | Sk | 1982 |
| In  | 9945  | Sf  | 5134 | Ut  | 3707 | Vi | 1380 |
| Mo  | 9380  | Sdg | 5031 | Vt  | 3674 | Pr | 1117 |
| Ct  | 9326  | Ak  | 4994 | Mb  | 3578 | NI | 815  |
| Eb  | 9309  | Wv  | 4948 | EWa | 3477 |    |      |

### Close Races

Every year there are a number of very close section races and even the top spots in overall category winners are decided by a fraction of a percent. The following tables list examples of exceptional accuracy and the accuracy of stations that made their category's Top Ten. When the race is close, accuracy often makes the difference!

### Accuracy Honor Roll

| Call             | QSOs | Category | Error Rate (%) |
|------------------|------|----------|----------------|
| NW2K             | 478  | ML       | 0.2            |
| KD5LNO           | 710  | SOLP     | 0.4            |
| K2NNY (K2DB, op) | 549  | UL       | 0.5            |
| N4ZZ             | 400  | UH       | 0.5            |
| K4EU             | 500  | SOHP     | 0.6            |
| N2Y              | 480  | MH       | 0.6            |
| KØFVF (KØTI, op) | 977  | UL       | 0.7            |
| K4IVF            | 570  | SOHP     | 0.7            |
| KD4D             | 1651 | SOHP     | 0.7            |
| KU4A             | 456  | SOLP     | 0.7            |
| N6YEU            | 424  | SOLP     | 0.7            |
| NWØM             | 849  | UH       | 0.7            |
| W3WC             | 440  | UH       | 0.7            |
| W9RM             | 543  | SOLP     | 0.7            |
| WX3B             | 419  | MH       | 0.7            |
| AE1P             | 868  | SOLP     | 0.8            |
| KV7N             | 632  | UH       | 0.8            |
| W4FT             | 498  | SOLP     | 0.8            |
| WA8ZBT           | 592  | A        | 0.8            |
| K1JB             | 665  | SOHP     | 0.9            |
| K3TN             | 455  | UH       | 0.9            |
| N2IC             | 1173 | SOHP     | 0.9            |
| NC1I (K9PW, op)  | 1866 | SOHP     | 0.9            |
| NW6P             | 864  | SOHP     | 0.9            |
| W6YX             | 1405 | S        | 0.9            |
| W7WA             | 2123 | SOHP     | 0.9            |

### Error Rates by Category – Stations Making Over 100 QSOs

| Category                                       | Average | Best | Worst |
|--|---------|------|-------|
| Single-Op, High Power (Top Ten only)           | 4.1     | 0.0  | 14.8  |
| Single-Op, Low Power (Top Ten only)            | 1.9     | 0.9  | 3.1   |
| Single-Op, QRP (Top Ten only)                  | 4.6     | 0.0  | 91.0  |
| Single-Op Unlimited, High Power (Top Ten only) | 2.1     | 1.1  | 4.4   |
| Single-Op Unlimited, Low Power (Top Ten only)  | 3.7     | 0.0  | 15.5  |
| Multioperator, High Power (Top Ten only)       | 2.3     | 1.0  | 4.9   |
| Multioperator, Low Power (Top Ten only)        | 3.7     | 0.0  | 22.0  |
| School Club (Top Ten only)                     | 1.8     | 1.1  | 2.3   |
| Single-Op Unlimited, High Power (Top Ten only) | 3.4     | 0.4  | 12.8  |
| Single-Op Unlimited, Low Power (Top Ten only)  | 2.0     | 0.7  | 3.2   |
| Multioperator, High Power (Top Ten only)       | 4.3     | 0.6  | 15.9  |
| Multioperator, Low Power (Top Ten only)        | 4.3     | 1.6  | 11.8  |
| Single-Op Unlimited, High Power (Top Ten only) | 4.8     | 0.0  | 23.8  |
| Single-Op Unlimited, Low Power (Top Ten only)  | 2.8     | 1.4  | 4.4   |
| School Club (Top Ten only)                     | 4.8     | 0.9  | 13.8  |
| Single-Op Unlimited, High Power (Top Ten only) | 4.2     | 0.9  | 7.7   |

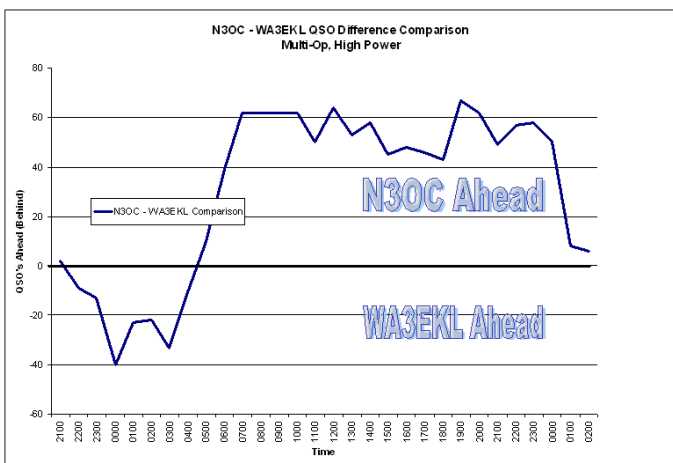
In the section-level close races, some are completely accidental — the two participants didn't even know they were competing in the same category, while others were clearly rivalries extending back many years.

### Close Races

| Winner | Runner-Up | Section | Category | Margin of Victory (#QSOs) |
|--------|-----------|---------|----------|---------------------------|
| VA3SWG | VE3TW     | GTA     | SOLP     | 48                        |
| N1ALO  | KC1SQ     | EMA     | SOLP     | 1                         |
| K7GM   | W1WEF     | CT      | SOHP     | 29                        |
| WA6URY | N7KFL     | LAX     | SOHP     | 1                         |
| NX9T   | WM2Z      | NC      | SOHP     | 4                         |
| K5TR   | NR5M      | STX     | SOHP     | 35                        |
| K6CDJ  | NM6G      | SJV     | UH       | 9                         |
| W4MYA  | W4NF      | VA      | UH       | 8                         |
| N3OC   | WA3EKL    | MDC     | MH       | 7                         |

This year, there were two section races decided by a single QSO. In the Eastern Massachusetts, Single-Op, Low Power category, after log checking Peter, N1ALO, barely escaped with a victory over Todd, KC1SQ. In the Los Angeles, Single-Op, High Power category, Dan, WA6URY, edged out Dave, N7KFL. Neither Dan nor Dave operated for more than 11 out of the possible 24 hours, so there was plenty of opportunity for either of them to have taken a commanding lead or for another LAX station to have beaten either of them.

Another very close section race was in the North Carolina, Single-Op, High Power category. Jeff, NX9T, finished with a four QSO lead over Warren, WM2Z. This was another case where either operator could have put in many more hours of operating.



A full 24 hours was put in by the N3OC and WA3EKL Multioperator, High Power teams in Maryland. (See the hour-by-hour comparison chart above.) When the dust settled, team N3OC won by a mere seven QSOs. The WA3EKL team got off to an early lead, but by mid-evening N3OC overtook them and almost never looked back. However, the spread tightened up in the last few hours, as N3OC ran out of operating time at 0029Z, a full 2-½ hours before the end of the contest.

## Single-Op, High Power (SOHP or B)

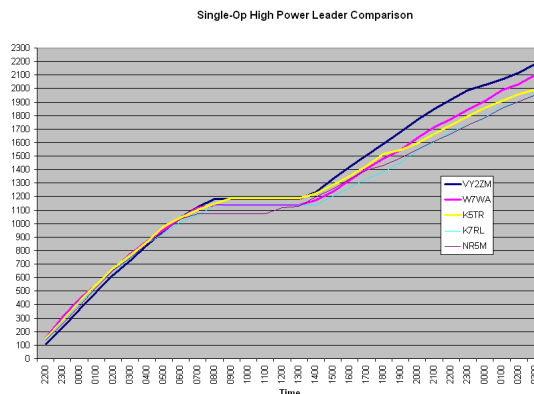
The rivalry of the South Texas, Single-Op, High Power George's continued in 2013, with each of them putting in a 24-hour, maximum effort. This year it was George, K5TR, over George, NR5M, by 35 QSOs. K5TR placed 3rd nationally, while NR5M placed 5th nationally.

### Top Ten - Single Operator, High Power

|       |         |
|-------|---------|
| VY2ZM | 361,880 |
| W7WA  | 348,600 |
| K5TR  | 330,174 |
| K7RL  | 325,028 |
| NR5M  | 324,364 |
| K6NA  | 308,760 |
| NC1I  | 298,966 |
| WC6H  | 284,026 |
| K4JPD | 280,872 |
| KW8N  | 278,714 |

Almost the same big dogs battled it out again this year for the top slots in the Single-Op, High Power category. The top five competitors in 2013 were all in the top six in 2012 (only WP2Z, last year's #3, is missing this year). The chart below illustrates the back-and-forth hour-by-hour comparison of the top five scorers.

For the 2nd consecutive year and the third time in the past four years, Jeff, K1ZM, piloted his VY2ZM Prince Edward Island station to a solid victory. Jeff has a proven formula for the Canadian Maritime provinces — start on 20 meters, spend the evening on 40 meters, take 5 ½ hours off, 20 meters in the morning, 10 and 15 meters in the afternoon, 20 meters in the evening, and finish the contest on 40 meters.



Dan, W7WA, repeated his 2nd place finish, 80 QSOs back from Jeff. George, K5TR, moved up to 3rd place, over his South Texas rival NR5M, in 5th place. Mitch, K7RL, moved up to 4th place, 31 QSOs behind K5TR, and 4 QSOs ahead of NR5M. Craig, N6ED, operating from K6NA, jumped from 13th to 6th place. Pete, K9PW, put the East Coast into the Top Ten as NC1I, cruising Western Massachusetts into 7th place. Perennial Top Ten placer Rich, WC6H, placed 8th. Brian, N4OO, changed stations this year for his first Top Ten finish at #9. Bob, KW8N, rounded out the Top Ten.

W7WA got off to a great start with a 22-QSO lead over the competition after 3 hours. Meanwhile, on the other side of the continent, VY2ZM struggled during the same time period, falling 81 QSOs behind. The nighttime hours provided the great equalizer, however. By 0600Z, there was only a 49 QSO difference between #1 and #5, with the lead being held by K5TR. NR5M started his time off earlier than the rest of the pack at 0635Z and returned to the airwaves earlier than the others at 1108Z. This may have turned out to be a questionable strategy.

At 1400Z, when the other four stations were just getting ready to begin daytime operation, K5TR still held the lead by a scant three QSOs over Jeff, VY2ZM. After that, it was off to the races for Jeff, and by 1600Z he never needed to look in the rear-view mirror. At 2000Z, Dan, W7WA, had caught up and tied K5TR for 2nd place. After that, the order of the top three was established – VY2ZM, W7WA, K5TR. 4th and 5th places seemed to change every hour, with K7RL and NR5M staying neck-and-neck and K7RL eventually besting NR5M by four QSOs.

### Single-Op, Low Power (SOLP or A)

The Single-Op, Low Power category continues to be the most popular category for SS participants with 771 submitted logs. In 2013, the Single-Op, Low Power Top Ten had competitors from the northwest, southeast, southwest and central areas of the continent.

#### Top Ten - Single Operator, Low Power

|       |         |
|-------|---------|
| K2PO  | 258,794 |
| N4PN  | 246,178 |
| W4LT  | 241,572 |
| KUØG  | 213,808 |
| NA4K  | 204,180 |
| WD5K  | 181,106 |
| K9WZB | 180,442 |
| K9MU  | 177,952 |
| W4IX  | 172,142 |
| KØCN  | 167,772 |

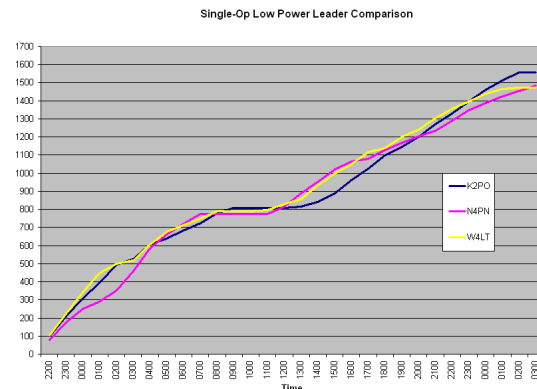
Competing seriously in his first Sweepstakes in 35 years, Bill, K2PO, operating from Oregon, was the winner! Bill won in convincing style, with a 76-QSO margin.

Phone Sweepstakes veteran Paul, N4PN moved back into the low power category this year, moving up to 2nd place. Another southeast USA competitor, Lu, W4LT, improved his standing from 7th to 3rd place in 2013.



Winner of the SOLP category, Bill, K2PO, characterizes his impressive set of antennas as a "single tower full of aluminum". (Photo from K2PO)

The following figure shows the hour-by-hour standing of these top three scorers. W4LT got off to a fast start, building up a 56 QSO lead at 0200Z. But just two hours later his lead had evaporated as Bill continued a good run on 20 meters while Lu struggled on the low bands. During the same period, Paul was making his move with a great five hour run on 40 and 80 meters. By 0900Z we had a virtual dead heat between these three top scorers.



The early morning hours belonged to the southeast stations, Lu and Paul, while Bill waited for the Sun to peek over the horizon. At 1700Z, Bill was 90 QSOs behind Lu and 103 QSOs behind Paul. Then it was Bill's turn to turn up the heat. Aided by a great 15 meter run, Bill crawled his way back into the pack, finally overtaking the competition at 2200Z. From there, it looked like the finish order was set – K2PO, W4LT, and N4PN. But...uh oh, Lu used up his 24 hours at 0120Z while Paul continued for another 85 minutes, overtaking Lu at the end!

The next two scores came from the central USA. Jim, KUØG, came in 4th with a personal-best-ever score and new section record. Steve, NA4K, did a great job from Kentucky, taking 5th place.

## Single-Op, QRP (SOQRP or Q)

It was a tough year to do QRP in Phone Sweepstakes with only 74 entries and the top scores were generally down slightly compared to 2012.

### Top Ten - Single Operator, QRP

|        |        |
|--------|--------|
| NN7SS  | 95,120 |
| NDØC   | 81,344 |
| NK8Q   | 79,704 |
| KØZL   | 70,684 |
| K3TW   | 68,060 |
| N9NE   | 67,200 |
| KT8K   | 64,960 |
| KJ5RM  | 63,200 |
| WA7PVE | 49,140 |
| N5EE   | 46,488 |

Congratulations to Mark, K6UFO, operating from NN7SS near Seattle, on his victory with 580 QSOs. Mark swept both weekends of SOQRP this year, an accomplishment that is rare in any category at any power level! Randy, NDØC moved up from #4 last year to #2, using modest antennas in Minnesota. Mark, NK8Q, also improved his standing this year to #3 from #5 in 2012.

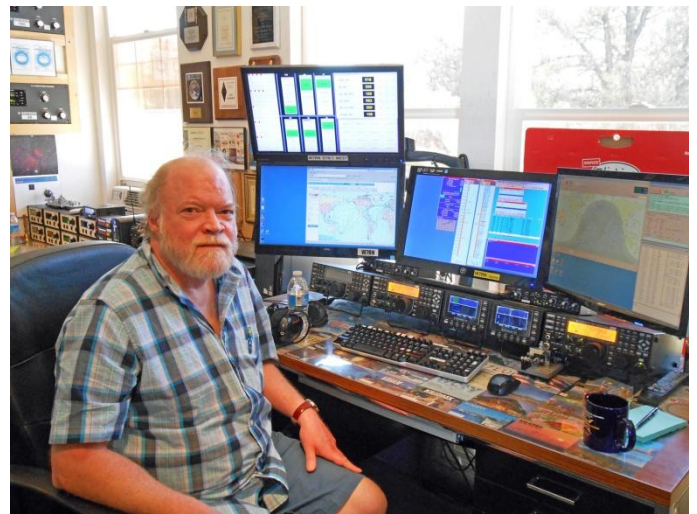
Only 32 QSOs separated the next 5 slots. Dan, KØZL, placed 4th, lamenting missing only Kentucky for the Clean Sweep. Tom, K3TW, tried his hand at QRP this year, with a very respectably 5th place showing from North Florida and the only new section record in SOQRP. The next three positions were earned by Todd, N9NE; Tim, KT8K; and Jory, KJ5RM. Congratulations!

## Single-Op Unlimited, High Power (SOUHP or UH)

With 312 entries, SOUHP has become the second most popular category. In the battle of David vs. Goliath, Goliath has again come out on top. Congratulations to Bill, K4XS, on his solid victory, putting his commanding 40 meter signal to good use at night and his 20 and 15 meter arrays to work during the day. In 2nd place, on the other end of the antenna spectrum was Dave, K6LL. Dave's postage-stamp lot and modest antennas in Yuma, Arizona continue to amaze, year-after-year.

### Top Ten - Single Operator Unlimited, High Power

|              |         |
|--------------|---------|
| K4XS         | 336,316 |
| K6LL         | 312,578 |
| W7RN         | 294,816 |
| WE9V         | 292,658 |
| K5RT         | 282,532 |
| WB1GQR       | 281,038 |
| W4MR         | 276,722 |
| W1SRD        | 273,900 |
| K1KD         | 271,576 |
| NØXR (@NØNI) | 266,098 |



Making 271 QSOs more than last year, Matt, WX5S, piloted the W7RN station to 3rd place in SOUHP, compared to his 6th place finish in 2012. Great improvement, Matt! (Photo by K5RC)

Despite tornadic weather in the area, Ryan, KB9OWD, put in a great score from WE9V's Wisconsin station, taking 4th place just 13 QSOs behind W7RN. Ryan made the most of 20 meters during the daytime and 40 meters at night. Only nine QSOs separated the #5 and #6 positions. Congratulations to Paul, K5RT, and Mitch, W1SJ (operator of WB1GQR).

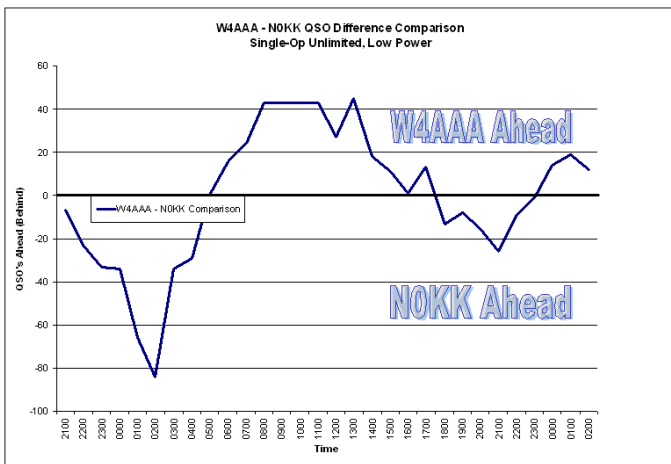
## Single-Op Unlimited, Low Power (SOULP or UL)

The Single-Op Unlimited, Low Power category continues to gain in popularity, with 165 participants in 2013 and 24 new section records.

### Top Ten - Single Operator Unlimited, Low Power

|               |         |
|---------------|---------|
| VE4GV         | 266,762 |
| W4AAA         | 247,008 |
| NØKK (@NØAT)  | 245,348 |
| VE6EX         | 226,424 |
| VE4EA         | 181,770 |
| KE3X (@N3HBX) | 178,284 |
| VY1EI         | 173,920 |
| KØUK          | 168,756 |
| WB4OMM        | 165,170 |
| KØFVF         | 159,360 |

Welcome back to Rob, VE4GV, who soundly won the category this year and set a new division record. Rob has been largely absent from contesting for the past decade — what a great way to return! Rob made no QSOs on 80 meters. As another former Phone SS champion used to say “If I'm going to 80 meters, I'm losing the contest.” Last year's winner, John, KK9A, operating as W4AAA came in 2nd with a new division record. Only 10 QSOs behind John was Kirk, NØKK, from Minnesota. Kirk also came in 3rd last year, but in the Single-Op, Low Power category with 102 fewer contacts. An hour-by-hour comparison of W4AAA and NØKK is shown in the figure below. Dan, VE6EX, also switched to the UL category this year, taking 4th place with 157 more QSOs.



continued operating for two more hours, taking the lead. During the morning hours WP2Z struggled on 10 meters while W0SD had excellent runs on 15 and 20 meters. At 1700Z, W0SD had a 214 QSO lead over WP2Z! After that, WP2Z crawled their way big into contention with consistently higher hourly rates, falling only 35 QSOs short at the closing bell.

From the other corner of North America, the KL7RA team of AL7IF and N6TR placed 3rd, setting a new section record. San Diego is always a competitive section for Sweepstakes. The NX6T team of N6KI, K6AM, N0DY, W2PWS, N6AN, and N6CY placed 4th. From Kansas, the W0NO team of W0NO, K0WA, and AB0S took the #5 slot. Setting a new division record, W1XX and K1XA made sure that New England was represented in the top scores.

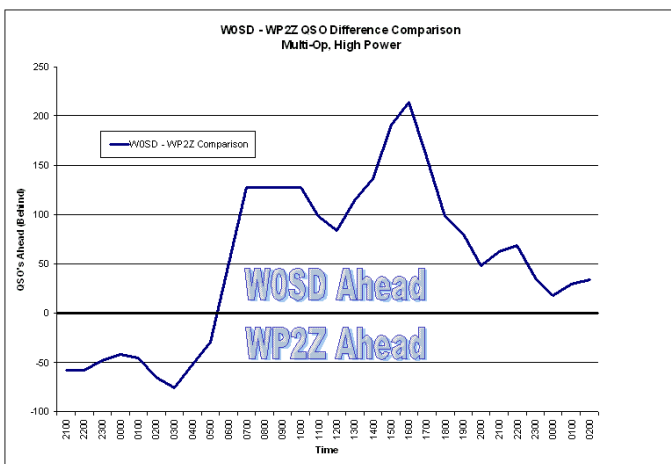
### Multioperator, High-Power (MH)

Many of the usual top-scoring, Multioperator, High Power category teams took the year off, leaving the slate clean for a new generation of winners.

#### Top Ten - Multioperator, High Power

|               |         |
|---------------|---------|
| W0SD          | 362,710 |
| WP2Z          | 356,900 |
| KL7RA         | 326,024 |
| NX6T          | 312,080 |
| W0NO          | 295,978 |
| W1XX          | 292,160 |
| K4OV          | 280,208 |
| N1RR (@K1TTT) | 267,260 |
| KG5VK         | 253,648 |
| N6BV          | 247,838 |

Finishing on top was the W0SD South Dakota team of W0SD, WD0T, W0DB and W0OE. They finished a solid 35 QSOs ahead of the Virgin Islands WP2Z team of K8MJZ and K9VV. W0SD split their QSOs almost evenly across 15, 20 and 40 meters while WP2Z put their emphasis on 10 and 20 meters. Both teams set new division records.



The figure above compares W0SD and WP2Z throughout the contest. WP2Z got off to a great start with 192 QSOs in the first hour. They held a substantial lead until 0600Z. At that point, WP2Z took a long time-off period while W0SD

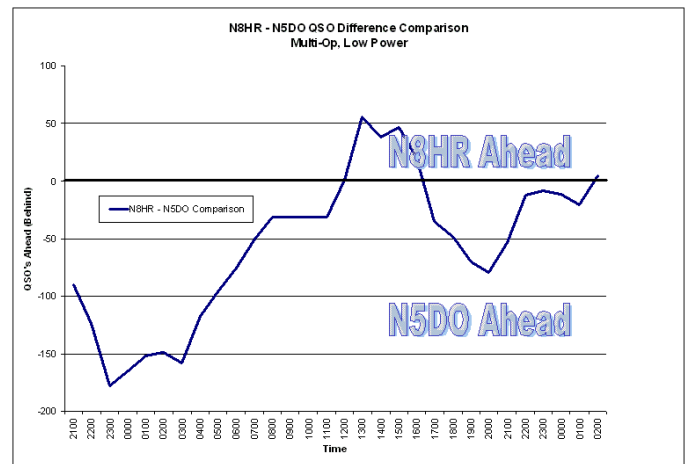
### Multioperator, Low-Power (ML)

The Multioperator Low-Power category increased in popularity. 73 entries were received — more entries than the Multioperator, High-Power category. 18 new section records were set in this category. Are you going to team-up next year and grab a record?

#### Top Ten - Multioperator, Low Power

|       |         |
|-------|---------|
| N8HR  | 194,054 |
| N5DO  | 193,556 |
| W2TZ  | 170,150 |
| K3AJ  | 151,724 |
| NA5NN | 136,784 |
| WR5O  | 130,216 |
| N0HJZ | 101,758 |
| KU7Y  | 92,628  |
| KF3N  | 86,920  |
| WN1G  | 86,154  |

In the closest race of any category, Ohio team N8HR, operated by WZ8P, WX8J, NY8P, KC8BEW, and KF8NZ, won by a mere three QSOs over West Texas team N5DO, operated by KE5OG and N5DO!



As you can see in the preceding figure, N5DO was ahead by 178 QSOs just three hours into the contest. Using an unusual time-off strategy, N8HR had waited to make their first QSO until 1-1/2 hours into the contest. Once 20 meters closed for

N5DO, however, N8HR made up ground each hour, mostly on 40 meters. By the time both teams took time off beginning around 0800Z, the two teams were in a virtual dead heat. During the daytime Sunday, it was a see-saw battle, with N8HR first piling on the 40 meter QSOs, then N5DO making hay on 15 and 10 meters. During four of the last five hours, N5DO held a slim lead. However, remember that N8HR started the contest late? That paid off in the final hour when N5DO had used up their 24 hours, but N8HR kept on running to victory on 80 meters. (I guess they weren't losing the contest on 80 meters! – Ed.)

Third place went to the Western New York team of W2TZ and K1PY, moving up from 6th place last year as W2TZ. K3AJ and AB3CV teamed up for 4th place as K3AJ. K2FF and W5UE activated NA5NN in Mississippi for 5th place.

## School Club (S)

24 schools competed in the School Club Category in 2013, the same as 2012.

### Top Ten - School Club

|       |         |
|-------|---------|
| KØHC  | 261,118 |
| W6YX  | 228,416 |
| W1AF  | 135,136 |
| K2CC  | 92,588  |
| KØKU  | 62,624  |
| W9JWC | 51,520  |
| W8SH  | 50,880  |
| W5YM  | 45,440  |
| W9YB  | 35,112  |
| K5LSU | 34,500  |

The perennial battle continued between Stanford University, W6YX, and Hesston College, KØHC. This year, the finish was reversed with KØHC earning a decisive victory with a margin of 197 QSOs. Both schools should be congratulated for their very low error rates.

Harvard University, W1AF, again placed 3rd. Clarkson College, K2CC, moved up from 8th to 4th. The University of Alabama, W4UAL, took 5th place, compared to 11th place in 2012. Great job!

Other schools making the Top Ten were Kansas University, KØKU; Bradley University, W9JWC; Michigan State University, W8SH; Worcester Polytechnic Institute, W1YK; and the University of Arkansas, W5YM.

## Club Competition

It was an excellent year for the Affiliated Club Competition in Sweepstakes as 1619 participants submitted CW and Phone SS scores towards a club aggregate total. This is an increase of 4% over last year. Not only did club activity increase for the established names in contest clubs but there were several unfamiliar names (a.k.a. “upstarts”) in the top club scores. We are all looking forward to 2014’s battles between the “legacy” and “upstart” clubs.

## Affiliated Club Competition

|                                      | Score      | Entries |
|--------------------------------------|------------|---------|
| <b>Unlimited Category</b>            |            |         |
| Potomac Valley Radio Club            | 22,928,140 | 317     |
| Northern California Contest Club     | 16,943,022 | 231     |
| Yankee Clipper Contest Club          | 6,609,240  | 95      |
| Minnesota Wireless Assn              | 6,332,718  | 102     |
| Society of Midwest Contesters        | 6,298,576  | 109     |
| <b>Medium Category</b>               |            |         |
| Frankford Radio Club                 | 3,978,336  | 48      |
| DFW Contest Group                    | 3,962,440  | 41      |
| Florida Contest Group                | 3,595,362  | 46      |
| Southern California Contest Club     | 3,333,360  | 33      |
| Contest Club Ontario                 | 3,139,888  | 47      |
| Arizona Outlaws Contest Club         | 3,085,306  | 37      |
| Mad River Radio Club                 | 2,815,932  | 34      |
| Western Washington DX Club           | 2,477,442  | 28      |
| Alabama Contest Group                | 2,449,138  | 37      |
| Tennessee Contest Group              | 2,176,518  | 28      |
| Central Texas DX and Contest Club    | 2,145,026  | 19      |
| Grand Mesa Contesters of Colorado    | 1,731,366  | 21      |
| Contest Club California Peninsula    | 1,558,112  | 16      |
| Georgia Contest Group                | 1,547,214  | 15      |
| Hudson Valley Contesters and DXers   | 1,345,904  | 18      |
| South East Contest Club              | 1,332,874  | 22      |
| CTRI Contest Group                   | 1,060,126  | 10      |
| Willamette Valley DX Club            | 1,019,884  | 19      |
| North Coast Contesters               | 1,015,294  | 11      |
| ORCA DX And Contest Club             | 955,248    | 11      |
| Maritime Contest Club                | 919,700    | 10      |
| Louisiana Contest Club               | 900,474    | 9       |
| Northern Rockies DX Association      | 856,262    | 6       |
| Utah DX Assn                         | 826,450    | 9       |
| North Texas Contest Club             | 755,734    | 8       |
| Rochester (NY) DX Assn               | 733,962    | 14      |
| Order of Boiled Owls of New York     | 479,868    | 7       |
| Alberta Clippers                     | 460,102    | 3       |
| Kentucky Contest Group               | 458,612    | 9       |
| Oklahoma DX Assn                     | 451,524    | 3       |
| Saskatchewan Contest Club            | 399,894    | 3       |
| Mississippi Valley DX/Contest Club   | 381,284    | 10      |
| Radio Club of Redmond                | 368,426    | 4       |
| Contest Group Du Quebec              | 365,028    | 9       |
| Carolina DX Association              | 344,736    | 9       |
| Allegheny Valley Radio Association   | 306,712    | 5       |
| South Jersey Radio Assn              | 268,024    | 7       |
| Motor City Radio Club                | 182,312    | 6       |
| Central Arizona DX Assn              | 70,800     | 4       |
| Woodbridge Wireless                  | 33,798     | 3       |
| <b>Local Category</b>                |            |         |
| Hoosier DX and Contest Club          | 1,207,742  | 10      |
| New Mexico Big River Contesters      | 990,534    | 8       |
| Iowa DX and Contest Club             | 887,000    | 6       |
| Lincoln ARC                          | 639,216    | 6       |
| Kansas City DX Club                  | 548,338    | 5       |
| Midland ARC                          | 527,216    | 3       |
| Spokane DX Association               | 469,610    | 9       |
| Bristol (TN) ARC                     | 452,824    | 9       |
| Kansas City Contest Club             | 448,138    | 7       |
| Delara Contest Team                  | 402,302    | 6       |
| 599 DX Association                   | 357,522    | 4       |
| Contoocook Valley Radio Club         | 265,704    | 4       |
| Trojan ARC                           | 246,014    | 3       |
| West Park Radiops                    | 202,252    | 10      |
| All Amateur Radio Club               | 185,588    | 4       |
| Hilltop Transmitting Assn            | 177,100    | 4       |
| Hazel Park ARC                       | 176,570    | 5       |
| Portage County Amateur Radio Service | 168,500    | 6       |
| OH-KY-IN ARS                         | 121,418    | 3       |
| Bergen ARA                           | 111,112    | 6       |
| Eastern Panhandle ARC                | 105,402    | 4       |
| Granite State ARA                    | 102,760    | 3       |
| Gloucester Co ARC                    | 102,332    | 3       |
| Alexandria Radio Club                | 97,068     | 4       |
| Panhandle ARC                        | 94,116     | 4       |
| Fort Smith Area ARC                  | 91,404     | 3       |
| St Louis ARC                         | 90,176     | 3       |
| Southern Berkshire ARC               | 80,554     | 9       |
| Metro DX Club                        | 74,558     | 4       |
| Stoned Monkey VHF ARC                | 74,406     | 4       |
| South Texas DX and Contest Club      | 67,094     | 3       |
| Milford (OH) ARC                     | 58,504     | 3       |
| Great South Bay ARC                  | 49,240     | 3       |
| 10-70 Repeater Assn                  | 43,124     | 5       |
| Great South Bay ARC                  | 49,240     | 3       |

*Version 1.2 corrects the score and final place of the Contest Club California Peninsula.*

In the Unlimited Club category, the Potomac Valley Radio Club (PVRC) again ran away with a big victory over the rival Northern California Contest Club (NCCC). The PVRC contributed a mammoth 317 entries for nearly 23 million points! The second place NCCC's 231 entries and nearly 17 million points is impressive in its own right! In the next three slots, the race was very close between the Yankee Clipper Contest Club, Minnesota Wireless Association and the Society of Midwest Contesters. Each of these clubs contributed over 6 million points, and had between 95 and 109 entries.

The Medium Club category featured the closest race imaginable. The (legacy) Frankford Radio Club (FRC) took the #1 spot over the (upstart) DFW Contest Group. Each club scored nearly 4 million points with a margin between these two clubs of only 15,898 points. That difference is only a single 100 QSO and 76 section log — congratulations to both of these groups!

Scores of the next four clubs in the race were also over 3 million points. None of the clubs contributed the maximum 50 entries allowed in the Medium Club category, meaning that with a few more competitive entries any of these clubs in the top six places could have conceivably won the category. This was a great job by the Florida Contest Group, Southern California Contest Club, Contest Club Ontario and Arizona Outlaws Contest Club.

In the Local Club category the New Mexico Big River Contesters, winner of the 2012 Local category, came in second to the Hoosier DX and Contest Club's first-place 10 entries. The Iowa DX and Contest Club was third with a strong challenge and the Lincoln ARC made a big jump from last year to come in fourth. Congratulations to them as well.

## Acknowledgments and See You in November!

This coming year, the starting whistle will sound for Phone Sweepstakes will kick off at 2100 UTC on November 15th. Will the Sun still be awake and tickling the ionosphere with the ultraviolet rays so beneficial to radio amateurs? Let's kick off the next 80 years of Sweepstakes and find out!

Many thanks to "Tree" Tyree, N6TR, for his hard work checking the logs, and George, K5TR, for logistical and infrastructure support.

## Clean Sweep Winners

|       |        |        |        |
|-------|--------|--------|--------|
| AA1UT | K9MU   | N5RZ   | W1QK   |
| AA6PW | K9PG   | N5ZC   | W1SRD  |
| AA9A  | K9RS   | N6BV   | W1WEF  |
| AB2DE | K9WZB  | N6DB   | W1WV   |
| AB2KX | K9YC   | N6JS   | W1XX   |
| AB2ZY | KA1O   | N6NF   | W2GPs  |
| AB4GG | KBØHH  | N6NZ   | W2LC   |
| AB5GG | KBØYH  | N6QQ   | W2TZ   |
| AD5XD | KB1NH  | N6RK   | W2VQ   |
| AE1P  | KB8UUZ | N6RNO  | W3CB   |
| AE6Y  | KC9QQ  | N6TU   | W3IDT  |
| AF1T  | KC9UJS | N6YEU  | W3LL   |
| AJ4A  | KD4D   | N7PI   | W3UL   |
| AL9A  | KD4SN  | N7TR   | W3WC   |
| KØAD  | KD5J   | N8BV   | W3ZGD  |
| KØBJ  | KD8CAO | N8HR   | W4AAA  |
| KØVVF | KE3X   | N8HTG  | W4FT   |
| KØGND | KE4KMG | N9KY   | W4IX   |
| KØHC  | KE9I   | N9SJ   | W4JAM  |
| K1BG  | KG5VK  | N9VI   | W4MPS  |
| K1ESE | KIØF   | NA4K   | W4MR   |
| K1KD  | KIØHA  | NA5NN  | W4MYA  |
| K1KP  | KJ9C   | NC1I   | W4MY   |
| K1RH  | KKØSD  | ND8L   | W4NF   |
| K1ZO  | KK4GV  | NF4A   | W4RM   |
| K1ZZI | KL7RA  | NH6Y   | W4TTY  |
| K2DFC | KS6A   | NM6G   | W4UAL  |
| K2NNY | KT4ZB  | NN2L   | W4UT   |
| K2PO  | KUØG   | NN3W   | W4WWQ  |
| K2UF  | KU7Y   | NN5V   | W5JJ   |
| K3AJ  | KV7N   | NP4G   | W6BO   |
| K3DNE | KW8N   | NR3X   | W6DR   |
| K3JD  | KZ1X   | NR5M   | W6EB   |
| K3KO  | NØFCD  | NS6T   | W6OAT  |
| K3MD  | NØHJZ  | NT5V   | W6PZ   |
| K3MIM | NØHR   | NT8V   | W6TK   |
| K3MM  | NØKK   | NU6S   | W6XU   |
| K3PU  | NØMA   | NWØM   | W6YX   |
| K3RA  | NØXR   | NW2K   | W7RN   |
| K3TN  | N1CC   | NW3H   | W7WA   |
| K3TW  | N1KWF  | NX1P   | W7ZRC  |
| K3UA  | N1LN   | NX6T   | W82A   |
| K3WW  | N1RR   | NX9T   | W9IU   |
| K3YDX | N1WR   | NY7N   | W9PA   |
| K3ZJ  | N2BJ   | VA2EN  | W9QL   |
| K3ZQ  | N2MM   | VA3SK  | W9ROG  |
| K4IVF | N2NC   | VA3SWG | WAØIZK |
| K4JC  | N2PN   | VA3ZV  | WA3EKL |
| K4JPD | N2QT   | VA7AAA | WA3HGW |
| K4OV  | N2SQW  | VA7ST  | WA5OYU |
| K4QE  | N2XQM  | VE2HIT | WA7LT  |
| K4QPL | N2YO   | VE3CX  | WBØN   |
| K4TD  | N2Y    | VE3KI  | WB1GQR |
| K4UB  | N3AFT  | VE3RZ  | WB4OMM |
| K4WI  | N3ALN  | VE3TW  | WB4YDL |
| K4XS  | N3BUO  | VE4EA  | WB8YYY |
| K5LAD | N3MK   | VE4GV  | WC6H   |
| K5LLA | N3OC   | VE4VT  | WD4IXD |
| K5MV  | N3QE   | VE5RI  | WD5K   |
| K5RT  | N3RC   | VE5SF  | WD8S   |
| K5TR  | N3RR   | VE6EX  | WE9V   |
| K5WA  | N3UA   | VE7CC  | WH7Z   |
| K6EU  | N3UM   | VE8EV  | WM2Z   |
| K6GT  | N3WD   | VE9AA  | WN1G   |
| K6LL  | N4FX   | VO1KVT | WO9S   |
| K6NA  | N4GU   | VY2TT  | WO9Z   |
| K6TU  | N4HXI  | VY2ZM  | WP2Z   |
| K6XX  | N4KH   | WØBM   | WT9U   |
| K7CF  | N4KIT  | WØNO   | WV1M   |
| K7RI  | N4PN   | WØSD   | WX6V   |
| K7RL  | N4PSE  | WØZF   | WY7SS  |
| K8AO  | N4VA   | W1AN   | WZ8T   |
| K8BL  | N5DO   | W1MA   |        |
| K9BGL | N5RN   | W1NG   |        |
| K9JM  |        |        |        |



**New Section and Division Records**

| Call             | Score   | Cat  | Sec | Division       | Div Rec? | Call            | Score   | Cat | Sec | Division     | Div Rec? |
|------------------|---------|------|-----|----------------|----------|-----------------|---------|-----|-----|--------------|----------|
| N4PN             | 246,178 | SOLP | GA  | Southeastern   |          | N1API           | 41,003  | UL  | CT  | New England  |          |
| VA3SWG           | 110,722 | SOLP | GTA | Canadian       |          | VE3HEU          | 4,992   | UL  | GTA | Canadian     |          |
| KUØG             | 213,808 | SOLP | MO  | Midwest        |          | W7ZRC           | 91,466  | UL  | ID  | Northwestern | Yes      |
| VA3TIC           | 55,200  | SOLP | ONE | Canadian       |          | KD4SN           | 73,372  | UL  | KY  | Great Lakes  |          |
| VE3RX            | 69,864  | SOLP | ONN | Canadian       |          | K6DSW           | 11,448  | UL  | LAX | Southwestern |          |
| K2PO             | 258,794 | SOLP | OR  | Northwestern   |          | VE9ACL          | 10,672  | UL  | MAR | Canadian     |          |
| N6ZFO            | 165,148 | SOLP | SF  | Pacific        |          | KE3X            | 178,284 | UL  | MDC | Atlantic     | Yes      |
| W4LT             | 194,720 | SOLP | WCF | Southeastern   |          | AA1UT           | 91,798  | UL  | ME  | New England  |          |
| VY2ZM            | 361,880 | SOHP | MAR | Canadian       | Yes      | K8KHZ           | 53,946  | UL  | MI  | Great Lakes  |          |
| VE3YT            | 53,040  | SOHP | ONS | Canadian       |          | NØKK            | 245,348 | UL  | MN  | Dakota       | Yes      |
| NC1I (K9PW op)   | 298,966 | SOHP | WMA | New England    | Yes      | W4AAA (KK9A op) | 247,008 | UL  | NC  | Roanoke      | Yes      |
| KL7RA            | 326,024 | MH   | AK  | Northwestern   |          | WBØDSF          | 2,862   | UL  | ND  | Dakota       |          |
| K3JD             | 154,380 | MH   | DE  | Atlantic       |          | WB4OMM          | 165,170 | UL  | NFL | Southeastern | Yes      |
| N6BV             | 247,838 | MH   | EB  | Pacific        |          | K1ZO            | 112,714 | UL  | NH  | New England  | Yes      |
| VA3ZV            | 121,346 | MH   | ONS | Canadian       |          | NY6DX           | 51,168  | UL  | NLI | Hudson       |          |
| W1XX             | 292,160 | MH   | RI  | New England    | Yes      | K2NNY (K2DB op) | 90,636  | UL  | NNY | Atlantic     |          |
| WØSD             | 362,710 | MH   | SD  | Dakota         | Yes      | VY1EI           | 173,920 | UL  | NT  | Canadian     |          |
| WP2Z             | 356,900 | MH   | VI  | Southeastern   | Yes      | VE3MGY          | 136,800 | UL  | ONS | Canadian     |          |
| N1RR             | 267,260 | MH   | WMA | New England    |          | KM4AF           | 544     | UL  | SC  | Roanoke      |          |
| WN1G             | 86,154  | ML   | AL  | Southeastern   | Yes      | K6GHA           | 83,640  | UL  | SCV | Pacific      |          |
| W6K              | 66,096  | ML   | EB  | Pacific        |          | N6EE            | 118,572 | UL  | SJV | Pacific      |          |
| N9VI             | 42,994  | ML   | IN  | Central        |          | KK5LO           | 41,148  | UL  | STX | West Gulf    |          |
| VE9OA            | 83,312  | ML   | MAR | Canadian       |          | N2QT            | 119,354 | UL  | VA  | Roanoke      |          |
| K3AJ             | 151,890 | ML   | MDC | Atlantic       |          | W4ZYT           | 5,070   | UL  | VT  | New England  |          |
| KB1UJS           | 18,178  | ML   | ME  | New England    |          | N2ESP           | 16,160  | UL  | WCF | Southeastern |          |
| NØHJZ            | 101,758 | ML   | MN  | Dakota         | Yes      | W9XT            | 49,410  | UL  | WI  | Central      |          |
| NA5NN            | 136,784 | ML   | MS  | Delta          | Yes      | WG7X            | 23,986  | UL  | WWA | Northwestern |          |
| WN7Y             | 15,894  | ML   | MT  | Northwestern   |          |                 |         |     |     |              |          |
| WAØCSL           | 48,980  | ML   | ND  | Dakota         |          |                 |         |     |     |              |          |
| KØUSA            | 26,640  | ML   | NE  | Midwest        |          |                 |         |     |     |              |          |
| KU7Y             | 92,628  | ML   | NV  | Pacific        | Yes      |                 |         |     |     |              |          |
| N8HR             | 194,054 | ML   | OH  | Great Lakes    | Yes      |                 |         |     |     |              |          |
| W5KS             | 59,696  | ML   | OK  | West Gulf      |          |                 |         |     |     |              |          |
| VE3UZ            | 22,196  | ML   | ONS | Canadian       |          |                 |         |     |     |              |          |
| NK7J             | 66,748  | ML   | OR  | Northwestern   | Yes      |                 |         |     |     |              |          |
| AJ4DT            | 18,620  | ML   | SFL | Southeastern   |          |                 |         |     |     |              |          |
| WA2LET           | 41,000  | ML   | SNJ | Atlantic       |          |                 |         |     |     |              |          |
| W1GMW            | 1,064   | ML   | VT  | New England    |          |                 |         |     |     |              |          |
| W2TZ             | 170,150 | ML   | WNY | Atlantic       |          |                 |         |     |     |              |          |
| N5DO             | 193,556 | ML   | WTX | West Gulf      | Yes      |                 |         |     |     |              |          |
| K3TW             | 68,060  | Q    | NFL | Southeastern   |          |                 |         |     |     |              |          |
| VE3OIL           | 7,304   | Q    | ONS | Canadian       |          |                 |         |     |     |              |          |
| KØHC             | 261,118 | S    | KS  | Midwest        | Yes      |                 |         |     |     |              |          |
| VE9UNB           | 13,000  | S    | MAR | Canadian       |          |                 |         |     |     |              |          |
| K2CC             | 92,588  | S    | NNY | Atlantic       |          |                 |         |     |     |              |          |
| K6LL             | 312,578 | UH   | AZ  | Southwestern   | Yes      |                 |         |     |     |              |          |
| VE3RZ            | 170,316 | UH   | GTA | Canadian       |          |                 |         |     |     |              |          |
| KV7N             | 103,584 | UH   | ID  | Northwestern   |          |                 |         |     |     |              |          |
| N2BJ             | 257,632 | UH   | IL  | Central        |          |                 |         |     |     |              |          |
| VY2TT (K6LA op)  | 261,450 | UH   | MAR | Canadian       | Yes      |                 |         |     |     |              |          |
| K1ESE            | 185,754 | UH   | ME  | New England    |          |                 |         |     |     |              |          |
| K1KD             | 271,576 | UH   | MN  | Dakota         | Yes      |                 |         |     |     |              |          |
| W4MR (AA4NC op)  | 276,722 | UH   | NC  | Roanoke        | Yes      |                 |         |     |     |              |          |
| K9DIG            | 207,198 | UH   | ND  | Dakota         |          |                 |         |     |     |              |          |
| WBØGBI           | 63,448  | UH   | NE  | Midwest        |          |                 |         |     |     |              |          |
| K4XS             | 336,316 | UH   | NFL | Southeastern   |          |                 |         |     |     |              |          |
| VE8EV            | 235,720 | UH   | NT  | Canadian       |          |                 |         |     |     |              |          |
| K5RT             | 282,532 | UH   | NTX | West Gulf      | Yes      |                 |         |     |     |              |          |
| VE3KI            | 111,220 | UH   | ONE | Canadian       |          |                 |         |     |     |              |          |
| W6TK             | 169,320 | UH   | SB  | Southwestern   |          |                 |         |     |     |              |          |
| W1SRD            | 273,900 | UH   | SV  | Pacific        |          |                 |         |     |     |              |          |
| WE9V (KB9OWD op) | 292,658 | UH   | WI  | Central        | Yes      |                 |         |     |     |              |          |
| VE4GV            | 266,672 | UL   | MB  | Canadian       | Yes      |                 |         |     |     |              |          |
| VE6EX            | 226,424 | UL   | AB  | Canadian       |          |                 |         |     |     |              |          |
| NY7N             | 140,270 | UL   | AZ  | Southwestern   | Yes      |                 |         |     |     |              |          |
| VE7URN           | 11,172  | UL   | BC  | Canadian       |          |                 |         |     |     |              |          |
| KØUK             | 168,756 | UL   | CO  | Rocky Mountain | Yes      |                 |         |     |     |              |          |

## Regional Leaders

SOQRP = Single-Op, QRP; SOLP = Single-Op, Low Power; SOHP = Single-Op, High Power; UH/UL = Single-Op Unlimited, High/Low Power; MH/ML = Multioperator High/Low -Power; S = School Club

| Northeast Region   |         |       | Southeast Region                          |         |       | Central Region                                     |         |       | Great Plains Region   |         |       | West Coast Region  |         |       |
|--|---------|-------|---|---------|-------|--|---------|-------|---|---------|-------|--|---------|-------|
| New England, Hudson and Atlantic Divisions; Maritime and Quebec Sections |         |       | Delta, Roanoke and Southeastern Divisions |         |       | Central and Great Lakes Divisions; Ontario Section |         |       | Dakota, Midwest, Rocky Mountain and West Gulf Divisions; Manitoba and Saskatchewan Sections |         |       | Pacific, Northwestern and Southwestern Divisions; Alberta, British Columbia and NWT Sections |         |       |
| Call   | Score   | Cat   | Call                                      | Score   | Cat   | Call   | Score   | Cat   | Call  | Score   | Cat   | Call   | Score   | Cat   |
| VY2ZM  | 361,880 | SOHP  | K4JPD                                     | 280,872 | SOHP  | KW8N   | 278,714 | SOHP  | K5TR  | 330,174 | SOHP  | W7WA   | 348,600 | SOHP  |
| NC1I   | 298,966 | SOHP  | W4RM                                      | 237,214 | SOHP  | AA9A   | 271,078 | SOHP  | NR5M  | 324,364 | SOHP  | K7RL   | 325,028 | SOHP  |
| KD4D   | 268,256 | SOHP  | WA5OYU                                    | 223,768 | SOHP  | K9BGL  | 230,242 | SOHP  | K5NA  | 250,938 | SOHP  | K6NA   | 308,760 | SOHP  |
| AF1T   | 237,712 | SOHP  | K3ZJ                                      | 219,120 | SOHP  | K8AO   | 212,480 | SOHP  | K5WA  | 242,858 | SOHP  | WC6H   | 284,026 | SOHP  |
| WC2W   | 182,250 | SOHP  | KC4HW                                     | 155,308 | SOHP  | W9RE   | 196,344 | SOHP  | VE4VT   | 239,538 | SOHP  | K7RI   | 259,956 | SOHP  |
| AE1P   | 142,428 | SOLP  | N4PN                                      | 246,178 | SOLP  | K9MU   | 177,952 | SOLP  | KUØG  | 213,808 | SOLP  | K2PO   | 258,794 | SOLP  |
| K1BG   | 121,180 | SOLP  | W4LT                                      | 241,572 | SOLP  | WT9U   | 163,012 | SOLP  | WD5K  | 181,106 | SOLP  | K9WZB  | 180,442 | SOLP  |
| K3UA   | 120,516 | SOLP  | NA4K                                      | 204,180 | SOLP  | KØPJ   | 145,304 | SOLP  | KØCN  | 167,772 | SOLP  | N6ZFO  | 165,148 | SOLP  |
| W2RQ   | 114,964 | SOLP  | W4IX                                      | 172,142 | SOLP  | VA3SWG   | 110,722 | SOLP  | K7VU  | 151,372 | SOLP  | KK7AC  | 141,860 | SOLP  |
| VE2HIT   | 108,896 | SOLP  | NP4G                                      | 116,034 | SOLP  | W9ROG  | 109,560 | SOLP  | N7MZW   | 141,912 | SOLP  | N6NZ   | 125,662 | SOLP  |
| NK8Q   | 79,704  | SOQRP | K3TW                                      | 68,060  | SOQRP | N9NE   | 67,200  | SOQRP | NDØC  | 81,344  | SOQRP | NN7SS  | 95,120  | SOQRP |
| NA1DX  | 33,150  | SOQRP | N5EE                                      | 46,488  | SOQRP | KT8K   | 64,960  | SOQRP | KØZL  | 70,684  | SOQRP | WA7PVE   | 49,140  | SOQRP |
| K2UT   | 28,368  | SOQRP | W4IM                                      | 45,756  | SOQRP | K9ARF  | 30,880  | SOQRP | KJ5RM   | 63,200  | SOQRP | W7PT   | 36,792  | SOQRP |
| K1TW   | 21,172  | SOQRP | N4JF                                      | 43,736  | SOQRP | AF9J   | 14,036  | SOQRP | KB5YIA  | 41,192  | SOQRP | W6LPW  | 19,656  | SOQRP |
| N3UR   | 19,890  | SOQRP | N2NQ                                      | 36,498  | SOQRP | N9UXU  | 13,362  | SOQRP | KØRGR   | 33,228  | SOQRP | KK7EL  | 16,800  | SOQRP |
| WB1GQR   | 281,038 | SOUHP | K4XS                                      | 336,316 | SOUHP | WE9V   | 292,658 | SOUHP | K5RT  | 282,532 | SOUHP | K6LL   | 312,578 | SOUHP |
| VY2TT  | 261,450 | SOUHP | W4MR                                      | 276,722 | SOUHP | N2BJ   | 257,632 | SOUHP | K1KD  | 271,576 | SOUHP | W7RN   | 294,816 | SOUHP |
| N3RR   | 218,954 | SOUHP | W4MYA                                     | 219,120 | SOUHP | VE3CX  | 189,738 | SOUHP | NØXR (@NØNI)  | 266,098 | SOUHP | W1SRD  | 273,900 | SOUHP |
| K3DNE  | 205,840 | SOUHP | W4NF                                      | 217,792 | SOUHP | VE3RZ  | 170,316 | SOUHP | WA5ZUP  | 239,112 | SOUHP | W6PZ   | 247,506 | SOUHP |
| W3LL   | 201,690 | SOUHP | N1LN                                      | 210,488 | SOUHP | VE3KI  | 111,220 | SOUHP | N5ZC  | 229,080 | SOUHP | VE8EV  | 235,720 | SOUHP |
| KE3X (@N3HBX)  | 178,284 | SOULP | W4AAA                                     | 247,008 | SOULP | VE3MGY   | 136,800 | SOULP | VE4GV   | 266,762 | SOULP | VE6EX  | 226,424 | SOULP |
| K2DFC  | 118,690 | SOULP | WB4OMM                                    | 165,170 | SOULP | N4TZ   | 75,932  | SOULP | NØKK (@NØAT)  | 245,348 | SOULP | VY1EI  | 173,920 | SOULP |
| K1ZO   | 112,714 | SOULP | N2QT                                      | 119,354 | SOULP | KD4SN  | 73,372  | SOULP | VE4EA   | 181,770 | SOULP | NY7N   | 140,270 | SOULP |
| AA1UT  | 91,798  | SOULP | NF4A                                      | 96,280  | SOULP | W9QL   | 73,040  | SOULP | KØUK  | 168,756 | SOULP | N6EE   | 118,572 | SOULP |
| K2NNY  | 90,470  | SOULP | N4VA                                      | 85,490  | SOULP | W9PA   | 67,562  | SOULP | KØFVF   | 159,360 | SOULP | W7ZRC  | 91,466  | SOULP |
| W1XX   | 292,160 | MH    | WP2Z                                      | 356,900 | MH    | NØFCD  | 162,514 | MH    | WØSD  | 362,710 | MH    | KL7RA  | 326,024 | MH    |
| N1RR (@K1TTT)  | 267,260 | MH    | K4OV                                      | 280,208 | MH    | K8BZ   | 162,000 | MH    | WØNO  | 295,978 | MH    | NX6T   | 312,080 | MH    |
| N3OC   | 239,372 | MH    | KG5VK                                     | 253,648 | MH    | N9SJ   | 157,866 | MH    | KØGND   | 245,348 | MH    | N6BV   | 247,838 | MH    |
| WA3EKL   | 238,210 | MH    | AA4XG                                     | 176,464 | MH    | VA3ZV  | 121,346 | MH    | KBØHH   | 240,036 | MH    | WA7LT  | 246,012 | MH    |
| K3MIM  | 230,242 | MH    | NW8U                                      | 133,168 | MH    | VA3SK  | 90,802  | MH    | NN5V  | 228,084 | MH    | W6DR   | 188,908 | MH    |
| W2TZ   | 170,150 | ML    | NA5NN                                     | 136,784 | ML    | N8HR   | 194,054 | ML    | N5DO  | 193,556 | ML    | KU7Y   | 92,628  | ML    |
| K3AJ   | 151,724 | ML    | KF3N                                      | 86,920  | ML    | K8YR   | 63,520  | ML    | WR5O  | 130,216 | ML    | NK7J   | 66,748  | ML    |
| VE9OA  | 83,312  | ML    | WN1G                                      | 86,154  | ML    | W9FZ   | 49,742  | ML    | NØHJZ   | 101,758 | ML    | W6K  | 66,096  | ML    |
| NW2K   | 79,016  | ML    | N2XQM                                     | 79,514  | ML    | N9VI   | 42,994  | ML    | W5MPZ   | 66,092  | ML    | WA6AUP   | 39,516  | ML    |
| W3GR   | 64,480  | ML    | KC4GIA                                    | 18,942  | ML    | N9REP  | 24,708  | ML    | WØFRC   | 62,560  | ML    | KI6WD (@K6NFF)   | 29,232  | ML    |

## Division Winners

### Single-Operator, High Power

|                |        |         |
|----------------|--------|---------|
| Atlantic       | KD4D   | 268,256 |
| Central        | AA9A   | 271,078 |
| Dakota         | KØHB   | 186,632 |
| Delta          | WA5OYU | 223,768 |
| Great Lakes    | KW8N   | 278,714 |
| Hudson         | WC2W   | 182,250 |
| Midwest        | KØDEQ  | 120,366 |
| New England    | NC1I   | 298,966 |
| Northwestern   | W7WA   | 348,600 |
| Pacific        | WC6H   | 284,026 |
| Roanoke        | W4RM   | 237,214 |
| Rocky Mountain | N2IC   | 184,320 |
| Southeastern   | K4JPD  | 280,872 |
| Southwestern   | K6NA   | 308,760 |
| West Gulf      | K5TR   | 330,174 |
| Canada         | VY2ZM  | 361,880 |

### Single-Operator, Low Power

|                |       |         |
|----------------|-------|---------|
| Atlantic       | K3UA  | 120,516 |
| Central        | K9MU  | 177,952 |
| Dakota         | KØCN  | 167,772 |
| Delta          | NA4K  | 204,180 |
| Great Lakes    | WZ8T  | 91,134  |
| Hudson         | W2RQ  | 114,964 |
| Midwest        | KUØG  | 213,808 |
| New England    | AE1P  | 142,428 |
| Northwestern   | K2PO  | 258,794 |
| Pacific        | N6ZFO | 165,148 |
| Roanoke        | W4IX  | 172,142 |
| Rocky Mountain | K7VU  | 151,372 |
| Southeastern   | N4PN  | 246,178 |
| Southwestern   | K9WZB | 180,442 |
| West Gulf      | WD5K  | 181,106 |
| Canada         | VE5SF | 118,690 |

### Single-Operator, QRP

|                |        |        |
|----------------|--------|--------|
| Atlantic       | NK8Q   | 79,704 |
| Central        | N9NE   | 67,200 |
| Dakota         | NDØC   | 81,344 |
| Delta          | N5EE   | 46,488 |
| Great Lakes    | KT8K   | 64,960 |
| Hudson         | W2JEK  | 5,520  |
| Midwest        | KØZL   | 70,684 |
| New England    | K1TW   | 21,172 |
| Northwestern   | NN7SS  | 95,120 |
| Pacific        | W6LPW  | 19,656 |
| Roanoke        | W4IM   | 45,756 |
| Rocky Mountain | KQØC   | 32,430 |
| Southeastern   | K3TW   | 68,060 |
| Southwestern   | KK7EL  | 16,800 |
| West Gulf      | KJ5RM  | 63,200 |
| Canada         | VE3FCT | 12,096 |

### Single-Operator Unlimited, High Power

|                |              |         |
|----------------|--------------|---------|
| Atlantic       | N3RR         | 218,954 |
| Central        | WE9V         | 292,658 |
| Dakota         | K1KD         | 271,576 |
| Delta          | AB4GG        | 114,042 |
| Great Lakes    | ND8L         | 94,620  |
| Hudson         | W2GDJ        | 177,284 |
| Midwest        | NØXR (@NØNI) | 266,098 |
| New England    | WB1GQR       | 281,038 |
| Northwestern   | AL9A         | 140,270 |
| Pacific        | W7RN         | 294,816 |
| Roanoke        | W4MR         | 276,722 |
| Rocky Mountain | WA5ZUP       | 239,112 |
| Southeastern   | K4XS         | 336,316 |
| Southwestern   | K6LL         | 312,578 |
| West Gulf      | K5RT         | 282,532 |
| Canada         | VY2TT        | 261,450 |

### Single-Operator Unlimited, Low Power

|                |               |         |
|----------------|---------------|---------|
| Atlantic       | KE3X (@N3HBX) | 178,284 |
| Central        | N4TZ          | 75,932  |
| Dakota         | NØKK (@NØAT)  | 245,348 |
| Delta          | WBØRUR        | 71,416  |
| Great Lakes    | KD4SN         | 73,372  |
| Hudson         | K2DFC         | 118,690 |
| Midwest        | NUØQ          | 58,158  |
| New England    | K1ZO          | 112,714 |
| Northwestern   | W7ZRC         | 91,466  |
| Pacific        | N6EE          | 118,572 |
| Roanoke        | W4AAA         | 247,008 |
| Rocky Mountain | KØUK          | 168,756 |
| Southeastern   | WB4OMM        | 165,170 |
| Southwestern   | NY7N          | 140,270 |
| West Gulf      | KK5LO         | 41,148  |
| Canada         | VE4GV         | 266,762 |

### Multioperator, High Power

|                |       |         |
|----------------|-------|---------|
| Atlantic       | N3OC  | 239,372 |
| Central        | NØFCD | 162,514 |
| Dakota         | WØSD  | 362,710 |
| Delta          | KG5VK | 253,648 |
| Great Lakes    | K8BZ  | 162,000 |
| Hudson         | W2LV  | 153,832 |
| Midwest        | WØNO  | 295,978 |
| New England    | W1XX  | 292,160 |
| Northwestern   | KL7RA | 326,024 |
| Pacific        | N6BV  | 247,838 |
| Roanoke        | K4OV  | 280,208 |
| Rocky Mountain | NN5V  | 228,084 |
| Southeastern   | WP2Z  | 356,900 |
| Southwestern   | NX6T  | 312,080 |
| West Gulf      | KBØHH | 240,036 |
| Canada         | VE5RI | 200,196 |

### Multioperator, Low Power

|                |        |         |
|----------------|--------|---------|
| Atlantic       | W2TZ   | 170,150 |
| Central        | W9FZ   | 49,742  |
| Dakota         | NØHJZ  | 101,758 |
| Delta          | NA5NN  | 136,784 |
| Great Lakes    | N8HR   | 194,054 |
| Hudson         | W2EF   | 6,278   |
| Midwest        | NØPVZ  | 56,744  |
| New England    | N2GZ   | 57,072  |
| Northwestern   | NK7J   | 66,748  |
| Pacific        | KU7Y   | 92,628  |
| Roanoke        | KF3N   | 86,920  |
| Rocky Mountain | W5MPZ  | 66,092  |
| Southeastern   | WN1G   | 86,154  |
| Southwestern   | WA6AUP | 39,516  |
| West Gulf      | N5DO   | 193,556 |
| Canada         | VE9OA  | 83,312  |

### School Club

|              |        |         |
|--------------|--------|---------|
| Atlantic     | K2CC   | 92,588  |
| Central      | W9JWC  | 51,520  |
| Delta        | W5YM   | 45,440  |
| Great Lakes  | W8SH   | 50,880  |
| Hudson       | W2DSC  | 5,576   |
| Midwest      | KØHC   | 261,118 |
| New England  | W1AF   | 135,136 |
| Pacific      | W6YX   | 228,416 |
| Roanoke      | K4KDJ  | 29,520  |
| Southeastern | W4AQL  | 10,304  |
| Southwestern | W6RFU  | 13,640  |
| West Gulf    | WD5AGO | 21,060  |
| Canada       | VE9UNB | 13,000  |

*The incorrect version of this table originally distributed is corrected in Version 1.1 of these results.*

## Sponsored Plaque Winners - Phone

|  |   |                   |
|--|---|-------------------|
| Overall                                    |   |                   |
| Single Operator High Power Phone           | Dan Henderson, N1ND                                 | VY2ZM             |
| Single Operator Low Power Phone            | ARRL Contest Branch - Ken Adams, K5KA Memorial      | K2PO              |
| Single Operator QRP Phone                  | QRP Amateur Radio Club International                | NN7SS (K6UFO, op) |
| Single Operator Unlimited High Power Phone | Icom America  | K4XS              |
| Single Operator Unlimited Low Power Phone  | Icom America  | VE4GV             |
| Multioperator High Power Phone             | Icom America  | W0SD              |
| Multioperator Low Power Phone              | Icom America  | N8HR              |
| School Club Phone                          | David Brandenburg, K5RQ                             | K0HC              |
| Atlantic                                   |   |                   |
| Single Operator High Power Phone           | Icom America  | KD4D              |
| Single Operator Low Power Phone            | Potomac Valley Radio Club                           | K3UA              |
| Single Operator QRP Phone                  | Icom America  | NK8Q              |
| Single Operator Unlimited High Power Phone | Icom America  | N3RR              |
| Single Operator Unlimited Low Power Phone  | Icom America  | KE3X (@N3HBX)     |
| Multioperator High Power Phone             | Icom America  | N3OC              |
| Multioperator Low Power Phone              | Icom America  | W2TZ              |
| School Club Phone                          | Icom America  | K2CC              |
| Central                                    |   |                   |
| Single Operator High Power Phone           | Society Of Midwest Contesters                       | AA9A              |
| Single Operator Low Power Phone            | Society Of Midwest Contesters                       | K9MU              |
| Single Operator QRP Phone                  | Sean Kutzko, KX9X                                   | N9NE              |
| Single Operator Unlimited High Power Phone | Icom America  | WE9V (KB9OWD, op) |
| Single Operator Unlimited Low Power Phone  | Icom America  | N4TZ              |
| Multioperator High Power Phone             | Icom America  | N0FCD             |
| Multioperator Low Power Phone              | Icom America  | W9FZ              |
| School Club Phone                          | Icom America  | W9JWC             |
| Dakota                                     |   |                   |
| Single Operator High Power Phone           | Minnesota Wireless Association                      | K0HB              |
| Single Operator Low Power Phone            | Minnesota Wireless Association                      | K0CN              |
| Single Operator QRP Phone                  | Tod Olson, K0TO                                     | ND0C              |
| Single Operator Unlimited High Power Phone | Minnesota Wireless Association                      | K1KD              |
| Single Operator Unlimited Low Power Phone  | Tod Olson, K0TO N0KK (@N0AT)                        |                   |
| Multioperator High Power Phone             | In Memory of Jim Dokmo, K0FVF by Minnesota Wireless | W0SD              |
| Multioperator Low Power Phone              | Icom America  | N0HJZ             |
| Delta                                      |   |                   |
| Single Operator High Power Phone           | Icom America  | WA5OYU            |
| Single Operator Low Power Phone            | Icom America  | NA4K              |
| Single Operator QRP Phone                  | Icom America  | N5EE              |
| Single Operator Unlimited High Power Phone | Icom America  | AB4GG             |
| Single Operator Unlimited Low Power Phone  | Icom America  | WB0RUR            |
| Multioperator High Power Phone             | Icom America  | KG5VK             |
| Multioperator Low Power Phone              | Icom America  | NA5NN             |
| School Club Phone                          | Icom America  | W5YM              |
| Great Lakes                                |   |                   |
| Single Operator High Power Phone           | Icom America  | KW8N              |
| Single Operator Low Power Phone            | Icom America  | WZ8T              |
| Single Operator QRP Phone                  | Icom America  | KT8K              |
| Single Operator Unlimited High Power Phone | Icom America  | ND8L              |
| Single Operator Unlimited Low Power Phone  | Icom America  | KD4SN             |
| Multioperator High Power Phone             | Icom America  | K8BZ              |
| Multioperator Low Power Phone              | Icom America  | N8HR              |
| School Club Phone                          | Icom America  | W8SH              |
| Hudson                                     |   |                   |
| Single Operator High Power Phone           | Icom America  | WC2W              |
| Single Operator Low Power Phone            | Icom America  | W2RQ              |
| Single Operator QRP Phone                  | Icom America  | W2JEK             |
| Single Operator Unlimited High Power Phone | Icom America  | W2GDJ             |
| Single Operator Unlimited Low Power Phone  | Icom America  | K2DFC             |
| Multioperator High Power Phone             | Icom America  | W2LV              |
| Multioperator Low Power Phone              | Icom America  | W2EF              |
| School Club Phone                          | Icom America  | W2DSC             |

|  |   |                   |
|--|---|-------------------|
| Midwest                                    |   |                   |
| Single Operator High Power Phone           | Icom America                              | KØDEQ             |
| Single Operator Low Power Phone            | Society Of Midwest Contesters             | KUØG              |
| Single Operator QRP Phone                  | Icom America                              | KØZL              |
| Single Operator Unlimited High Power Phone | Icom America                              | NØXR (@NØNI)      |
| Single Operator Unlimited Low Power Phone  | Icom America                              | NUØQ              |
| Multioperator High Power Phone             | Icom America                              | WØNO              |
| Multioperator Low Power Phone              | Icom America                              | NØPVZ             |
| School Club Phone                          | Icom America                              | KØHC              |
| New England                                |   |                   |
| Single Operator High Power Phone           | Icom America                              | NC1I (K9PW, op)   |
| Single Operator Low Power Phone            | Icom America                              | AE1P              |
| Single Operator QRP Phone                  | QRP Club of New England                   | K1TW              |
| Single Operator Unlimited High Power Phone | Icom America                              | WB1GQR (W1SJ, op) |
| Single Operator Unlimited Low Power Phone  | Icom America                              | K1ZO              |
| Multioperator High Power Phone             | Icom America                              | W1XX              |
| Multioperator Low Power Phone              | Icom America                              | N2GZ              |
| School Club Phone                          | Icom America                              | W1AF              |
| Northwestern                               |   |                   |
| Single Operator High Power Phone           | Icom America                              | W7WA              |
| Single Operator Low Power Phone            | Icom America                              | K2PO              |
| Single Operator QRP Phone                  | Barbara Yasson, AC7UH                     | NN7SS (K6UFO, op) |
| Single Operator Unlimited High Power Phone | Icom America                              | AL9A              |
| Single Operator Unlimited Low Power Phone  | Icom America                              | W7ZRC             |
| Multioperator High Power Phone             | Icom America                              | KL7RA             |
| Multioperator Low Power Phone              | Icom America                              | NK7J              |
| Pacific                                    |   |                   |
| Single Operator High Power Phone           | Icom America                              | WC6H              |
| Single Operator Low Power Phone            | Icom America                              | N6ZFO             |
| Single Operator QRP Phone                  | Icom America                              | W6LPW             |
| Single Operator Unlimited High Power Phone | Icom America                              | W7RN (WX5S, op)   |
| Single Operator Unlimited Low Power Phone  | Icom America                              | N6EE              |
| Multioperator High Power Phone             | Icom America                              | N6BV              |
| Multioperator Low Power Phone              | Icom America                              | KU7Y              |
| School Club Phone                          | Icom America                              | W6YX              |
| Roanoke                                    |   |                   |
| Single Operator High Power Phone           | Icom America                              | W4RM (N3AHA, op)  |
| Single Operator Low Power Phone            | Icom America                              | W4IX              |
| Single Operator QRP Phone                  | Ronnie Reams WA4MJF & Sherry Reams KB4EXL | W4IM              |
| Single Operator Unlimited High Power Phone | Ronnie Reams WA4MJF & Sherry Reams KB4EXL | W4MR (AA4NC, op)  |
| Single Operator Unlimited Low Power Phone  | Icom America                              | W4AAA (KK9A, op)  |
| Multioperator High Power Phone             | Ronnie Reams WA4MJF & Sherry Reams KB4EXL | K4OV              |
| Multioperator Low Power Phone              | Icom America                              | KF3N              |
| School Club Phone                          | Ronnie Reams WA4MJF & Sherry Reams KB4EXL | K4KDJ             |
| Rocky Mountain                             |   |                   |
| Single Operator High Power Phone           | Icom America                              | N2IC              |
| Single Operator Low Power Phone            | Icom America                              | K7VU              |
| Single Operator QRP Phone                  | Icom America                              | KQØC              |
| Single Operator Unlimited High Power Phone | Icom America                              | WA5ZUP            |
| Single Operator Unlimited Low Power Phone  | Icom America                              | KØUK              |
| Multioperator High Power Phone             | Icom America                              | NN5V              |
| n Multioperator Low Power Phone            | Icom America                              | W5MPZ             |
| Southeastern                               |   |                   |
| Single Operator High Power Phone           | Icom America                              | K4JPD (N4OO, op)  |
| Single Operator Low Power Phone            | Icom America                              | N4PN              |
| Single Operator QRP Phone                  | Icom America                              | K3TW              |
| Single Operator Unlimited High Power Phone | Charlie Wooten, NF4A                      | K4XS              |
| Single Operator Unlimited Low Power Phone  | Icom America                              | WB4OMM            |
| Multioperator High Power Phone             | Icom America                              | WP2Z              |
| Multioperator Low Power Phone              | Icom America                              | WN1G              |
| School Club Phone                          | Icom America                              | W4AQL             |

|  |                       |                   |
|--|-----------------------|-------------------|
| Southwestern                               |                       |                   |
| Single Operator High Power Phone           | Icom America          | K6NA (N6ED, op)   |
| Single Operator Low Power Phone            | Icom America          | K9WZB             |
| Single Operator QRP Phone                  | N6HE and W6DLD        | KK7EL             |
| Single Operator Unlimited High Power Phone | Icom America          | K6LL              |
| Single Operator Unlimited Low Power Phone  | Icom America          | NY7N              |
| Multioperator High Power Phone             | Icom America          | NX6T              |
| Multioperator Low Power Phone              | Icom America          | WA6AUP            |
| School Club Phone                          | Icom America          | W6RFU (W6AAF, op) |
| West Gulf                                  |                       |                   |
| Single Operator High Power Phone           | Icom America          | K5TR              |
| Single Operator Low Power Phone            | Icom America          | WD5K              |
| Single Operator QRP Phone                  | Icom America          | KJ5RM             |
| Single Operator Unlimited High Power Phone | Icom America          | K5RT              |
| Single Operator Unlimited Low Power Phone  | Icom America          | KK5LO             |
| Multioperator High Power Phone             | Icom America          | KBØHH             |
| Multioperator Low Power Phone              | Icom America          | N5DO              |
| School Club Phone                          | Icom America          | WD5AGO            |
| Canada                                     |                       |                   |
| Single Operator High Power Phone           | Icom America          | VY2ZM             |
| Single Operator Low Power Phone            | Icom America          | VE5SF             |
| Single Operator QRP Phone                  | Frank Merceret, NA4CW | VE3FCT            |
| Single Operator Unlimited High Power Phone | Icom America          | VY2TT             |
| Single Operator Unlimited Low Power Phone  | Icom America          | VE4GV             |
| Multioperator High Power Phone             | Icom America          | VE5RI             |
| Multioperator Low Power Phone              | Icom America          | VE9OA             |
| School Club Phone                          | Icom America          | VE9UNB            |

## Sponsored Plaque Winners - CW

CW plaque winner listings were combined with the Phone plaque winners this year in response to delays in managing the plaque sponsorship process. The plaque winner listing for CW will return to the CW writeup with the 2014 contest. – Ed.

### Overall

|   |                                      |                   |
|---|--------------------------------------|-------------------|
| Single Operator High Power CW           | Trey Garlough, N5KO                  | W7RN (N6TV, op)   |
| Single Operator Low Power CW            | Sean Kutzko, KX9X                    | K7BG              |
| Single Operator QRP CW                  | QRP Amateur Radio Club International | NN7SS (K6UFO, op) |
| Single Operator Unlimited High Power CW | Joe KH6GA & Victoria N4WV            | KØEU              |
| Single Operator Unlimited Low Power CW  | Icom America                         | WE9V              |
| Multioperator High Power CW             | Icom America                         | W2FU              |
| Multioperator Low Power CW              | Icom America                         | WØDLE             |
| School Club CW                          | Icom America                         | W6YX              |

### Atlantic

|   |                           |                  |
|---|---------------------------|------------------|
| Single Operator High Power CW           | Icom America              | AA3B             |
| Single Operator Low Power CW            | Potomac Valley Radio Club | N8NA             |
| Single Operator QRP CW                  | Icom America              | WB8YYY           |
| Single Operator Unlimited High Power CW | Icom America              | NY3A             |
| Single Operator Unlimited Low Power CW  | Icom America              | K2NNY (K2DB, op) |
| Multioperator High Power CW             | Icom America              | W2FU             |
| School Club CW                          | Icom America              | W3YI (AB3LS, op) |

### Central

|   |                               |       |
|---|-------------------------------|-------|
| Single Operator High Power CW           | Society Of Midwest Contesters | W9RE  |
| Single Operator Low Power CW            | Society Of Midwest Contesters | N9CK  |
| Single Operator QRP CW                  | Sean Kutzko, KX9X             | W19WI |
| Single Operator Unlimited High Power CW | Icom America                  | N4TZ  |
| Single Operator Unlimited Low Power CW  | Icom America                  | WE9V  |
| Multioperator High Power CW             | Icom America                  | W9YK  |
| Multioperator Low Power CW              | Icom America                  | N9MT  |

### Dakota

|   |                                |                 |
|---|--------------------------------|-----------------|
| Single Operator High Power CW           | Minnesota Wireless Association | WDØT            |
| Single Operator Low Power CW            | Minnesota Wireless Association | NØAT (NØKK, op) |
| Single Operator QRP CW                  | Tod Olson, KØTO                | NØUR            |
| Single Operator Unlimited High Power CW | Minnesota Wireless Association | KTØA            |
| Single Operator Unlimited Low Power CW  | Icom America                   | KTØR (KØOB, op) |
| Multioperator High Power CW             | Minnesota Wireless Association | KØJE            |
| Multioperator Low Power CW              | Icom America                   | KEØL            |

### Delta

|   |              |       |
|---|--------------|-------|
| Single Operator High Power CW           | Icom America | N4OGW |
| Single Operator Low Power CW            | Icom America | K4RO  |
| Single Operator QRP CW                  | Icom America | WF7T  |
| Single Operator Unlimited High Power CW | Icom America | N4ZZ  |
| Single Operator Unlimited Low Power CW  | Icom America | W4NZ  |
| Multioperator Low Power CW              | Icom America | N4UW  |
| School Club CW                          | Icom America | K5LSU |

### Great Lakes

|   |                      |       |
|---|----------------------|-------|
| Single Operator High Power CW           | Icom America         | N4QS  |
| Single Operator Low Power CW            | Icom America         | W1NN  |
| Single Operator QRP CW                  | Icom America         | K9TM  |
| Single Operator Unlimited High Power CW | Icom America         | N8XE  |
| Single Operator Unlimited Low Power CW  | John S. Comella N8AA | K8BL  |
| Multioperator High Power CW             | Icom America         | KT4RR |
| Multioperator Low Power CW              | Icom America         | W8EDU |
| School Club CW                          | Icom America         | WB5H  |

### Hudson

|   |              |                    |
|---|--------------|--------------------|
| Single Operator High Power CW           | Icom America | N2NT (N2NC, op)    |
| Single Operator Low Power CW            | Icom America | W2LK               |
| Single Operator QRP CW                  | Icom America | K2YGM              |
| Single Operator Unlimited High Power CW | Icom America | W2VQ               |
| Single Operator Unlimited Low Power CW  | Icom America | WQ2N               |
| Multioperator High Power CW             | Icom America | AB2DE              |
| School Club CW                          | Icom America | W2DSC (WB2NVR, op) |

|   |                               |                   |
|---|-------------------------------|-------------------|
| Midwest                                 |                               |                   |
| Single Operator High Power CW           | Icom America                  | NØNI (AG9A, op)   |
| Single Operator Low Power CW            | Society Of Midwest Contesters | KØVBU             |
| Single Operator QRP CW                  | Icom America                  | WØEEE (NØAX, op)  |
| Single Operator Unlimited High Power CW | Icom America                  | NØXR              |
| Single Operator Unlimited Low Power CW  | Icom America                  | KØNE              |
| Multioperator High Power CW             | Icom America                  | KØWA              |
| School Club CW                          | Icom America                  | KØHC (WØBH, op)   |
| New England                             |                               |                   |
| Single Operator High Power CW           | Icom America                  | K5ZD              |
| Single Operator Low Power CW            | Icom America                  | WA1Z              |
| Single Operator QRP CW                  | Icom America                  | N1RR (@K1TTT)     |
| Single Operator Unlimited High Power CW | Icom America                  | KI1G              |
| Single Operator Unlimited Low Power CW  | Icom America                  | N1QD              |
| School Club CW                          | Icom America                  | W1AF (W1PL, op)   |
| Northwestern                            |                               |                   |
| Single Operator High Power CW           | Icom America                  | N9RV              |
| Single Operator Low Power CW            | Icom America                  | K7BG              |
| Single Operator QRP CW                  | Phil Yasson, AB7RW            | NN7SS (K6UFO, op) |
| Single Operator Unlimited High Power CW | Icom America                  | K7RL              |
| Single Operator Unlimited Low Power CW  | Icom America                  | KK7S              |
| Pacific                                 |                               |                   |
| Single Operator High Power CW           | Icom America                  | W7RN (N6TV, op)   |
| Single Operator Low Power CW            | Robert A. Wilson, N6TV        | K7GK (@W6JZH)     |
| Single Operator QRP CW                  | Icom America                  | W6JT1             |
| Single Operator Unlimited High Power CW | Icom America                  | KH7XX (KH6SH, op) |
| Single Operator Unlimited Low Power CW  | Icom America                  | N6EE              |
| Multioperator High Power CW             | Icom America                  | K6SU              |
| Multioperator Low Power CW              | Icom America                  | KH6LC             |
| School Club CW                          | Icom America                  | W6YX              |
| Roanoke                                 |                               |                   |
| Single Operator High Power CW           | Potomac Valley Radio Club     | N4AF              |
| Single Operator Low Power CW            | Icom America                  | N9NB              |
| Single Operator QRP CW                  | Icom America                  | K4QPL             |
| Single Operator Unlimited High Power CW | Icom America                  | N1LN              |
| Single Operator Unlimited Low Power CW  | Icom America                  | W4MR (AA4NC, op)  |
| Multioperator High Power CW             | Icom America                  | W4RM              |
| Multioperator Low Power CW              | Icom America                  | K3MZ              |
| Rocky Mountain                          |                               |                   |
| Single Operator High Power CW           | Icom America                  | WØUA              |
| Single Operator Low Power CW            | Icom America                  | K7VU              |
| Single Operator QRP CW                  | Icom America                  | KØRI              |
| Single Operator Unlimited High Power CW | Icom America                  | KØEU              |
| Single Operator Unlimited Low Power CW  | Icom America                  | KK6MC             |
| Multioperator High Power CW             | Icom America                  | AA5B              |
| Multioperator Low Power CW              | Icom America                  | WØDLE             |
| Southeastern                            |                               |                   |
| Single Operator High Power CW           | Icom America                  | K4BAI             |
| Single Operator Low Power CW            | Icom America                  | NP3A              |
| Single Operator QRP CW                  | Icom America                  | N4OO              |
| Single Operator Unlimited High Power CW | Charlie Wooten, NF4A          | N4BP              |
| Single Operator Unlimited Low Power CW  | Icom America                  | N4PN              |
| Multioperator High Power CW             | Icom America                  | KP2M              |
| Multioperator Low Power CW              | Icom America                  | K4MM              |
| School Club CW                          | Icom America                  | W4AQL             |
| Southwestern                            |                               |                   |
| Single Operator High Power CW           | Icom America                  | K6LA              |
| Single Operator Low Power CW            | Icom America                  | K6AQL (KØDI, op)  |
| Single Operator QRP CW                  | N6HE and W6DLD                | N7IR              |
| Single Operator Unlimited High Power CW | Icom America                  | K6LL              |
| Single Operator Unlimited Low Power CW  | Icom America                  | KB7Q              |
| Multioperator High Power CW             | Icom America                  | NX6T              |
| Multioperator Low Power CW              | Icom America                  | WA6KYR            |



|   |                                      |                  |
|---|--------------------------------------|------------------|
| School Club CW                          | Icom America                         | W6RFU (AC6T, op) |
| West Gulf                               |                                      |                  |
| Single Operator High Power CW           | Icom America                         | N5RZ             |
| Single Operator Low Power CW            | Icom America                         | W8FN             |
| Single Operator QRP CW                  | Icom America                         | AA5TB            |
| Single Operator Unlimited High Power CW | Icom America                         | K5RT             |
| Single Operator Unlimited Low Power CW  | Icom America                         | N5DO             |
| Multioperator Low Power CW              | Icom America                         | K5CM             |
| School Club CW                          | Icom America                         | N5XU (AA5BT, op) |
| Canada                                  |                                      |                  |
| Single Operator High Power CW           | Icom America                         | VE7CC            |
| Single Operator Low Power CW            | Icom America                         | VE4GV            |
| Single Operator QRP CW                  | QRP Amateur Radio Club International | VA3SB            |
| Single Operator Unlimited High Power CW | Icom America                         | VE3KI            |
| Single Operator Unlimited Low Power CW  | Icom America                         | VE6EX            |
| Multioperator High Power CW             | Icom America                         | VY1EI            |
| Multioperator Low Power CW              | Icom America                         | VE4EA            |