

1999 June VHF QSO Party Results

**VHF/
UHF**

operators, microwave gurus and weak signal enthusiasts are a rare breed in today's Amateur Radio. Thank goodness we have them.

In many circles, the contesting credo is "loud is good." It is hard to argue with that. Getting "loud" requires tremendous time, energy and planning. Never underestimate the ability of a high power operator. The quest for "loud" presents a set of problems unique to guys who go QRO on the HF bands.

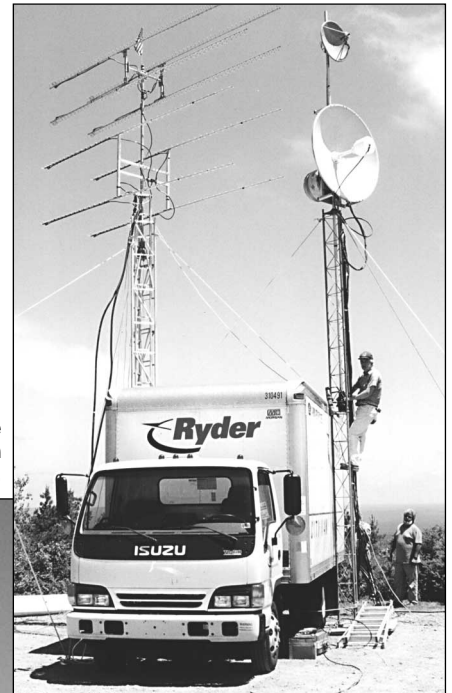
Among VHF/UHF contesters at times the credo may well be "loud is not possible." At frequencies where fractions of dBs can make the difference between completed QSOs and fruitless efforts, at times just being heard becomes the crusade. It comprises a different set of challenges that tax the skills of these dedicated operators. Running low power or QRP on the highest frequencies will test the mettle of even the most experienced operators.

To encourage this challenge the ARRL sponsors a series of annual events in the highest ranges of the amateur spectrum. Always among the most popular is the annual June VHF QSO party. In 1999, 701 log entries were received at Headquarters from across the USA and beyond, including Canada, Mexico, the Bahamas and Cuba for this early summer soirée. This

included 75 rover entries—11% of the total entries received.

Only one overall scoring record fell in the June ARRL VHF QSO party. Congratulations to the Mt. Greylock Expeditionary Force W2SZ/1 on a record-setting multi-operator score of 1,746,602 points. This is

It is a true team effort to handle the logistics at the W3CCX site on Camelback Mountain.



Twenty-three antennas and a quarter mile of coax made up the W3SE operating locale.

Region Box

Northeast Region

(New England, Hudson and Atlantic Divisions; Maritime and Quebec Sections)

K1TEO 378,658 S
K1UHF 220,160 S
WA2FGK 203,190 S
(K2LNS,op)

W1QB 45,090 Q
K1ZE 29,920 Q
WB2AMU 3,630 Q

W2SZ/1 1,746,602 M
W2UTH 1,066,602 M
K3MQH 814,929 M

K3YTL 297,306 L
AB2I 129,610 L
K2BAR 120,032 L

N3IQ 302,341 R
W3EKT 141,702 R
N1MJJD 112,409 R

Southeast Region

(Delta, Roanoke and Southeastern Divisions)

W4RX 106,335 S
K2UOP/8 104,104 S
N8UM 83,456 S

AI4CW 1,508 Q
W4SKI 1,215 Q

K8GP 1,214,750 M
K4RF 78,400 M
K4SZ 4,165 M

W4IY 252,096 L
AA4ZZ 150,920 L
W4COV 28,747 L

W4VHF 60,701 R
N4OFA 44,411 R
NK4Q 11,620 R

Central Region

(Central and Great Lakes Divisions; Ontario Section)

K9PW 300,040 S
KE8FD 144,313 S
K8TQK 133,101 S

W9GKA 8,320 Q
N8XA 6,174 Q
KD4EVB 390 Q

W0UC/9 200,618 M
W9ICE 192,240 M
WW8M 165,981 M

VA3AEC 16,905 L
W8ZNT 11,220 L
KC8AAV 6,039 L

AB4CR 134,656 R
K8WW 72,726 R
N4STK 59,254 R

Midwest Region

(Dakota, Midwest, Rocky Mountain and West Gulf Divisions; Manitoba and Saskatchewan Sections)

K5IUA 146,664 S
W8CM 118,030 S
K0GU 117,832 S

WD5AGO 4,600 Q

W1XE 253,129 M
KK5IH 63,008 M
W0KVA 44,577 M

W7XU 249,084 L
W5KFT 148,626 L
N0UK 97,970 L

W5DF 66,204 R
WB5VYE 45,356 R
KF0UK 36,660 R

West Coast Region

(Pacific, Northwestern and Southwestern Divisions; Alberta, British Columbia and NWT/Yukon Sections)

N6HKF 101,010 S
K6TSK 61,311 S
KQ6QW 49,440 S

KC6TMB 12,992 Q
K6LMN 11,956 Q
N6JO 11,568 Q

W6TOI 170,534 M
W3SE 153,446 M
W6MMM 95,892 M

W2ODH/6 376,068 L
WA7JTM 61,341 L
KF7NP 47,520 L

N6DN 49,770 R
AL1VE 24,544 R
AA7VT 22,540 R

S = Single Operator; M = Multioperator; L = Limited multioperator; Q = QRP

Top Ten Box and Plaques

Single Operator Sponsor

K1TEO	378,658	Mt. Greylock Expeditionary Force, W2SZ/1
K9PW	300,040	Mt. Frank Contesters, K9NS
K1UHF	220,160	Ed Parsons, K1TR
W2AFGK (K2LNS,op)	203,190	Wellesley ARS, Mt. Equinox Contest Crew
K1RZ	157,174	NØKQY, WØLD, NØJK, WBØDRL, NØLL
K5IUA	146,664	South Mountain Contest Team, K3MQH
KE8FD	144,313	In Memory of John Chambers W6NLZ by John Butrovich W5UWB
K3DNE	141,115	AB4CR Rover Team
K1GX	136,629	Southeastern VHF Society
K8TQK	133,101	

QRP Portable

W1QB	45,090	West Coast VHFer
K1ZE	29,920	Robin Gist, K4VU
KC6TMB	12,992	
K6LMN	11,956	
N6JO	11,568	
W9GKA	8,320	
N8XA	6,174	
WD5AGO	4,600	
WB2AMU	3,630	
AC6XK	3,077	

Multioperator

W2SZ/1	1,746,602	Randy Stegemeyer, W7HR
K8GP	1,214,750	N2LIV & Ten-X Group
W2UTH	1,066,602	Mt Airy VHF Club
K3MQH	814,929	Rochester VHF Group
W3CCX	718,537	George Noyes, W1XE
K2TVI	344,469	Schenectady ARA, K2AE
K1WHS	320,024	In Memory of Sid Krauss, WA2VNK
WD3R	263,857	
W1XE	253,129	
WØUC/9	200,618	

Limited Multioperator

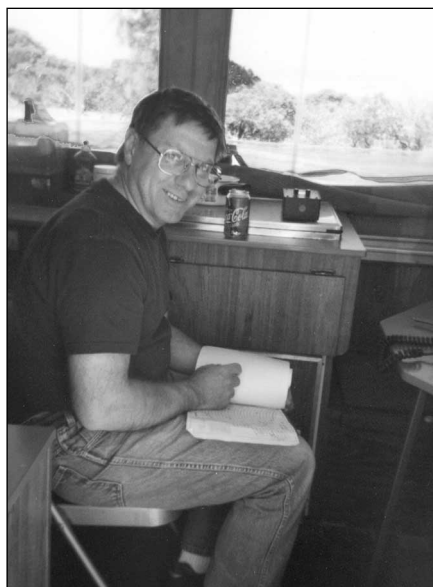
W2ODH/6	376,068	W3EP, K9AKS, W9IP
K3YTL	297,306	K1TEO, W2GKR, W2GKO, KA1FVG
W4IY	252,096	
W7XU	249,084	
AA4ZZ	150,920	
W5KFT	148,626	
AB2I	129,610	
K2BAR	120,032	
WB1GQR	119,992	
W3IP	101,508	

Rover

N3IQ	302,341	W2SZ/1, in Memory of Dick Goodman, WB1HIH
W3EKT	141,702	Wayne King, N2WK
AB4CR	134,656	Northern Lights Radio Society and WØUC
N1MJD	112,409	Southeastern VHF Society
K8WW	72,726	
K3QII	69,687	
W5DF	66,204	
W4VHF	60,701	
N4STK	59,254	
VE3NPB	55,483	



KB6WKT supervises deployment of the 432 MHz and 1.2 GHz arrays at the W6TOI site.



Dueling section managers: W6TLK of the SF section on the west coast operated W6MMM (left) while N1KAT of Maine ran on the East Coast (right).

also the new record for the New England Division.

K9PW now holds the Central Division single op mark with a score of 300,040, while the operators of K8GP broke the million-point barrier while setting a new Roanoke Division multioperator mark with 1,214,750 points. The Southwestern Division limited multi-operator record now belongs to the operators at W2ODH/6 with their score of 376,068. N3IQ's rover score of 302,241 now stands atop the Atlantic Division while N1MJD once again upped the New England Division rover score, this time breaking the 100k barrier at 112,409.

A Change for 2000

The year 2000 running of the June ARRL VHF QSO Party will see one sig-

nificant change. Starting in 2000, the single operator category is now split into high power and low power classifications. To qualify as low power, your output cannot exceed 200 W PEP on 50 and 144 MHz, 100 W PEP on 222 and 432 MHz, and 10 W PEP on 902 MHz and above. If you surpass the power limit on any band, your entry is classified as high power. We anticipate some exciting contesting battles between operators in the new power divisions to accompany the continued tough contests in the established categories. Make certain you read the revised "General Rules for ARRL Contests on Band Above 50 MHz" on page 106 in the November issue of *QST*. The rules are also found on the

contest Web page at: <http://www.arrl.org/contests>.

Participants are reminded that for an entry to be complete, you must submit both a completed summary sheet and complete log file. Also, your entry should be legible if done by hand. Take a few moments to send an SASE to the Contest Branch to request forms you need or you can download them from the contest Web page. Incomplete entries are classified as check logs.

In VHF/UHF/microwave contesting, one of the keys is the more bands you operate, the greater your score will be. If you look at the number of bands reported by the top scoring stations, you will see they utilize more bands than the average contester.

QSO Leaders By Band

Single Operator		144 MHz	222 MHz	432 MHz	902 MHz	1296 MHz
50 MHz		K1TEO 427	K1TEO 101	KE6GFF 205	K1TEO 41	K1TEO 54
N5JHV	467	K1UHF 330	K1UHF 90	K1TEO 161	K3DNE 27	K1GX 45
K5AM	439	K5MA 252	K3DNE 72	K1UHF 126	K1GX 26	WA2FGK 41
KØGU	406	WA3BZT 244	WA2FGK 72	K9PW 114	K1RZ 25	(K2LNS,op)
KB2ZVP	375	K9PW 231	(K2LNS,op)	K5MA 114	WA2FGK 25	K1UHF 41
N7ML	353	K1GX 224	K5MA 69	WA2FGK 113	(K2LNS,op)	K1RZ 38
W5UWB	321	WA2FGK 218	K1GX 68	(K2LNS,op)	K1UHF 25	K3DNE 34
K8LEE	300	(K2LNS,op)	N6HKF 67	N6HKF 105	K2UOP/8 25	K9PW 34
Multioperator						
50 MHz		144 MHz	222 MHz	432 MHz	902 MHz	1296 MHz
W2SZ/1	744	W2SZ/1 725	W2SZ/1 217	W2SZ/1 350	W2SZ/1 104	W2SZ/1 138
K8GP	674	K3MQH 717	W2UTH 204	K3MQH 294	W2UTH 97	W2UTH 106
W3CCX	610	W3CCX 608	K8GP 176	K8GP 273	K8GP 55	K8GP 64
K3MQH	589	K8GP 572	K3MQH 167	W2UTH 269	W3CCX 44	W3CCX 55
K2TVI	546	W2UTH 463	W3CCX 161	W3CCX 249	K3MQH 26	K1WHS 43
W2ODH/6 -L	499	WD3R 443	W2ODH/6 -L 160	W2ODH/6 -L 215	K2TVI 22	K3MQH 43
K3YTL -L	458	W4IY -L 436	W4IY -L 122	K3YTL -L 195	WW8M 20	W6MMM 42

-L denotes Limited multioperator

Multiplier Leaders By Band

Single Operator		144 MHz	222 MHz	432 MHz	902 MHz	1296 MHz
50 MHz		KØMQS 61	KE8FD 36	K1TEO 40	K1TEO 21	K3DNE 20
K5AM	172	KE8FD 61	K1TEO 35	KE8FD 37	K3DNE 17	KE8FD 20
N5JHV	170	K1TEO 51	K8TQK 34	K4QI 37	K1RZ 16	WA2FGK 19
KØGU	155	K8TQK 51	K3DNE 28	K9PW 36	K9PW 14	(K2LNS,op)
N7ML	127	NØKQY 50	K1UHF 28	WA2FGK 33	K2UOP/8 14	K8TQK 19
N5WS	122	WB9Z 49	WA2FGK 27	(K2LNS,op)	WA2FGK 14	K1TEO 19
W5UWB	119	K9PW 46	(K2LNS,op)	K3DNE 31	(K2LNS,op)	K1RZ 18
K1TOL	116		K9PW 27	VA3ST 30	KE8FD 13	K4QI 18
				KA1ZE 30	K8TQK 13	
Multioperator						
50 MHz		144 MHz	222 MHz	432 MHz	902 MHz	1296 MHz
W1XE	175	K8GP 76	K8GP 64	K8GP 58	W2SZ/1 31	W2SZ/1 34
W7XU -L	171	K3MQH 69	K3MQH 52	W2UTH 54	W2UTH 31	W2UTH 30
W5KFT -L	140	W2UTH 59	W2UTH 49	K3MQH 53	K8GP 27	K8GP 26
K8GP	128	W4IY -L 59	W4IY -L 43	W2SZ/1 48	K3MQH 12	WW8M 17
W2ODH/6 -L	124	W3CCX 59	K3YTL -L 38	K3YTL -L 46	W3CCX 12	K3MQH 17
WØUC/9	123	W7XU -L 58	W9ICE 38	W7XU -L 43	WD3R 12	W3CCX 16
WA7JTM -L	117	W2SZ/1 58	W3CCX 38	W3CCX 41	WW8M 11	W6TOI 14
			W2SZ/1 38	W4IY -L 41		

-L denotes Limited multioperator

In an attempt to encourage more participation on the higher UHF/microwave bands, the ARRL Technical Information Service has put together a new informational Web page. This page features downloadable information and reprints of articles from *QST*, *QEX* and other ARRL publications. You will also find an up-to-date bibliography and a list of links to sources that sell equipment and parts for UHF/microwave projects. This information will help you as you look for less expensive ways to in-

crease your band totals and QSO points on the higher bands. Thanks to the TIS and Lab guys for their work on this project. The Web site is <http://www.arrl.org/tis/info/uhf-mw.html>.

The June 2000 ARRL VHF QSO Party will be held June 10-12. Find a mountain top to try your hand as a QRP portable. Get your club together and plan to participate in the multi-op or limited multi-op class. Get out the grid square maps, overlay them on your road maps and plot out a rover

course that will maximize your efforts. Plan over the winter months how to improve your operation. Visit the TIS website and build a project that will add a band or two to your arsenal of weapons.

When you beat the challenges posed in VHF/UHF/microwave operations, you will feel the same rush you feel in completing the November Sweepstakes "Clean Sweep," or working the rare entity to move up to the DXCC Honor Roll. Being *heard* is good!

Scores

Each line score lists call sign, score, stations worked, multipliers, hours, number of grids activated (if Rover), and bands (A= 50 MHz, B = 144 MHz, C = 222 MHz, D = 432 MHz, 9 = 902 MHz, E = 1296 MHz, F = 2304 MHz, I = 10 GHz, J = 24G GHz, K = 47 GHz, P = 300+ GHz). Band leader indicators are listed in boldface type.

1		W1QK (+AA1MY,KA1SYG,K1XS,N1ABY,N1GS,N1TIV,N1TMG,W1QJ)	85,260	723	98	L	ABCD
Connecticut		Eastern Massachusetts					
K1TEO	378,658	103,212	663	122	S	ABCD	
K1UHF	220,160	66,924	466	99	S	ABCD9E	
K1GX	136,629	42,800	304	100	S	ABCDE	
W1COT	41,172	25,956	271	63	S	ABCD9E	
W2IIV	27,010	13,468	178	52	S	ABCDE	
N1NQD	24,820	3,782	69	31	S	AB	
NT1N	23,652	2,136	77	24	S	ABCD	
K1EM	14,460	1,824	59	24	S	BD	
N1JMM	12,582	1,136	65	16	S	ABD	
K1NGO	9,752	846	47	18	S	AB	
W1QJL	7,439	598	42	13	S	ABCD	
K1WVX	5,838	1,366	65	16	S	ABD	
W1WHL	5,032	846	47	18	S	AB	
K1KI	2,415	598	42	13	S	ABCD	
N1OPO	1,872	1,136	65	16	S	ABD	
KE1LE	342	846	47	18	S	AB	
WA1GTP	132	1,366	65	16	S	ABD	
W1QB	45,090	1,136	65	16	S	ABD	
K1ZE	29,220	846	47	18	S	AB	
NM1K	2,016	598	42	13	S	ABCD	
N1QVQ	286	1,136	65	16	S	ABD	
		Maine					
		N1RWY	39,292	334	94	S	ABCD
		K1TOL	34,104	294	116	S	A
		NY1E	19,435	299	65	S	A
		KQ1V	3,420	95	36	S	AB
		New Hampshire					
		K1TR	98,171	544	127	S	ABCD9E
		KU2A	34,320	301	78	S	ABCD9E
		WA1T	33,538	281	82	S	ABCDE
		WA1HOG	31,070	321	65	S	ABCDEI
		K2HZN	5,616	138	39	S	ABD
		AC1J	3,627	89	31	S	ABCD
		N1NUM	3,213	108	27	S	ABCD
		N1JHJ	2,754	87	27	S	ABD
		N1XOQ	2,208	86	32	S	ABD
		W1OA	1,562	64	22	S	ABCD
		Rhode Island					
		KM1X	38,614	383	86	S	ABD
		K8BGZ	1,944	80	24	S	ABD
		Vermont					
		W1AIM	15,022	162	74	S	ABCD
		Western Massachusetts					
		N1DPM	67,648	346	112	S	ABCD9EFG
		N1MUW	42,828	350	86	S	ABCDE
		WA1MBA	35,882	234	77	S	BD9EFGHI
		K1ISW	14,355	194	55	S	ABCD
		WA1UOZ	6,468	115	44	S	ABCD
		N1MHH	4,964	112	34	S	ABCD
		WA1NVV	2,185	115	19	S	B
		KC1OM	684	33	18	S	ABCD
		W2SZ/1 (+K1DH,K1EP,K2AD,K2TR,KBØWJO,KB2YQE,KC1ZN,KE2TP,KE4BF,N2BNY,N2GXH,N2HPA,N2NQI,N2XRE,N2ZVI,W1SZ,W1VE,W2ARQ,WA1ZMS,WA2AAU,WA2SPL,WS2B)	1,746,602	2554	394	M	ABCD9EFGHIJKL
		W1XX (+W1BYH,N1REK,N1RSX)	149,604	808	137	M	ABCD9E

2

Eastern New York

Table with columns for location, date, and status. Includes entries like W3HNN, W2FCA, K2ZZ, etc.

NYC-Long Island

Table with columns for location, date, and status. Includes entries like K2OV5, WA2ZFH, WB2CMI, etc.

Northern New Jersey

Table with columns for location, date, and status. Includes entries like WB2VVV, K2KIB, K2SIX, etc.

Northern New York

Table with columns for location, date, and status. Includes entries like KB2ZVP, WA2AEY, K3KYR, etc.

Southern New Jersey

Table with columns for location, date, and status. Includes entries like KD2KS, N2SJC, K1J1T, etc.

Western New York

Table with columns for location, date, and status. Includes entries like K2AN, W2VEV, N2ODU, etc.

3

Delaware

Table with columns for location, date, and status. Includes entries like W3OR, WA3BZT.

Eastern Pennsylvania

Table with columns for location, date, and status. Includes entries like WA2FGK, N3NGE, K3GNC, etc.

Table with columns for location, date, and status. Includes entries like W3CCX, N3OZO, W2SK, etc.

Maryland-DC

Table with columns for location, date, and status. Includes entries like K1RZ, K3DNE, K3ZO, etc.

Western Pennsylvania

Table with columns for location, date, and status. Includes entries like KA1ZE, KA3SDP, AA3GM, etc.

4

Alabama

Table with columns for location, date, and status. Includes entries like KU4UI, KU4WW, AJ4W, etc.

Georgia

Table with columns for location, date, and status. Includes entries like KD4HLG, KD4K, K4KAZ, etc.

Kentucky

Table with columns for location, date, and status. Includes entries like W4FVQ, KF4RAV, NA4JK, etc.

North Carolina

Table with columns for location, date, and status. Includes entries like K4QI, W4VHH, KE4DGI, etc.

Northern Florida

Table with columns for location, date, and status. Includes entries like NX4E, W2BZY, KE4YYD, etc.

Puerto Rico

Table with columns for location, date, and status. Includes entries like KP4IT, WP4LNY.

South Carolina

Table with columns for location, date, and status. Includes entries like KR4QO, N4UFP, K4AIR, etc.

Southwestern Florida

Table with columns for location, date, and status. Includes entries like WB2WIH, K0VXM.

Table with columns for location, date, and status. Includes entries like KF4KSN, N4BP.

Tennessee

Table with columns for location, date, and status. Includes entries like N8UM, NS4HW, KD4HK, etc.

Virginia

Table with columns for location, date, and status. Includes entries like W4RX, K4RTS, N4MM, etc.

5

Arkansas

Table with columns for location, date, and status. Includes entries like W5HUQ, W5ZN, N5FA, etc.

Louisiana

Table with columns for location, date, and status. Includes entries like WA5RTA, N5MYH, W5MVT, etc.

Mississippi

Table with columns for location, date, and status. Includes entries like KJ5RC, K5MLW, N3AWS.

New Mexico

Table with columns for location, date, and status. Includes entries like K5AM, N5JHV, K9RU, etc.

Oklahoma

Table with columns for location, date, and status. Includes entries like K5HP, W5AGO.

South Texas

Table with columns for location, date, and status. Includes entries like K5UIA, N5WS, W5UWB, etc.

West Texas

Table with columns for location, date, and status. Includes entries like KK5IH, KK5KK.

6

East Bay

Table with columns for location, date, and status. Includes entries like KF6GYM, W6OMF, KQ6DI, etc.

Los Angeles

Table with columns for location, date, and status. Includes entries like KQ6GW, N6KN, KE6FCT, etc.

Orange

Table with columns for location, date, and status. Includes entries like N6HKF, K6TSK, K6IBY, etc.

Pacific

Table with columns for location, date, and status. Includes entries like N6GYK, AH6TM, KH6HME, etc.

Santa Barbara

Table with columns for location, date, and status. Includes entries like N6PI, WB6AAG, KE6RCI, etc.

Santa Clara Valley

Table with columns for location, date, and status. Includes entries like W6GYD, N6JEU, N6LIU, etc.

San Diego

Table with columns for location, date, and status. Includes entries like KF6JBB, KD6FEQ, W6EBE, etc.

San Francisco

Table with columns for location, date, and status. Includes entries like WN6W, K6PZB, W6MMM, etc.

San Joaquin Valley

Table with columns for location, date, and status. Includes entries like N6AJ, K6VY, KM6WO, etc.

