

1999 ARRL 160-Meter Contest Results

Some call it “The Top Band.” Others refer to it as “The Gentleman’s Band.” All who play on the 160-meter band call it something magical. Propagation and conditions can make it a challenge to any that tune their radio to 1.8 MHz. It offers a wide array of challenges. Those like me who reside on small city lots often shy away from it because of the demands of space a good antenna require. The aficionados of the band go to great lengths to excel at the challenges it presents.

Some looked to the 1999 ARRL 160 Meter Contest, held the first weekend in December, as a way to find a few new ones on for their DXCC or WAS goals. Others viewed it as a chance to test their mettle against some of the finest our hobby has to offer. A total of 604 entries, representing a total of 720 hams across the US, Canada and from 22 DXCC entities, were received.

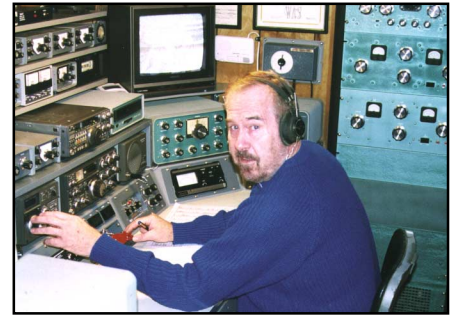
When the smoke cleared, and the log checking was finished (with thanks to K8CC and K9TM for their hard work in that area), it was no surprise to see Jeff, K1ZM, once again reigning as the Single Op High Power champion. Jeff showed no signs of letting up in this event, as he once again raised the New England division record, which now stands at 395,300 points. Jeff is a repeat winner from 1998. He easily outdistanced runner-up Jon, AA1K, who scored a great total of 295,210. The third place finisher Bob, W4MYA, set a new Roanoke division record with his 269,063 point total.

Gordon, WA1LNP, operating club call KB1EGB, paced the Single Op Low Power category with 171,535 points. Gordon jumps to the top after a third place finish in 1998. Bill, AA4GA, operating from W4WA, placed second in this category while setting a new Southeastern division record of 132,799. Jim, K1PX, finished a strong third with 129,040.

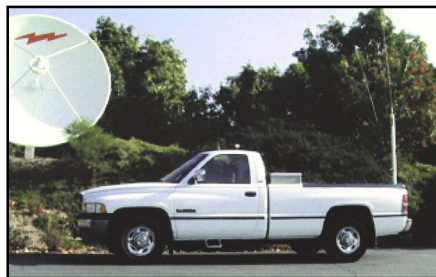
Dick, WK3I, combined the challenges of 160 meters with the demands of QRP to accumulate 70,776 points and win a relatively close contest against Jess, K8LJQ, in the Single Op QRP category. Dick is a repeat champion in the category from 1998. Jess’s 65,664 points were enough to set a new Great Lakes division record in this category. Dana, W3TS, finished a strong third. All total there were at least 14 of the 1998 Single Op Top Ten finishers that made a return trip to the boxes in 1999.



Ray, WA4KEJ, adjusting the inverted L tuning unit at the K4ZM station.



Charlie, W4TMR, and a wide assortment of QRP gear in his shack.



Don, KH6DX/6's, “mobile base” used a screwdriver antenna to make a respectable showing from the LAX section.

The top of the multi-op box isn’t a reprint of 1998 scores: it is a repeat performance by both the first and second place finishers. Leading the way again among some strong multi-operator entries were the team at W8JI with a final score of 295,704. K8XXX’s operators score of 236,964 was good enough to take second place overall, while K9NR’s efforts led to a third place finish. Congratulations to all of the participants.

The club scores also showed spirited competition among many of the top-contesting clubs. The Potomac Valley Radio Club fended off a challenge from the Frankford Radio Club to take top honors in the Unlimited Category 2,681,778 to 1,525,454. In the medium club category, the Society of Midwest Contesters held off the Yankee Clipper Contest Club 1,549,795 to 1,417,884. The Hudson Valley Contesters and DXers triumphed in the Local Category over the Central Texas DX and Contest Club 650,113, to 308,095. Congratulations to the gavel-winning clubs.

You will probably notice some reduction

Affiliated Club Competition

	Score	Entries
Unlimited Category		
Potomac Valley Radio Club	2,681,778	44
Frankford Radio Club	1,525,454	31
Medium Category		
Society of Midwest Contesters	1,549,795	20
Yankee Clipper Contest Club	1,417,884	27
South East Contest Club	807,879	8
Minnesota Wireless Assn	717,321	17
Rochester (NY) DX Assn	462,314	8
Tennessee Contest Group	375,486	12
Kentucky Contest Group	317,546	4
North Coast Contesters	298,144	7
Mad River Radio Club	278,833	5
Mile High DX Assn	212,905	4
Grand Mesa Contesters	162,738	3
Texas DX Society	147,505	3
North Texas Contest Club	132,840	3
Florida Contest Group	83,157	4
Southern California Contest Club	75,825	6
Western Washington DX Club	44,296	4
Mother Lode DX/Contest Club	40,005	3
Northern California Contest Club	37,785	4
Local Category		
Hudson Valley Contesters and DXers	650,113	5
Central Texas DX and Contest	308,095	6
West Park Radiops	21,864	3

Top Ten

Single Operator, QRP	Single Operator, High Power
WK3I 70,776	K1ZM 395,300
K8LJQ 65,664	AA1K 295,210
W3TS 45,472	W4MYA 269,963
N4ROA 34,692	W9LT 251,992
W4TMR 30,651	(at W8LRL)
N7IR 27,830	AA8U 212,220
N9NE 23,520	(W8MJ, op)
WA8RCN 22,231	KE9I 207,450
N4BP 21,805	K1VW 205,088
W9PNE 18,400	K9DX 204,336
Single Operator, Low Power	N4F 204,300
KB1EGB 171,535	W9RE 200,695
(WA1LNP, op)	Multioperator
W4WA 132,799	W8JI 295,704
(AA4GA, op)	K8XXX 236,964
K1PX 129,040	K9NR 206,115
K1KY 109,368	K2UG 202,752
K9AY 107,600	N1RR 189,600
K7CA 102,641	K3VW 179,000
K9OT 101,602	W0UCE 156,816
N0AT 98,842	W0AH 130,216
K4AO 97,090	WN9O 129,504
K3JT 90,798	K8FC 118,179

N3NT	30,750	303	50	C
N3HUV	29,925	331	45	C
K3MM	80,344	442	83	D
N3OC (+packet)	34,221	270	61	D

Western Pennsylvania				
AA3GM	10,200	150	34	A
WV3S	34,424	328	52	B
NA3V	18,146	211	43	B
AA3LX	14,100	150	47	B
K3MJW (KA3JWJ, op)				
NB4J	13,376	152	44	B
W3IA	11,610	135	43	B
WA3GQU	5,530	79	35	B
W3GH	45	9	5	B
K3MD	122,550	675	86	C
	94,217	656	71	C

4 Alabama				
W4DEC	3,050	61	25	A
K4ZM	2,254	49	23	A
K4KJP	700	25	14	A
K4WV	68,809	509	67	B
W4NTI	7,210	103	35	B
K4XR	69,642	468	73	C
AF4OD	39,780	306	65	C
KS4YT (+KV4T)	67,275	480	69	D

Georgia				
K4MJ	14,160	177	40	A
W4WA (AA4GA, op)				
K9AY	132,799	821	79	B
N4DU	107,600	647	80	B
K4BAI	29,376	303	48	B
K4EA	16,928	184	46	B
K4EA	138,591	762	87	C
W8JU (+WA4TT,N8VW)				
	295,704	1170	111	D

Kentucky				
K4AD	97,090	689	70	B
K4FDK	12,900	150	43	B
KC4WQ	9,680	121	40	B
W4PFDZ	7,480	110	34	B
N4AR	174,600	931	90	C
N4GN	36,176	320	56	C
K4JMN (+K2YJL,NAHT,WA4CET,K4IE)				
	64,052	472	67	D
KG4BIG (+KT4ZX)	22,313	209	53	D

North Carolina				
W4TMR	30,651	299	51	A
W2VMX	3,240	60	27	A
WJ9B	84,774	576	71	B
KS4J	47,432	416	56	B
K4JYS	29,484	225	63	B
KE4QZB	7,260	110	33	B
NA4F	204,300	906	100	C
N4XD	105,327	606	83	C
AA4S	45,175	334	65	C
N4UH	25,764	220	57	C
W0UCE (+packet)	156,816	935	81	D
K3KO (+packet)	101,634	635	78	D
W4MR (AA4NC,K4MA,K4HA, ops)				
	101,634	635	78	D

South Carolina				
W8PC	41,460	338	60	B
N1CC	1,440	36	20	B
AA4V	45,761	334	67	C

Southern Florida				
N4BP	21,805	215	49	A
K4CXX	5,644	83	34	B
W4OQ	20,706	174	58	C
K2OY	11,934	111	51	C
K4LQ	8,073	102	39	C

Tennessee				
K1KY	109,368	749	72	B
NA4K	52,864	445	59	B
N4ZI	39,600	360	55	B
W4DAN	31,605	321	49	B
K4AMC	13,038	159	41	B
W4NZ	12,546	153	41	B
W04O	12,276	138	44	B
AC4JI	11,520	144	40	B
N4PQV	11,076	142	39	B
WBJ3KQ	5,742	87	33	B
W4YGE	4,773	129	37	B
W4TDB	2,112	12	9	B
K4WV	48,240	402	60	C
K8EJ	28,404	263	54	C
K4RO	26,076	240	53	C
W9WV	23,300	233	50	C
W4CBX (+W4FXO)	80,230	553	71	D

Virginia				
N4ROA	34,692	354	49	A
AD4TJ	61,110	479	63	B
AB4I	36,840	301	60	B
W4YE	36,570	342	53	B
W4UQ	28,652	241	58	B
N4MM	17,950	175	50	B
K4ORD	17,673	204	43	B
W4HM	17,618	190	46	B
K4YT	12,480	156	40	B
W2YE	11,309	130	43	B
K4UK	6,936	102	34	B
N3ZYU	1,496	34	22	B
W4MYA	269,963	1156	103	C
K4IQ	151,962	837	86	C

K4OAQ	105,450	696	74	C
N4RV	56,525	298	85	C
N3JB	43,098	310	66	C
K4IX	14,592	152	48	C
K1GG	12,624	130	48	C
K4VV	12,432	148	42	C
K4UX	11,546	124	46	C
K4FOY	11,357	134	41	C
W4QDM (+packet)	29,328	312	47	D
N3RC (+packet)	9,553	115	41	D
W4HZ (+packet)	3,875	58	31	D

5 Arkansas				
KJ5WX	37,721	277	67	B
W5HUQ	33,096	294	56	C
W5KL	5,530	79	35	C

Louisiana				
K5MC	32,142	242	66	C
W5WMU	19,344	200	48	C
W5DDX (WM9M,W5FKX,WDBLLR, ops)				
	76,516	511	74	D
W5OT (WA5TWL, op) (+packet)				
	31,436	271	58	D

Mississippi				
AB5YY	11,200	140	40	B
WA5NYG (+AB5XP,KC5FQZ,KD5GGC)				
	25,245	228	55	D

New Mexico				
W5JRP	7,380	90	41	A
W6PU	79,500	524	75	C
N5UL	31,124	248	62	C
N6ZZ	18,179	178	49	C

North Texas				
W8UO	86,260	560	76	B
W5CWQ	16,362	147	54	B
W5KS	8,930	116	38	B
K5SS	2,912	52	28	B
K5RX	41,795	314	65	C
N5KB	4,785	71	33	C

Oklahoma				
K5HP	65,205	471	69	C
N5OT	19,764	183	54	C
NA5B (+W5AO,K3LR)				
	71,250	466	75	D

South Texas				
K4NR	16,416	149	54	B
AF5Z	11,088	123	44	B
N5AFV	4,356	66	33	B
K5TR	598	23	13	B
K5NA	135,124	796	83	C
N5CQ	70,445	472	73	C
K5XR (W5ASP, op)				
	57,368	404	71	C
K5NZ	37,076	296	62	C
AD5AA	7,600	100	38	C
NA4M	2,064	43	24	C
N5TW	88,776	609	72	D
K5UIA (+WA5SNL,WA4TQS,K5QLP)				
	53,061	371	69	D

West Texas				
NV5S	2,256	47	24	A
N5DO	15,768	143	54	B
NZ5M	50	5	5	B

6 East Bay				
N6WG	6,120	126	24	A
WA2BHJ	2,750	61	22	B
KE6QR	1,872	52	18	B
K6TS	12,455	131	47	C

Los Angeles				
KU6T	1,843	47	19	A
W6ZH	1,106	38	14	A
K0INT	10,767	144	37	B
W6LX	4,602	87	26	B
N6GL	4,378	98	22	B
K6ASK	240	15	8	B
KH6DX	57,456	366	76	C
N6ED	16,146	204	39	C
KQ6ES	13,377	170	39	C
W7RF	8,052	90	44	C
N5BF	2,000	50	20	C
W6YRA (WA6AYI,KC6LDO,AC6YV, ops)				
	36,660	301	60	D

Orange				
N6BM	15,752	176	44	B
N6CMF	15,394	176	43	B
N6HC	5,852	103	28	B
W6OZ	897	69	13	B
N6PE	21,168	196	54	C

Pacific				
KH7R (KH6ND, op)	85,701	510	77	C

Santa Barbara				
W6VM	13,005	143	45	B
W6WQC	5,330	101	26	B
W6ND	5,049	153	33	B
W6JEO	2,147	55	19	B
W7CB/6	26,660	206	62	C
N6KB (+KF6TQI,K6SU,Y,WB6YPR)				
	45,500	307	70	D

Santa Clara Valley				
KB6FPW	2,205	51	21	A
N6NF	42,640	325	65	B
K6GL	4,560	76	30	B
K6MO	20,500	193	50	C
K6XX	10,277	112	43	C
K6III (+packet)	2,448	68	18	D

San Diego				
W8QZA/6	528	21	11	A

San Joaquin Valley				
K6MI	3,456	54	32	A
WA6YEE	19,826	214	46	B
KE6Y	7,004	100	34	B
WA6FGV	3,363	87	19	B
KI6PG	2,136	43	24	B
K6SE	68,941	469	71	C

Sacramento Valley				
W6UT	26,100	258	50	B
W6RKC	13,005	143	45	B
N6AFI	1,056	33	16	B
NE6JV	55,964	395	68	C
NR6K	26,488	232	56	C
K6DB	24,864	216	56	C
W6AW (+WB6RVR,K6PW,W6AGUI, K6LQ)				
	39,710	349	55	D

7 Arizona				
N7IR	27,830	247	55	A
KJ7WVY	8,604	118	36	A
N7VY	3,564	66	27	A
AC7A	27,360	234	57	B
K7NU(WA2DFI, op)				
	20,470	216	46	B
NN7A	18,768	172	51	B
N7GP	115,419	693	79	C
N6SS	92,264	577	76	C
W7YS	27,405	204	63	C
K7ON	16,942	194	43	C
W7ZT	2,184	44	24	C

Eastern Washington				
W7UB	30,030	273	55	C

Idaho				
W7UQ (K7TQ, op)				
	2,256	47	24	A
W7XG	24,539	230	53	B
K8TO	9,040	113	40	B
KK7A	3,712	64	29	B
KG7H	72,150	475	75	C

Montana				
AB7CE	864	24	18	A
K7BG	54,250	386	70	C
K9QVB (+K9PG)	40,016	325	61	C

Neveda				
KU7Y	18,377	194	47	A
N7PU	22,568	200	56	B
NW7O	2,530	56	22	B

Oregon				
W7GG	71,496	486	72	C
K7AW (K5ZM, op)				
	9,890	115	43	C
K7RAT (K7EW,K7NT,W7NX,N6TR, ops)				
	89,096	578	74	D

Utah				
WA7LNW	7,075	140	25	A
K7CA	102,641	656	77	B
W7HS	23,705	214	55	B
K8EI	6,432	99	32	B
K07X	11,836	133	44	C
WA7ADK	10,878	128	42	C
N57K (+NS7B,N6GDS,KB7RUQ, W0YSE)				
	24,336	231	52	D

Western Washington				
W7RM (KI7Y, op)				
	71,568	467	72	B
K7QK	50			