

# Making A Station Location

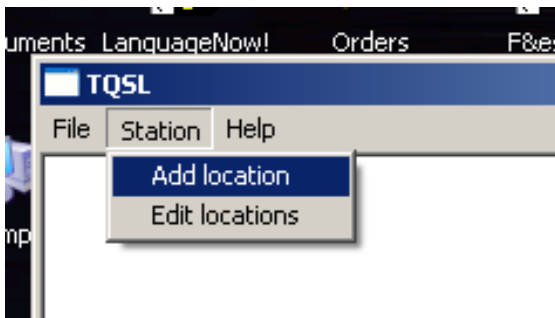
Now that you have your electronic certificate you can now sign and upload your logs to Logbook of The World. The first step in the signing process is to create a *Station Location*. Your station location contains the geographic information about your station. Information such as zones, grid squares, IOTA numbers and US States and Counties are included in your station location.

The information in your station location is how the other operator receives credit for things like your US State, County, zones, etc therefore it is very important that this information be complete and accurate.



Tqsl.Ink

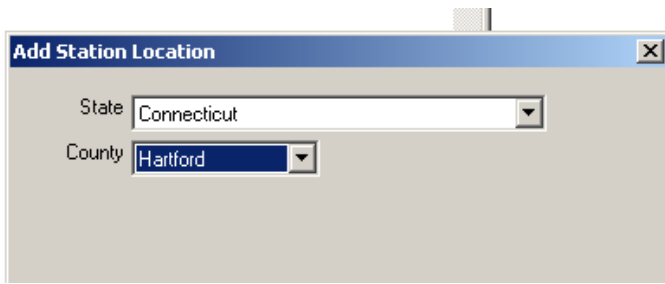
1. Open TQSL
2. Select ADD STATION LOCATION



3. Enter all of the information for the location of your operation and click next.

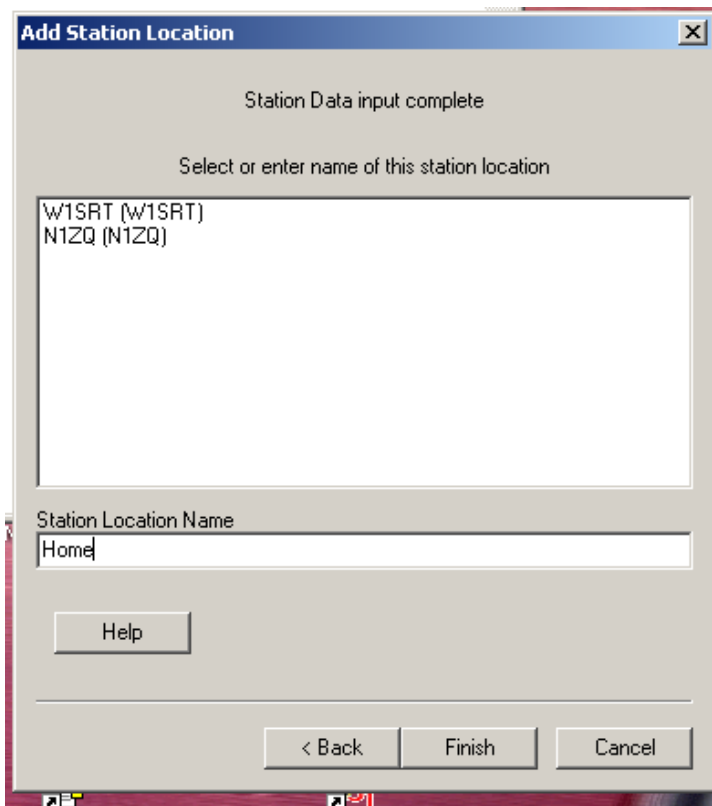
A screenshot of the 'Add Station Location' dialog box. The fields are filled with the following information: Call Sign: N1ZQ, DXCC Entity: UNITED STATES OF AMERICA, Grid Square: FN31MQ, ITU Zone: 8, CQ Zone: 5, and IOTA ID: (empty). There is a 'Help' button and navigation buttons '< Back', 'Next >', and 'Cancel' at the bottom.

4. US Callsigns will get drop down menus to select a State and County.



The screenshot shows a dialog box titled "Add Station Location". It contains two dropdown menus. The "State" dropdown menu is set to "Connecticut" and the "County" dropdown menu is set to "Hartford".

5. The final step is naming the station location. Once you have entered the station location name ("Home" in the example), click FINISH.



The screenshot shows the "Add Station Location" dialog box at a later stage. The text "Station Data input complete" is displayed at the top. Below it, the instruction "Select or enter name of this station location" is shown. A list box contains two entries: "W1SRT (W1SRT)" and "N1ZQ (N1ZQ)". Below the list box is a text input field labeled "Station Location Name" containing the text "Home". At the bottom of the dialog box, there are three buttons: "Help", "< Back", "Finish", and "Cancel".