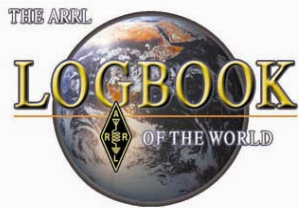


THE ARRL

# LOGBOOK



OF THE WORLD

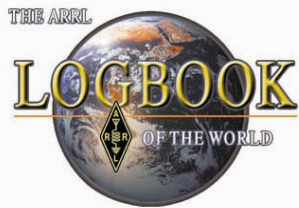


# What is Logbook of The World?

ARRL's *Logbook of the World* (LoTW) system is a repository of log records submitted by users from around the world.

The screenshot shows a window titled "Log -- main" with a toolbar and a table of log records. The table has columns for Call, Date, On, Band, Mode, RST, RST rc, QSL, QSL rc, Name, Qth, and St. The row for DU2FE is highlighted in yellow.

Call	Date	On	Band	Mode	RST	RST rc	QSL	QSL rc	Name	Qth	St
WN4AZY	03-12-200	23:52:22	10M	USB	59	59					
KE2X	03-12-200	23:52:30	10M	USB	59	59			Eun	Houston	T
N6MRQ	03-12-200	23:52:56	10M	USB	59	59	F	F	Fe	Auburn	G
DU2FE	10-12-20	23:30:09	20M	USB	59	59	R		Gil	Cavite	
K2AAA	11-12-200	15:41:41	10M	USB	59	59					
WN4AZY	11-12-200	18:59:19	10M	USB	59	59			Dennis	Auburn	G
K2AA	12-12-200	03:48:58	10M	USB	59	59					
WB4NWP	13-12-200	23:35:38	10M	USB	59	59			Michael	Farmville	V



# What is Logbook of The World?

When both participants in a QSO submit matching QSO records to LoTW, the result is a QSL that can be used for ARRL award credit.



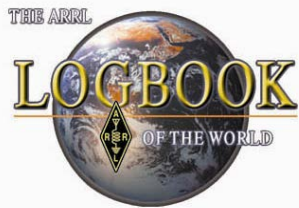
# What is Logbook of The World?

*Logbook of the World* can accommodate every possible user scenario.

- Home
- Portable
- Mobile
- Maritime
- QSL Managers
- DXpedition or whatever,



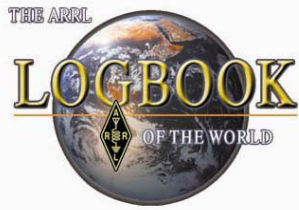
LoTW can be setup to properly process your logs and match QSOs for all of your operations.



# Is LoTW Secure?

To minimize the chance of fraudulent submissions to LoTW, all QSO records must be digitally signed using a digital certificate obtained from ARRL.





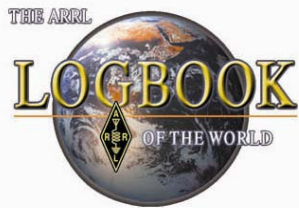
# What about software?

LoTW uses software called TQSL.  
TQSL is free to download and use.

TQSL works with:

- MS Windows
- Mac OS X
- Linux





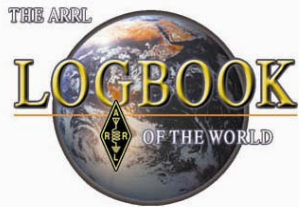
# How much does it cost?

Logbook of The World is **FREE** to all radio amateurs around the world.

Membership in ARRL is not required.

Users may upload logs and view data anytime with no charges or fees.



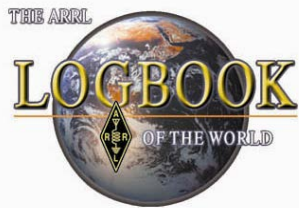


# What About Application Fees?

When applying for awards users pay the appropriate application fees and QSO fees.

This is no different than when making a paper application for an award.

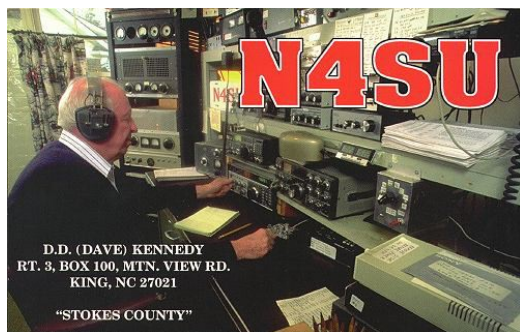


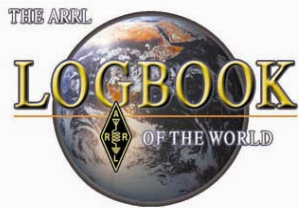


# What About QSL Cards?

LoTW does not replace QSL collecting.

ARRL QSL Bureau is still a member benefit.



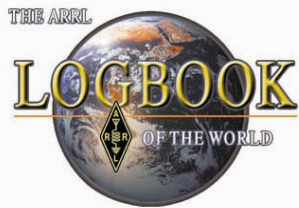


# What About QSL Cards?

LoTW saves money and time.

- No postage or IRCs.
- No QSL card printing expense.
- No waiting for QSL cards



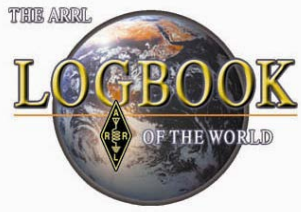


# How is LoTW different than e-QSL or other online QSL services?

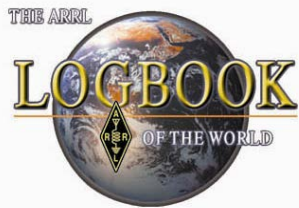
Because LoTW uses private key and public key technology, users are verified and data uploaded to the system is secure.

LoTW is constantly comparing uploaded data for matches.

There are no paper cards printed that have the potential to be altered.



What can I do with LoTW?



# What can I do with LoTW?

Account Status					
DXCC Award	New LoTW QSLs	LoTW QSLs in Process	DXCC Credits Awarded	Total (All)	Total (Current)
<a href="#">Mixed</a> *	2	0	300	302	297
<a href="#">CW</a> *	5	0	253	258	255
<a href="#">Phone</a> *	0	0	257	257	253
<a href="#">Digital</a> *	2	0	111	113	113
<a href="#">160M</a>	0	0	52	52	51
<a href="#">80M</a> *	1	0	124	125	123
<a href="#">40M</a> *	1	0	188	189	187
<a href="#">30M</a>	2	0	67	69	69
<a href="#">20M</a> *	3	0	244	247	245
<a href="#">17M</a>	4	0	86	90	90
<a href="#">15M</a> *	2	0	206	208	206
<a href="#">12M</a>	4	0	34	38	38
<a href="#">10M</a> *	2	0	167	169	166
<a href="#">6M</a>	0	0	1	1	1
<a href="#">Challenge</a> *	19	0	1157	---	1176
<a href="#">5-Band</a> *	---	---	---	---	---

\* = Award has been issued

[View Award Credit Matrix](#)

- Apply for awards
- Track DXCC credits
- View DXCC Matrix
- Track WAS Credits
- Search QSOs and QSLs
- View QSL Details



## TQSL 2.0

***TQSL*** is the software that ***Logbook of The World*** users install at their location to securely upload logs to Logbook of The World.

***TQSL*** is free to download and use.



# TQSL 2.0

The ***TQSL*** software is downloadable from the web at:

[www.arrl.org/TQSL-Download](http://www.arrl.org/TQSL-Download)

***TQSL 2.0*** Works with all supported versions of MS Window OS.



# TQSL 2.0

***TQSL 2.0*** is also available for Mac OSX.

***TQSL 2.0*** for Linux is supported by the Linux community.





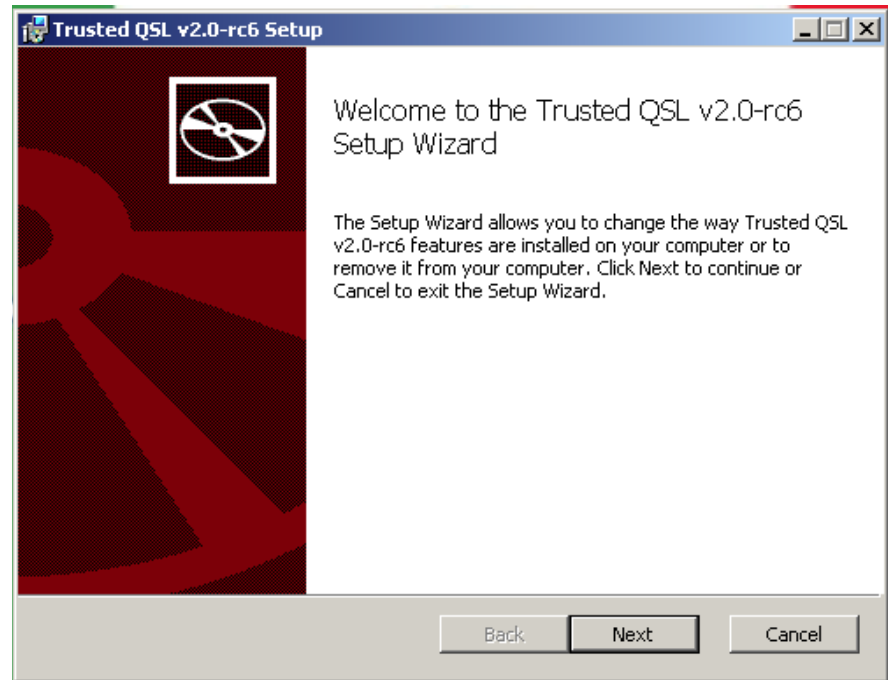
# TQSL 2.0

***TQSL*** automatically checks for updates in the software or configuration files.



# TQSL 2.0

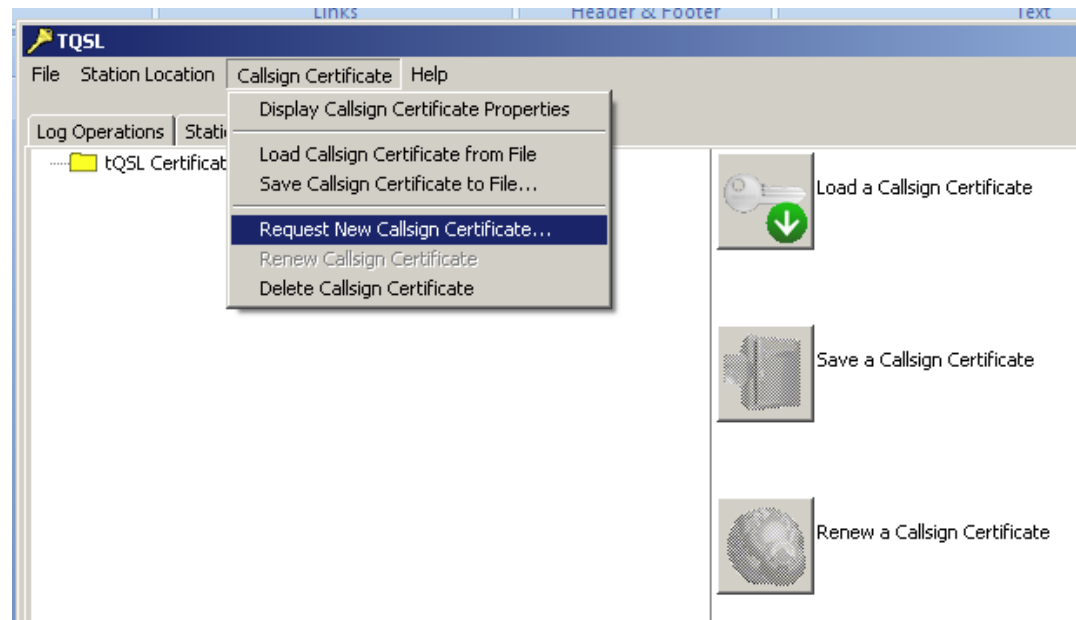
***TQSL*** uses a standard  
Windows installer





# TQSL 2.0

The next step is to request a  
***Call Sign Certificate?***



**Excuse me.**

**I have a question.**



# TQSL 2.0

*Why do I need TQSL software?*

*What is a Call Sign Certificate?*

*Why do I need this to send my logs to LoTW?*





## TQSL 2.0

Logbook of The World only accepts  
***Trusted files.***

Trusted files are created by ***TQSL.***

***TQSL*** uses the Call Sign Certificate to electronically sign the Trusted file.



# TQSL 2.0

Types of Trusted files:

**TQ 5** - Request for a Call Sign Certificate.

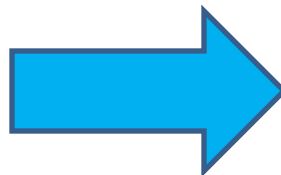
**TQ 6** – Response to a **TQ5** request.

**TQ 8** – Signed log file.



# TQSL 2.0

Sending a secure log file is like sending your log in a locked box.







# TQSL 2.0

TQSL is the software that locks the box and sends it to LoTW.





# TQSL 2.0

This is why the TQSL icon is a key.





# TQSL 2.0

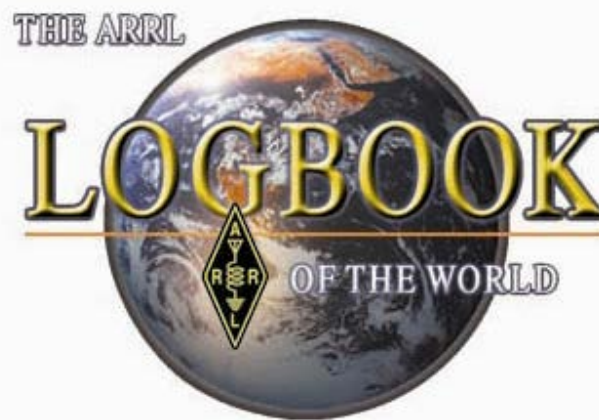
The Call Sign Certificate encrypts the log file and acts as the lock.





## TQSL 2.0

When your locked file is received  
at LoTW...





## TQSL 2.0

... we use the same key to unlock the “box” that was used to lock it at your location.





# TQSL 2.0

The keys and the locks must match or the file cannot be opened.





## TQSL 2.0

This is a *very simplified* illustration of public key - private key technology.



# TQSL 2.0

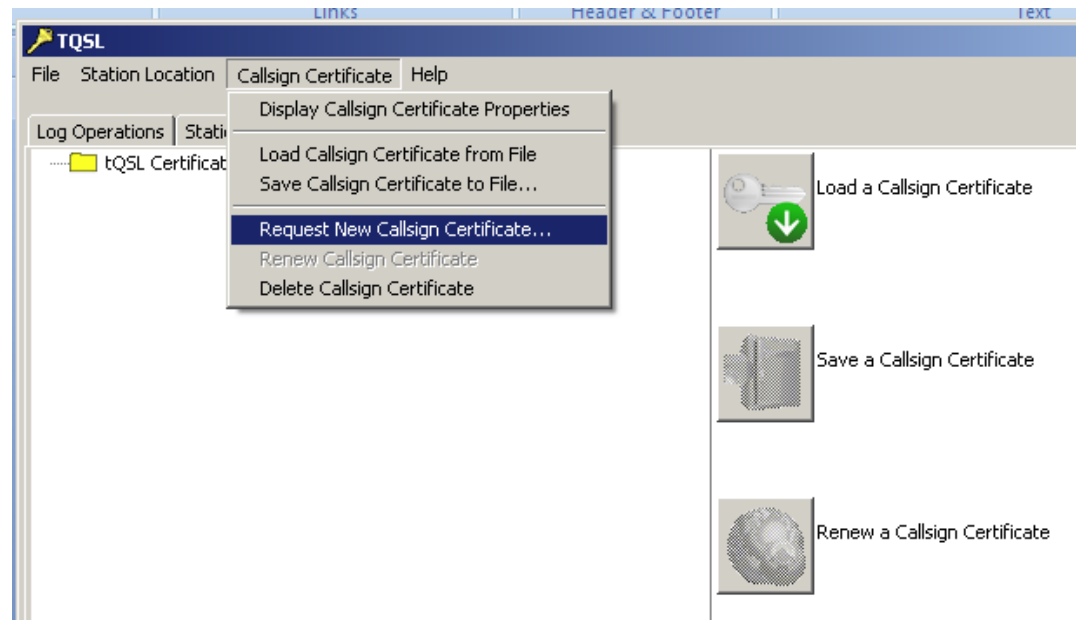
## Let's continue...





# TQSL 2.0

The next step is to request a  
***Call Sign Certificate?***





# TQSL 2.0

This is nothing more than filling out a form.  
Name, address, call sign, e-mail...

The image displays three sequential screenshots of the TQSL 2.0 software interface, illustrating the process of requesting a new Callsign Certificate.

**First Screenshot: Request a new Callsign Certificate**

This window shows the initial form with the following fields:

- Call sign:  (indicated by a red arrow)
- DXCC entity:  (indicated by a red arrow)
- QSO begin date:

**Second Screenshot: Generate Certificate Request**

This window shows the personal information fields:

- Name:
- Address:
- City:
- State:
- Zip/Postal:
- Country:

**Third Screenshot: Generate Certificate Request**

This window shows the email address field:

- Your e-mail address:

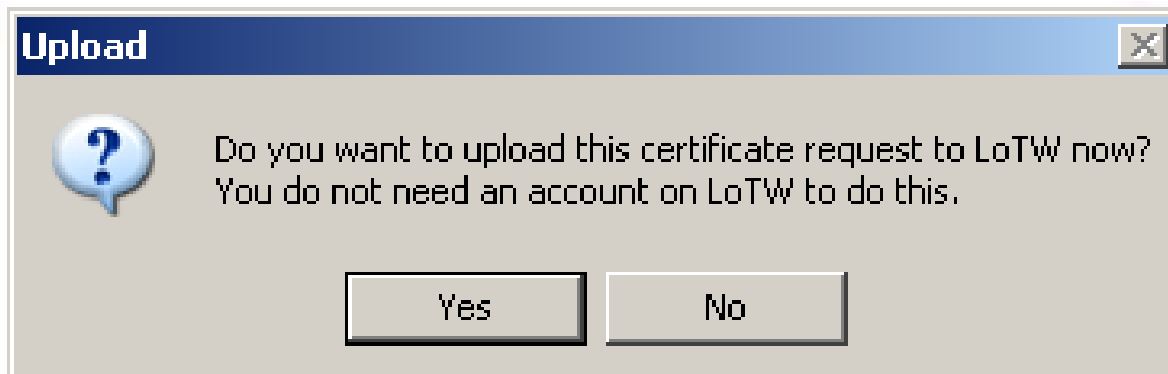
**Notes:**

- A red arrow points from the "Call sign" field in the first screenshot to the "Name" field in the second screenshot.
- A red arrow points from the "DXCC entity" field in the first screenshot to the "Country" field in the second screenshot.
- A note in the third screenshot states: "Note: The e-mail address you provide here is the address to which the issued certificate will be sent. Make sure it's the correct address!"



# TQSL 2.0

The TQSL program will offer to send your call sign certificate request for you.





## TQSL 2.0

After your request is processed at ARRL you will receive your **TQ6** response.

Accepting your **TQ6** file is a simple mouse click.



# TQSL 2.0

The TQ 6 response is specific to the TQ 5 request.

Only the key that made the **TQ5** request can unlock the **TQ6** response





# TQSL 2.0

Because the **TQ5** and **TQ6** are a matched set the request and acceptance must be performed from the same computer.





## TQSL 2.0

*So, I can only use this on one computer?*

*Using the back and restore utilities in TQSL the configuration can be transferred to other computers.*

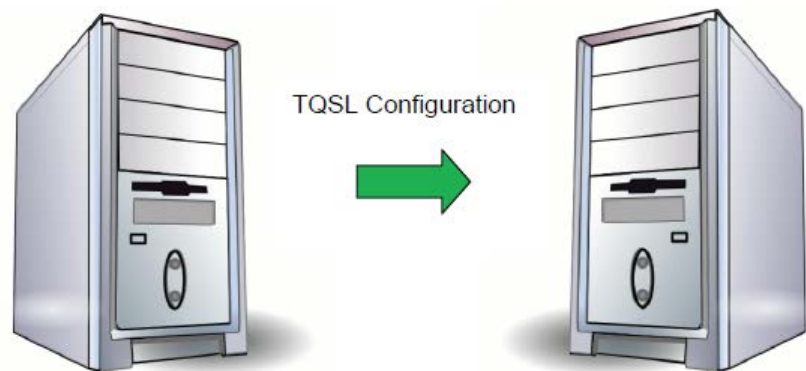


# TQSL 2.0

## Backup and Restore

After you have configured TQSL with a certificate and station locations you can ***backup your configuration*** and move it to another computer.

This is a simple process involving a few clicks of your mouse.

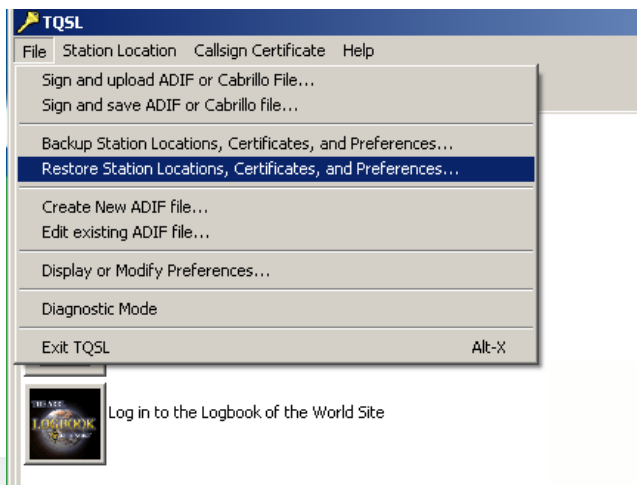






# TQSL 2.0

## Backup and Restore

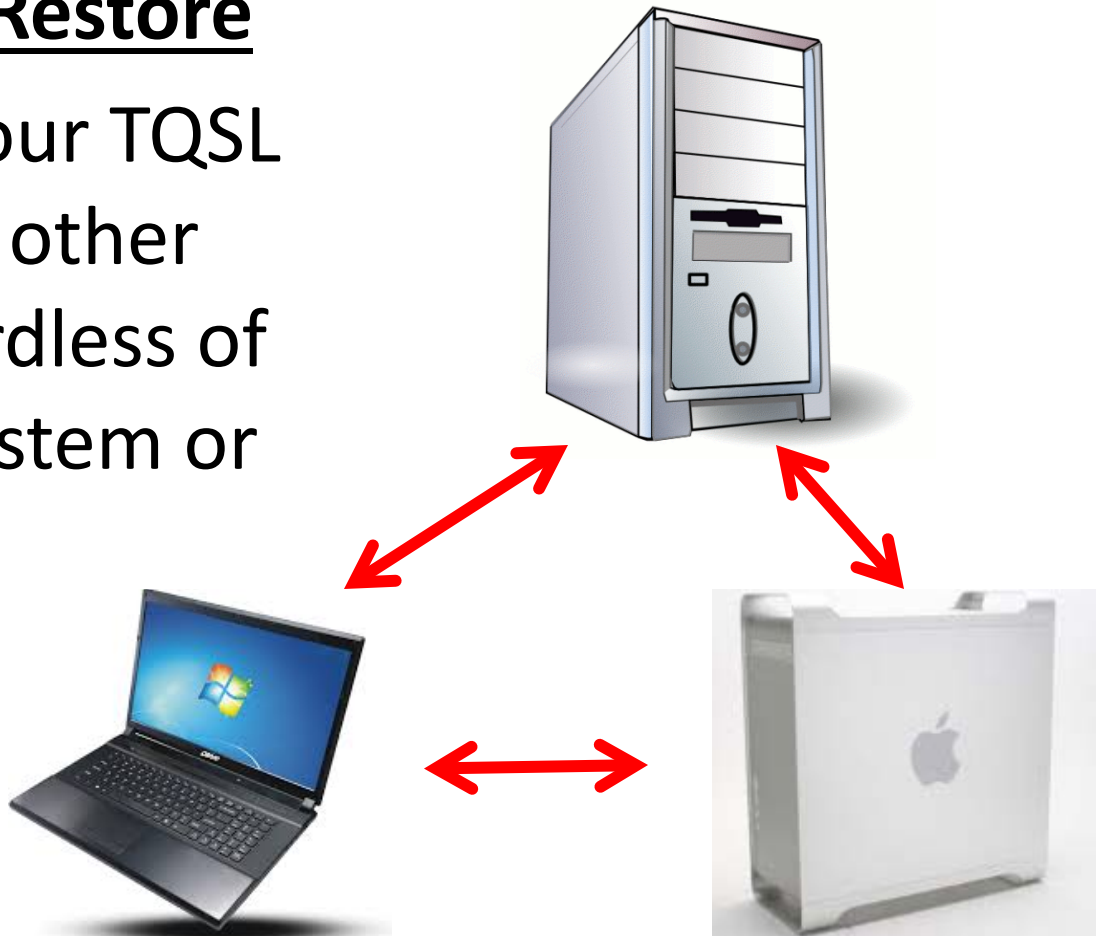




# TQSL 2.0

## Backup and Restore

You can move your TQSL configuration to other computers regardless of the operating system or platform.





## TQSL 2.0

**But wait a minute.**

***Why do I hear about receiving  
a postcard in the mail?***



## TQSL 2.0

When you request a Call Sign Certificate you are requesting a key.





## TQSL 2.0

The request is authenticated  
before sending the key.



## TQSL 2.0

Authentication is only required when you are creating a new Logbook of The World user account.



# TQSL 2.0

## Authentication

### US Operators

Will receive a postcard mailed to their address listed in the FCC database.

### Non-US Operators

Must mail a copy of their operator permit and identification (numbers blacked out) to ARRL



# TQSL 2.0

## Let's continue...





# TQSL 2.0

## Station Locations

In addition to placing an electronic signature on your log file TQSL also adds your geographic information to the Trusted file.

Station locations are associated with your certificate.



# TQSL 2.0

## Station Locations

Geographic information can include US States counties, provinces, grid squares, CQ and ITU zones, IOTA, etc.



# TQSL 2.0

## Station Locations

You can make as many station locations as needed to accommodate your operations.

This is great for grid or county activations.



# TQSL 2.0

## Recap

LoTW only accepts *Trusted files*.

***TQSL*** is the software that creates Trusted files.



# TQSL 2.0

## Recap

The Call Sign Certificate request and acceptance must be performed from the same computer.

Geographic information is managed through ***Station Locations***.



# TQSL 2.0

## Recap

TQSL configuration can be moved to a second computer using the ***backup and restore*** functions.



# TQSL 2.0

## The TQ 8 File

A TQ 8 file is a signed (encrypted) log file that gets uploaded to LoTW.

TQSL creates the TQ8 and uploads it to LoTW.



# TQSL 2.0

**Let's look at a TQ8 file.**

Your call sign and DXCC entity are embedded in your certificate.





# TQSL 2.0

**Let's look at a TQ8 file.**

The QSO information is in your ADIF or Cabrillo log file.

- call sign of station worked
- date
- time
- band
- mode



# TQSL 2.0

Let's look at a TQ8 file.

The geographic information is managed in your ***Station Locations***.

- US State
- County
- Grid square
- ITU and CQ Zones



# TQSL 2.0

## Let's Get Started