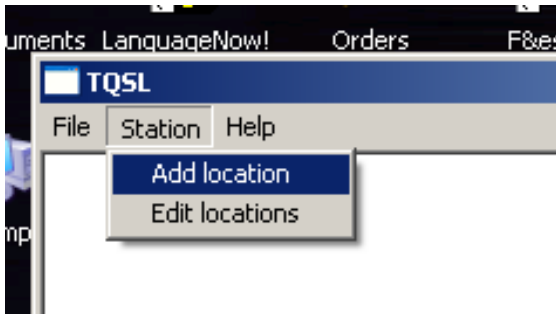


Signing and Uploading Logs

Now that you have your electronic certificate you can now sign and upload your logs to Logbook of The World. The first step in the signing process is to create a *Station Location*. Your station location contains the geographic information about your station. Information such as zones, grid squares, IOTA numbers and US States and Counties are included in your station location.



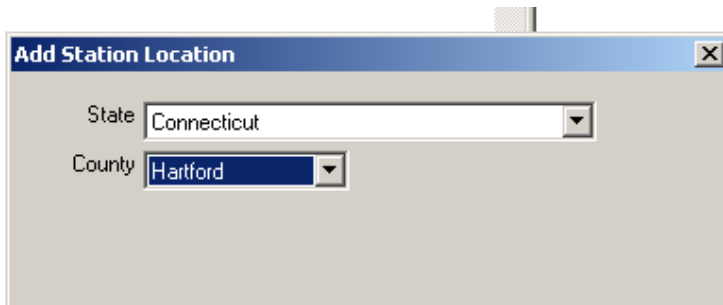
1. Open TQSL Tqsl.Ink
2. Select ADD STATION LOCATION



3. Enter all of the information for the location of your operation and click next.

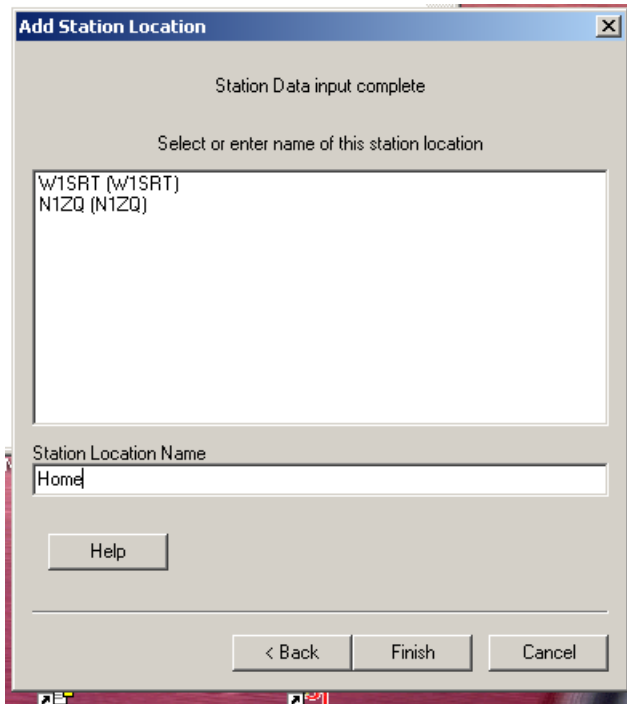
A screenshot of the 'Add Station Location' dialog box. The dialog contains several input fields and dropdown menus. The 'Call Sign' field is set to 'N1ZQ', 'DXCC Entity' is 'UNITED STATES OF AMERICA', 'Grid Square' is 'FN31MQ', 'ITU Zone' is '8', and 'CQ Zone' is '5'. The 'IOTA ID' field is empty. At the bottom, there are three buttons: 'Help', '< Back', and 'Next >', and a 'Cancel' button.

4. US Callsigns will get drop down menus to select a State and County.



The screenshot shows a dialog box titled "Add Station Location" with a close button (X) in the top right corner. It contains two dropdown menus. The "State" dropdown menu is set to "Connecticut" and the "County" dropdown menu is set to "Hartford".

5. The final step is naming the station location. Once you have entered the station location name ("Home" in the example), click FINISH.

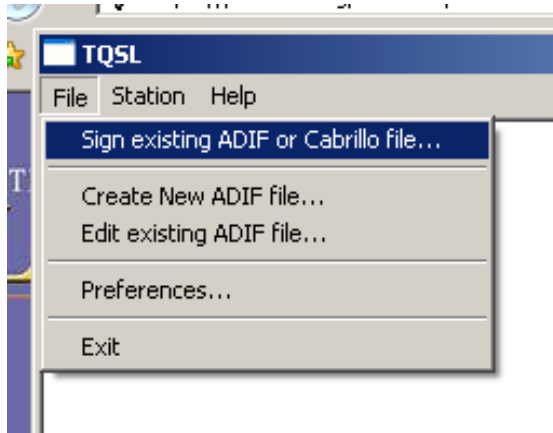


The screenshot shows the "Add Station Location" dialog box at a later stage. The title bar and close button remain. The main area contains the text "Station Data input complete" and "Select or enter name of this station location". Below this is a list box containing two entries: "W1SRT (W1SRT)" and "N1ZQ (N1ZQ)". Below the list box is a text input field labeled "Station Location Name" containing the text "Home". A "Help" button is located below the input field. At the bottom of the dialog are three buttons: "< Back", "Finish", and "Cancel".

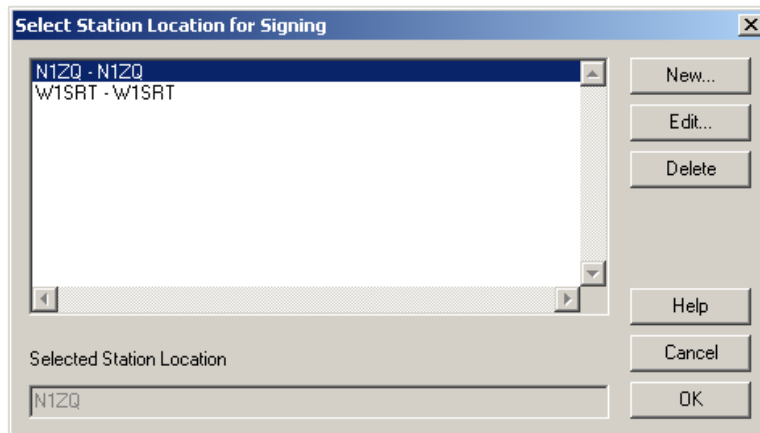
Signing Your Log

This step assumes that you have exported an ADIF or Cabrillo log file from your logging program. Some of the more popular logging software programs will perform these next steps for you.

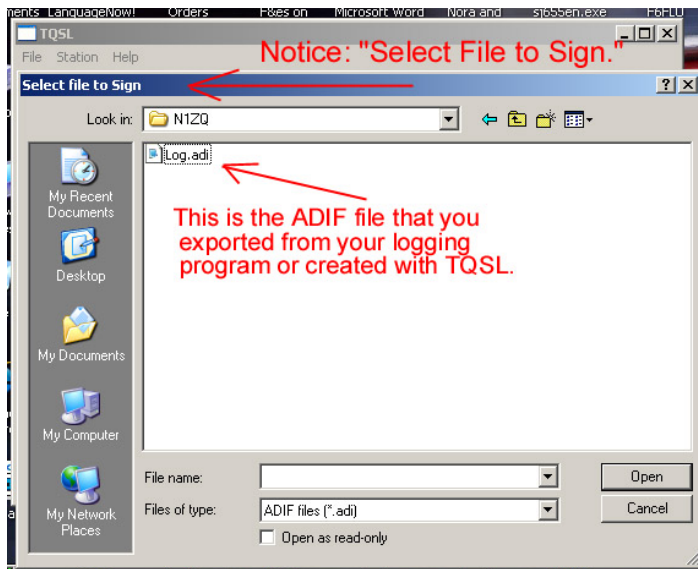
1. Select FILE > SIGN EXISTING FILE



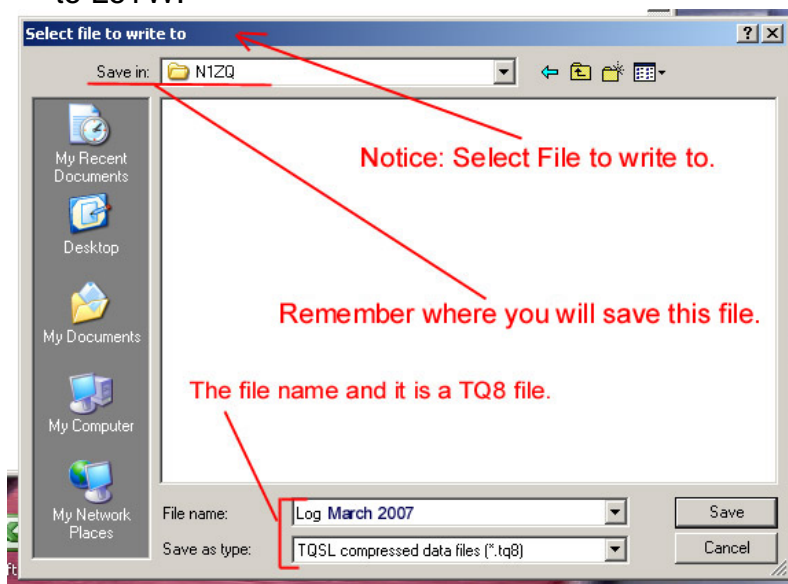
2. Select a station location to use for signing your log. Highlight (left click on the call) the location and click OK



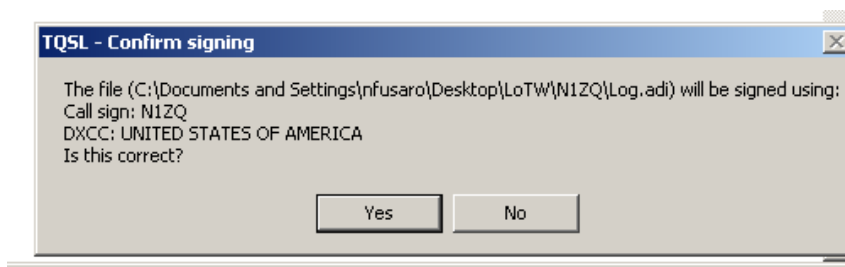
3. Select the log file to sign. Click OPEN. You should use a different name for each file to help you keep track.



4. Next you will select the file to write to. When you electronically sign your log you will have created a TQ8 file. This is the secure file that will be uploaded to LoTW.



5. You will be asked to confirm the signing. If you have more than one callsign in your system be sure that the correct call is being used to sign the log.



6. You have the option of entering a date range for QSOs to be uploaded. You can leave either (or both dates) blank. If duplicate information is uploaded the most recent upload will override the previous upload.

It is a good practice to enter the beginning date as the last date you uploaded to LoTW.

JXLL=291

QSO Date Range

You may set the starting and/or ending QSO dates in order to select QSOs from the input file.

QSOs prior to the starting date or after the ending date will not be signed or included in the output file.

You may leave either date (or both dates) blank.

Start Date (YYYY-MM-DD)

End Date (YYYY-MM-DD)

7. You will see the system converting your log to TQSL format and then you will get a message that the TQ8 file is ready to be uploaded.

8. Log onto the LoTW website <https://p1k.arrl.org/lotwuser/default>

9. Select the UPLOAD FILE tab.

lotw-logs@arrl.org' and 'Copyright 2007 American Radio Relay League, Inc. All Rights Reserved'."/>

10. Use the browse button to locate and select your TQ8 file to upload.
11. Click the upload file button to upload the file. If done correctly you will receive a message that the file is queued for processing.

If you receive a message like this:

[FILE] does not appear to be a TrustedQSL file! Processing aborted.

The chances are that you selected your log ADIF file to upload or some other file that is not a TQ8 file.

**Thank you for using
Logbook of The World**