

Upgrading Trusted QSL 1.14.x

Upgrading from previous versions of Trusted QSL to the newest version TQSL 1.14.3 is a simple process.

- You do not need to uninstall your current version of Trusted QSL in most cases. the TQSL 1.14.x installer will do that for you.
- Do not delete any files or folders associated with Trusted QSL unless directed by ARRL staff.

The new Trusted QSL software has an uninstaller built into the software and will delete any unnecessary files from the older versions. With just a few clicks of your mouse you can install the newest version of Trusted QSL.

Begin:

1. Go to Select the TQSL program for your operating system.

[MS Windows - click here](#)

- Trusted QSL software is compatible with all versions of the Windows operating systems that Microsoft is currently supporting.

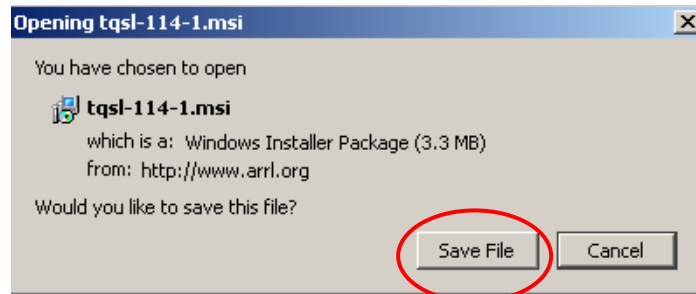
[Mac OSX - click here](#)

- Universal binary for PPC and Intel processors; OS X versions 10.4 and later.

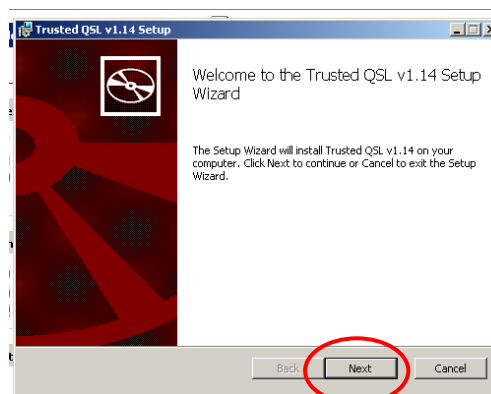
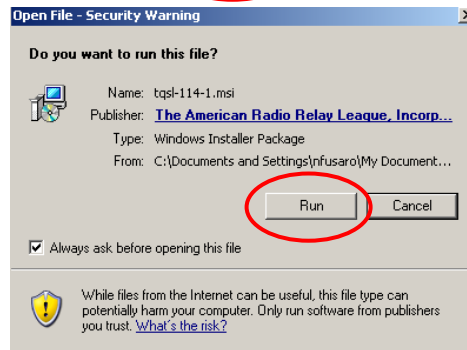
Linux

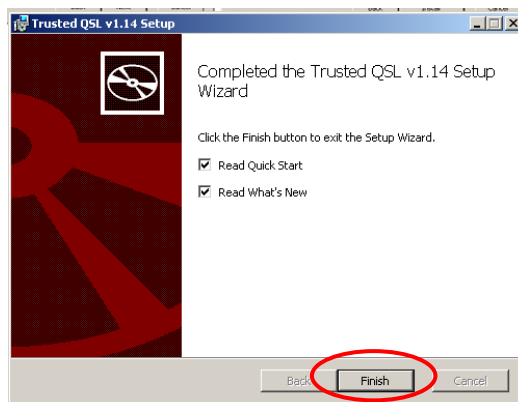
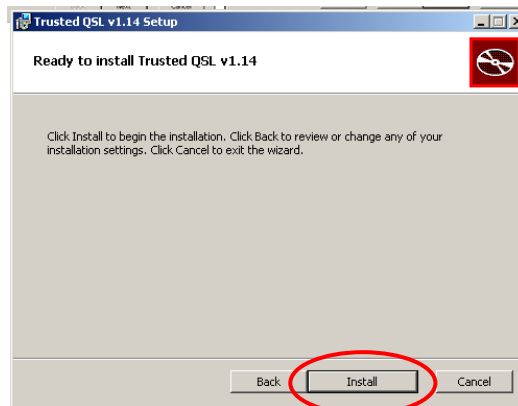
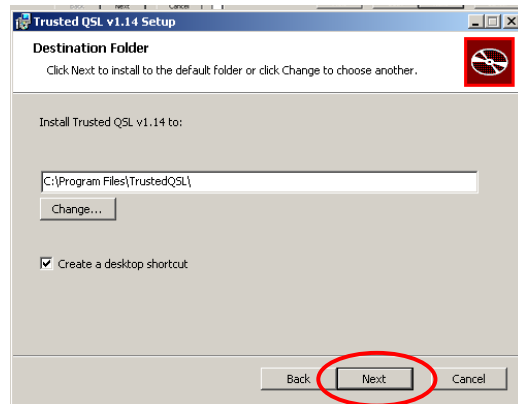
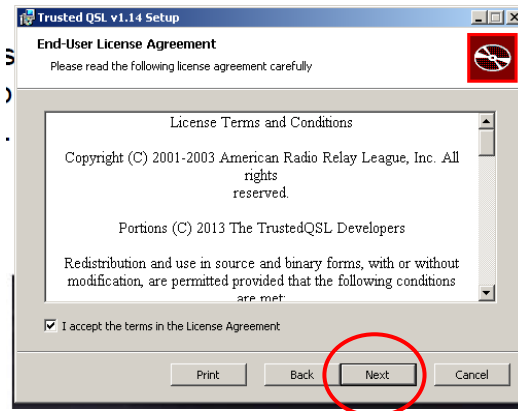
- Linux users can build the software from the [source code](#) for the tqsl.lib library and the Trusted QSL applications. (ARRL does not maintain packages for the plethora of Linux distributions. For assistance with obtaining a packaged version for your Linux distribution, contact your distribution's maintainer.)

2. When given the option select SAVE FILE. Please note where you are saving this file.

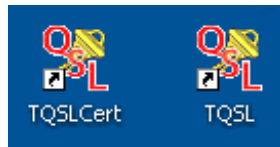


3. Double click the TQSL zip folder from the location where you saved it.
4. Double click the TQSL 114 icon to begin the installation wizard.
If your computer asks for permission to run the program, select RUN.





5. When the installation is complete you will have two program icons on your desktop. These icons are used to open the two programs of the Trusted QSL software package – TQSL and TQSL CERTIFICATES.



You are now ready to begin using TQSL 1.14.

What is new with TQSL 1.14?

Major feature additions:

- Upload log files directly from TrustedQSL! Simply choose "sign and upload" from the File menu and your log will be signed and uploaded automatically with no extra work.
- Automatically check for updates. If a new version is available, you will be periodically prompted to download and install it. You can also check manually.
 - The update-checking and upload web operations now reference the Logbook server directly (eliminating the need for accessing the reverse proxy service) and can follow HTTP redirection.
- Duplicate checking. Any QSOs that have been successfully uploaded to Logbook of the World or saved to a file are registered in a database. Any exact duplicates are automatically stripped from future logs. This can be disabled on a case-by-case basis, in case a log was signed but never uploaded, or there was a server issue that led to an upload going unprocessed.
- TQSL will now ensure that the CQ and ITU zones, and subdivisions if any (US state/county, Canadian province, Russian oblast) are valid with respect to each other. This should reduce the incidence of swapped CQ/ITU zones and in general should help ensure that more accurate location data is uploaded. When an attempt is made to use a location with errors (such as CQ/ITU zones being reversed) the user is notified to correct the errors.
- Installer on Windows is now a Microsoft Windows Installer package, instead of an executable. This will allow for easier and cleaner upgrades.

- Command lines added for programmers.

Minor changes:

- TQSL/TQSLCERT now have window icons
- Double-clicking an entry in the "Choose station location" window for signing now selects it, instead of opening it for editing
- Command line parsing has been rewritten and should be more robust.
- Files to sign and save are now prompted before location and date range
- The build number is now shown in the About box; please include this when asking for help
- The final confirmation before signing includes the signing station location
- Output files on Unix systems are provided with a default .tq8 extension
- The "Edit station location" window title now contains the call sign and station location name
- Station locations can no longer be defined using expired or superseded certificates
- Users are no longer prompted for a password while importing a .p12 file unless the file has a password set
- When importing a certificate, detailed information is provided on the progress of the operation as well as the reason for any errors
- Dozens of bug fixes and potential or real crashes fixed.