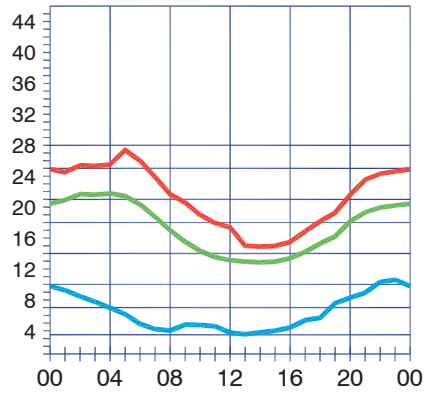
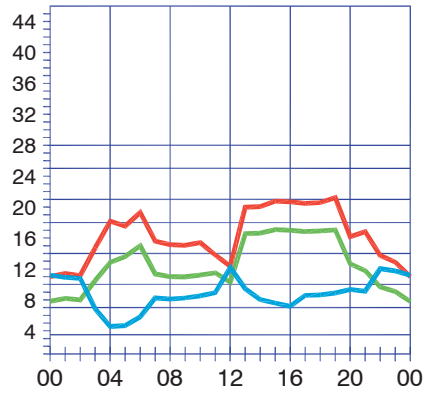


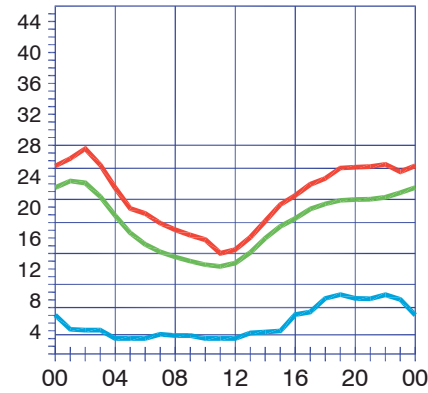
Alaska to Japan



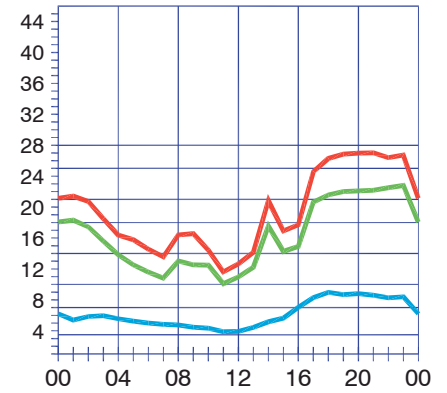
Alaska to Western Europe



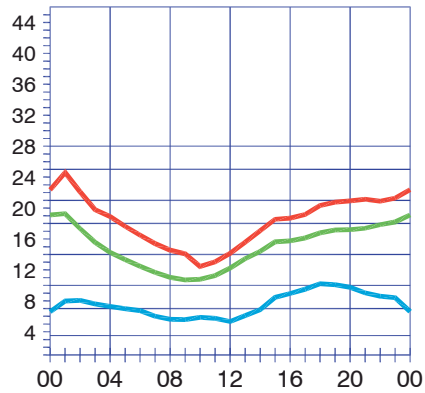
Alaska to West Coast



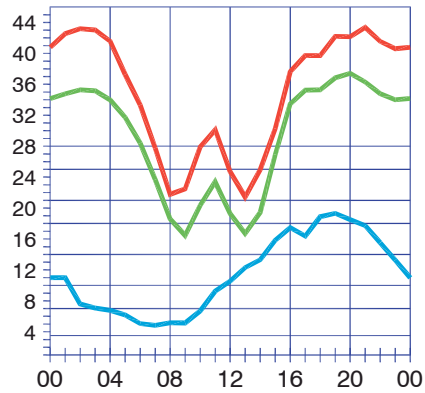
Alaska to Mid-USA



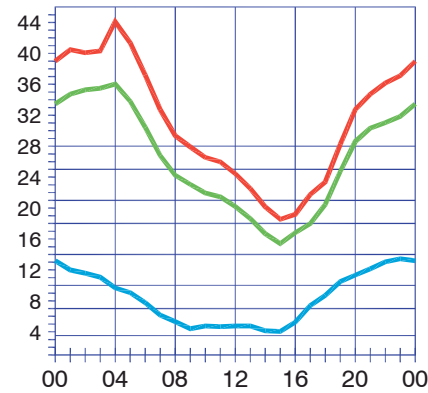
Alaska to East Coast



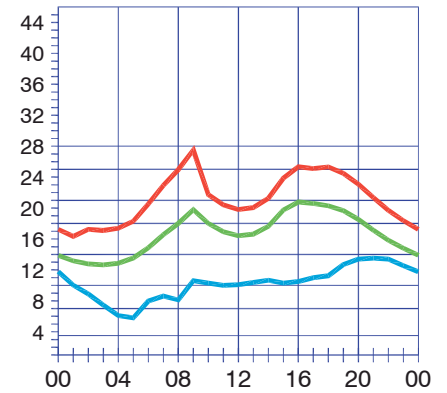
Hawaii to South America



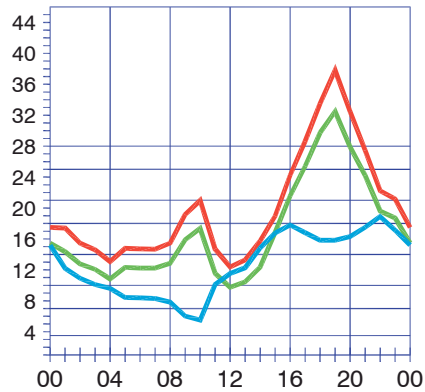
Hawaii to Japan



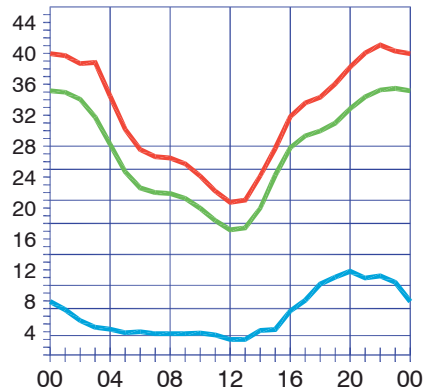
Hawaii to Western Europe



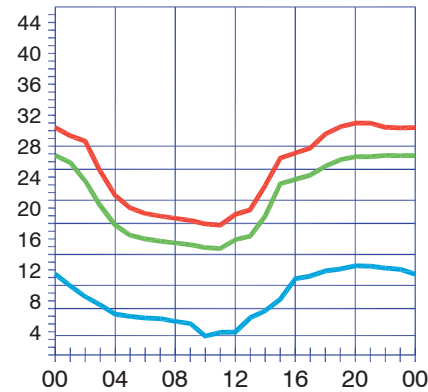
Hawaii to Caribbean



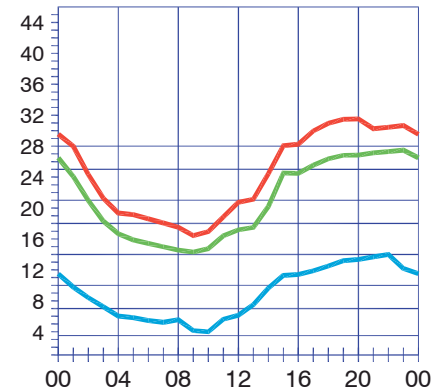
Hawaii to West Coast



Hawaii to Mid-USA



Hawaii to East Coast



When are the bands open? These charts, generated using CAPman, show probabilities for average HF propagation in the month of April for the paths indicated. The horizontal axes show Coordinated Universal Time (UTC), and the vertical axes frequency in MHz. On 10% of the days of this period, the highest frequencies propagated will be at least as high as the upper red curves (HPF, highest possible frequency) and on 50% of the days they will be at least as high as the green curves (MUF, classical maximum usable frequency). The blue curves show the lowest usable frequency (LUF) for a 1500-W CW transmitter. For SSB or a lower transmitter power, the LUF will be somewhat higher than the blue curves indicate. See Oct 1994 *QST*, pp 27-30, and Feb 1995 *QST*, pp 34-36, for more details. The predictions assume an observed 2800-MHz solar flux value of 124. This is a **High** level of solar activity. See the detailed propagation tables on *The ARRL Antenna Book* CD-ROM.