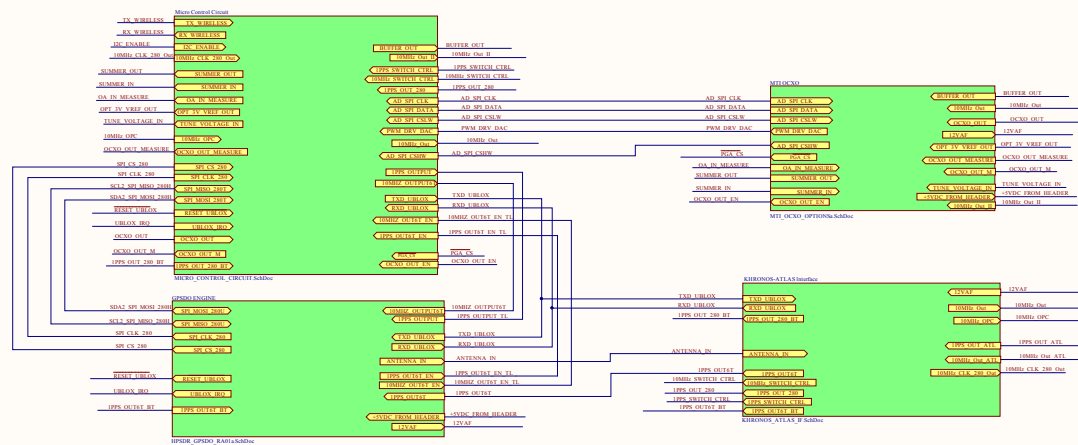


# THEMIS: TOP LEVEL HIERARCHY

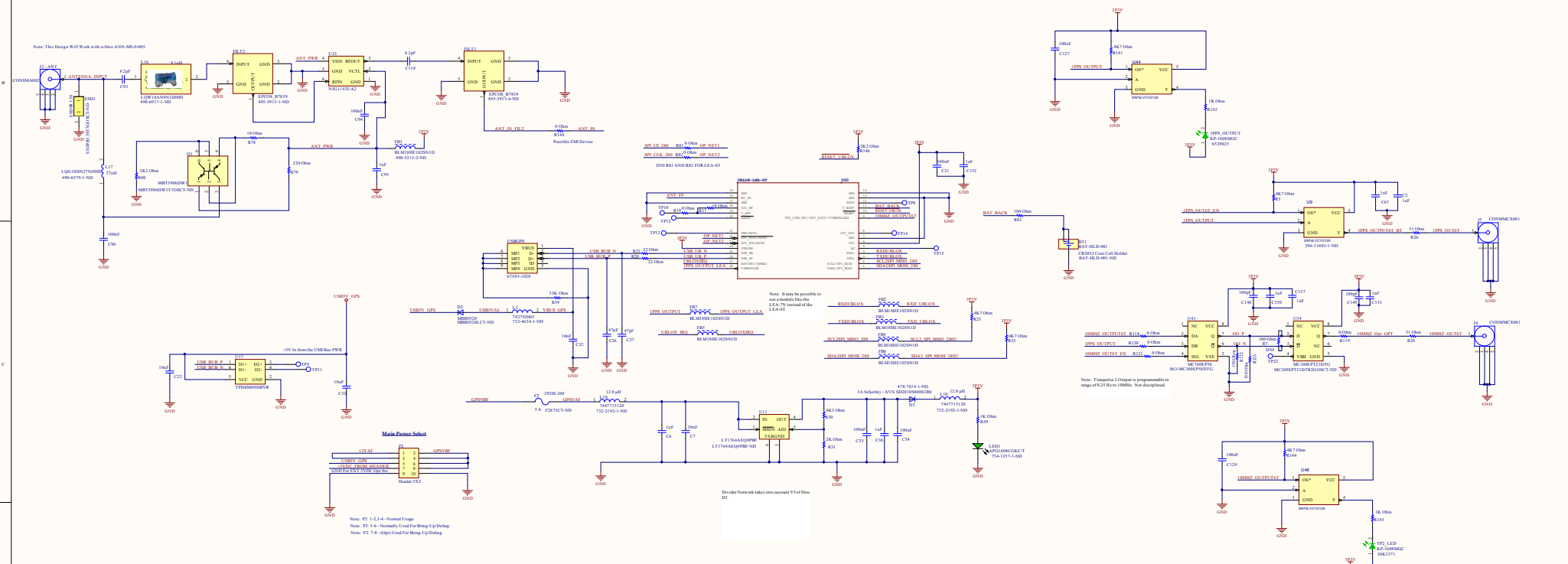


## GPS Module Engine



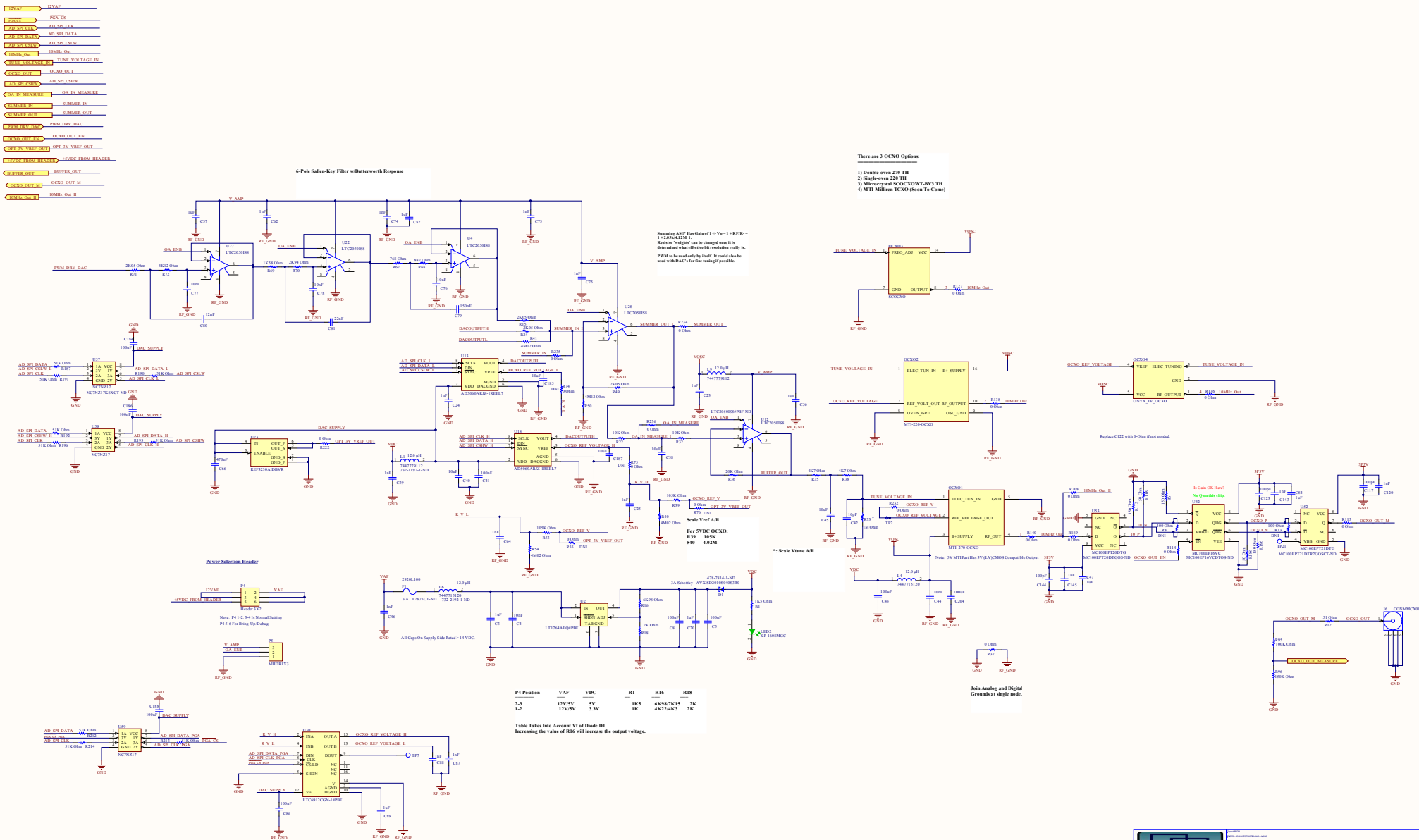
**Note:** Update per a-Blox design review.

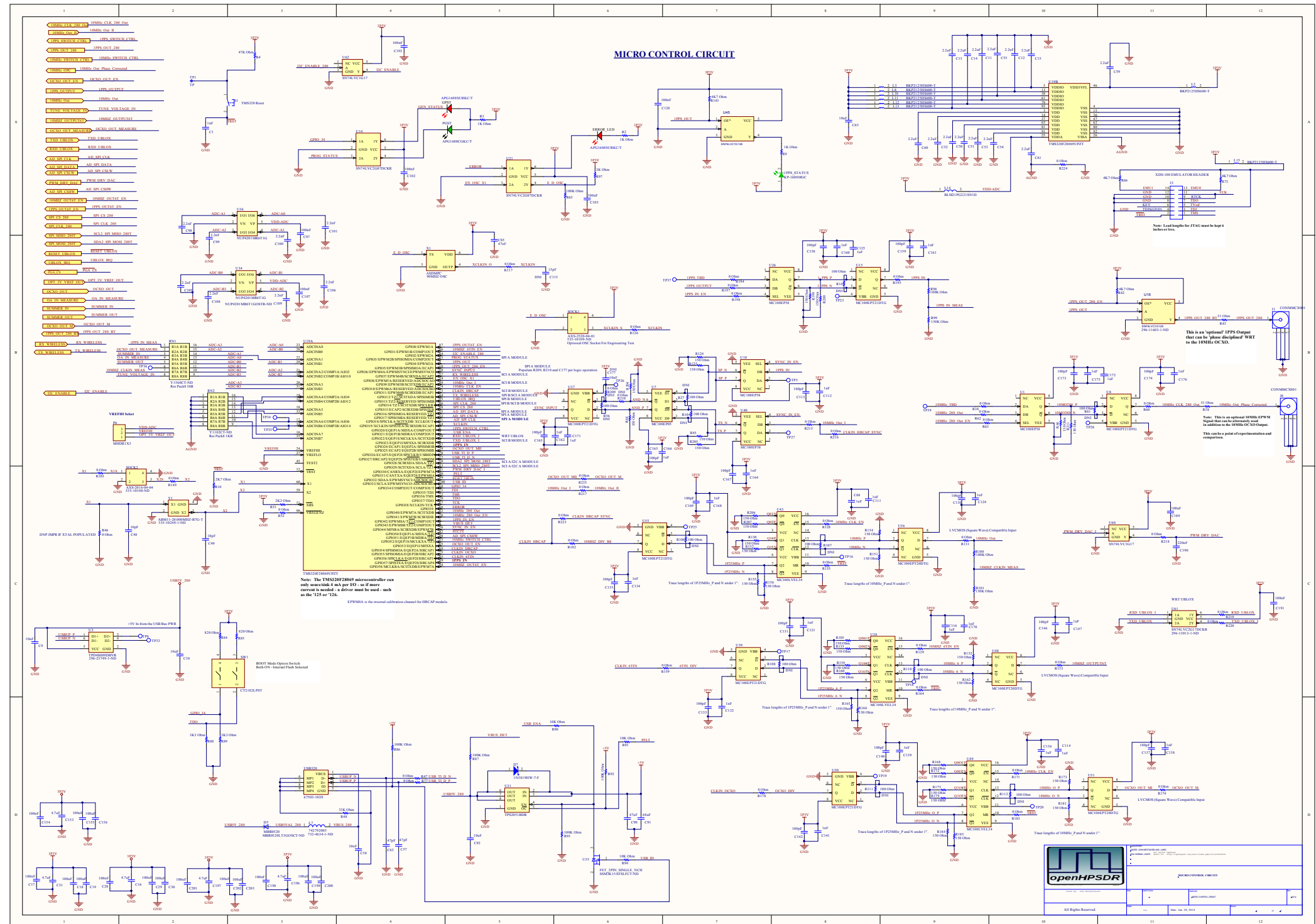
Note: This Design Will Work with a-blox ANN-MS-0-005



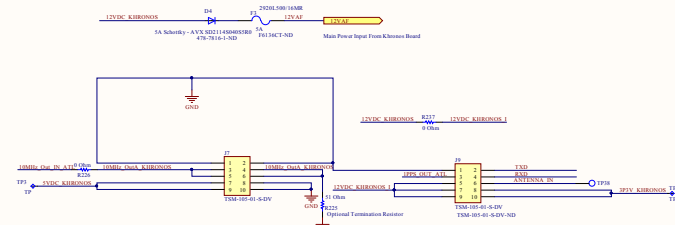
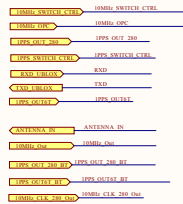
Note: Optionally populate for having LED for TP2 if ~ 1PPS is also desired from TP2



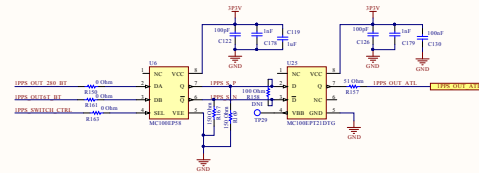
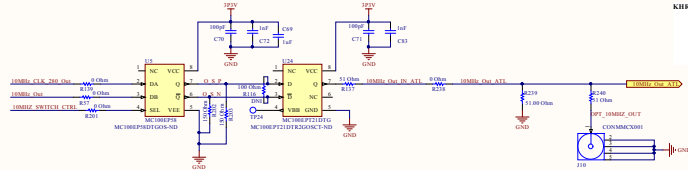
MTI OCXO



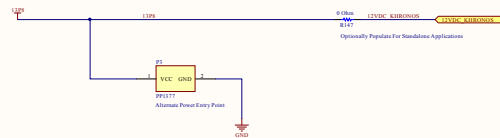
## KHRONOS/ATLAS Interface



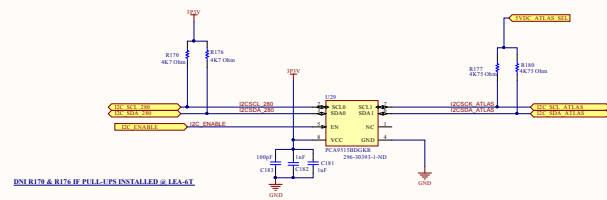
**KHRONOS Interface Connectors**

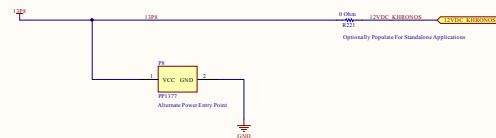
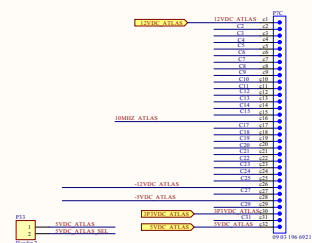


### OPTIONAL POWERPOLE Power Connector

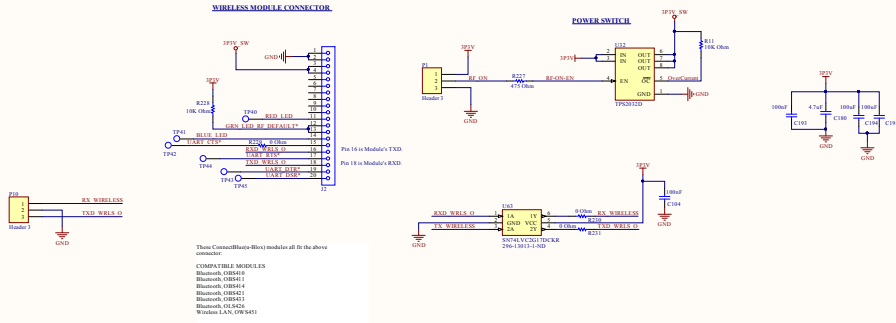
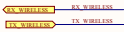


## 5V Tolerant I2C I/F





### Wireless Interface



The above adapter supports all Bluetooth Profiles; Smart, Smart Ready, and Classic. WiFi module is also supported.

