

A HELP FOR COMPUTER MONITOR RFI

◇ Here's a useful tip that I didn't see on the ARRL computer RFI Web page (www.arrl.org/tis/info/rficomp.html). Sometimes it helps to change the refresh rate of the computer monitor. When I rebuilt the computer I use for the shack, I found I had a “new” source of noise in the HF transceiver. The process of elimination pointed an ugly finger at the monitor. Changing

the monitor refresh frequency from 60 Hz to 70 Hz cured the problem.

In the *Windows 2000 Pro* operating system, right click on the desktop, choose **PROPERTIES**. (See Figure 3.) Click the **ADVANCED** button; then click the monitor tab and ensure that there is a check in the box for “Hide modes that this monitor cannot display.” Then (Figure 4) select another **REFRESH FREQUENCY** value. Click the **APPLY** button. Make sure the display is acceptable (Figure 5), and check to see if the EMI is gone (Figure 5). Repeat this process as needed.

When the display quality is okay and the EMI is reduced to an acceptable level, click through **OK** buttons to the desktop (Figure 6). Other *Windows* operating systems use a similar process.—73, *Ed Bruette, N7NVP, Section Manager, WWA*; www.arrl.org/sect/wwa

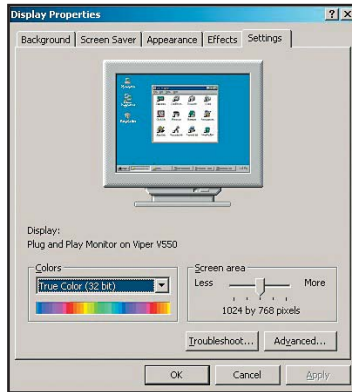


Figure 3—The Windows 2000 Pro screen properties dialog.

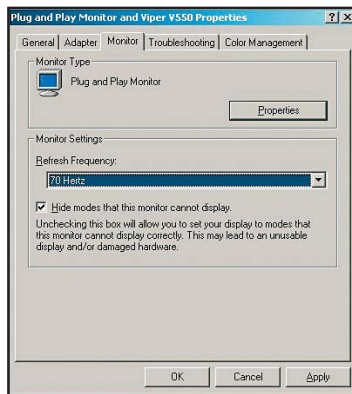


Figure 4—Make sure Windows won't show refresh rates your monitor can't handle.

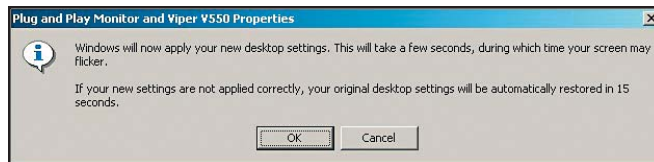


Figure 5—Try a rate and check both screen quality and EMI strength.

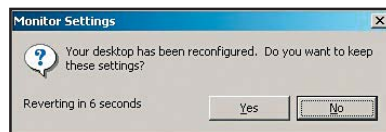


Figure 6—When the problem is cured, work your way out by accepting the changes.